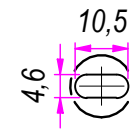
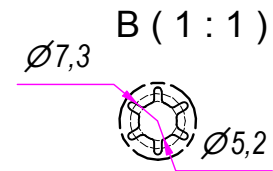
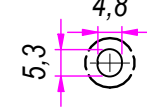


SEZ. A-A

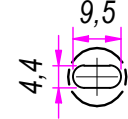
D (1 : 1.5)



E (1 : 1.5)



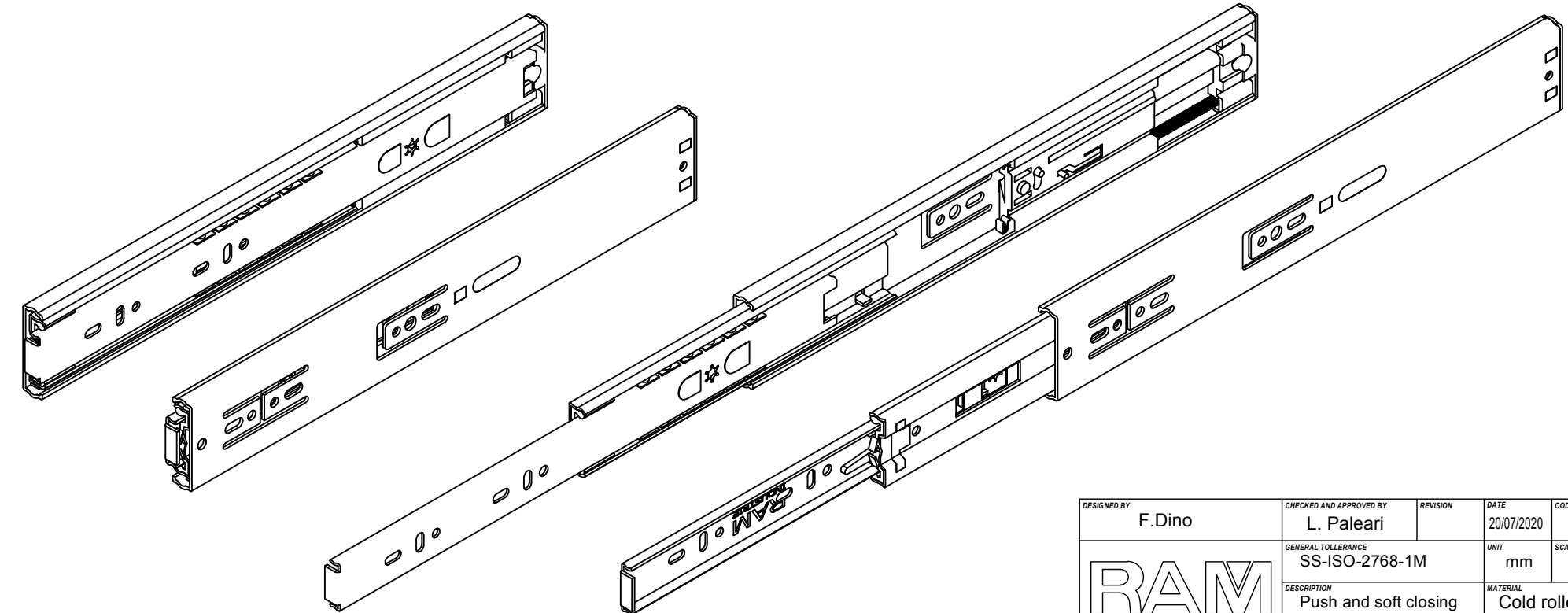
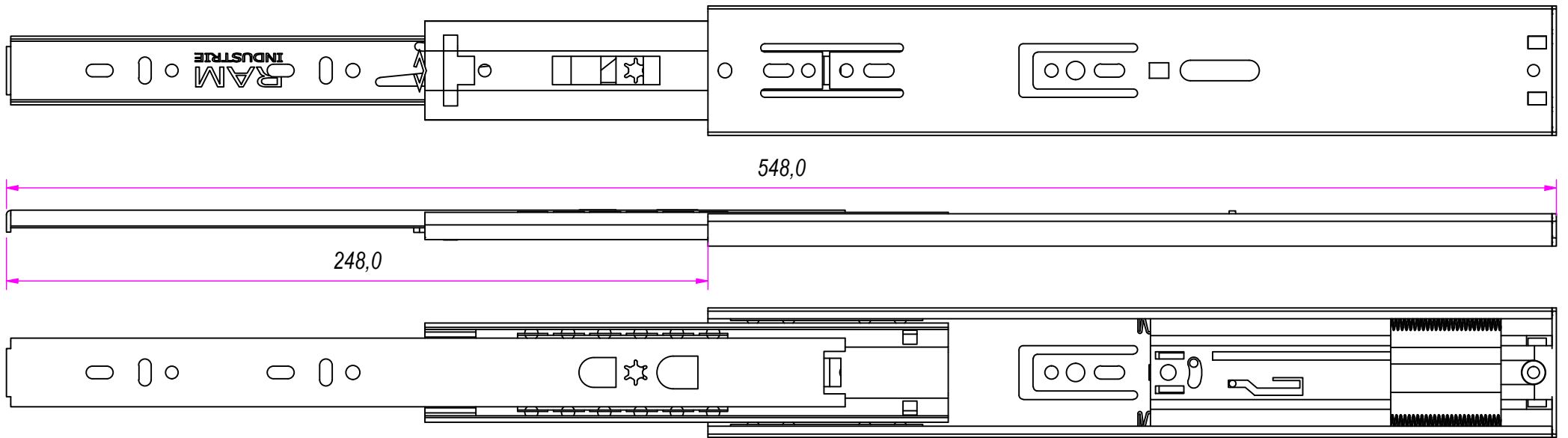
C (1 : 1.5)




REVISION HISTORY			
REV	DESCRIPTION	APPROVED BY	DATE
1		F.Dino	20/07/2020

DESIGNED BY F.Dino	CHECKED AND APPROVED BY L. Paleari	REVISION	DATE 20/07/2020	CODE 23300
GENERAL TOLERANCE SS-ISO-2768-1M			UNIT mm	SCALE SHEET 1 of 2
DESCRIPTION Supplied screws			MATERIAL Cold rolled steel	
DEVICE Push and soft closing			PAIR WEIGHT 0,8 Kg	04C

RAM
INDUSTRIE



REVISION HISTORY			
REV	DESCRIPTION	APPROVED BY	DATE
1		F.Dino	20/07/2020

DESIGNED BY F.Dino	CHECKED AND APPROVED BY L. Paleari	REVISION	DATE 20/07/2020	CODE 23300
		GENERAL TOLLERANCE SS-ISO-2768-1M	UNIT mm	SCALE SHEET 2 of 2
		DESCRIPTION Push and soft closing	MATERIAL Cold rolled steel	
DEVICE Supplied screws		PAIR WEIGHT 0,8 Kg	04C	

Property of RAM Industrie.
Without its written authorization the present drawing shall neither be used for construction anyway, communicated to third parties, nor reproduced.