
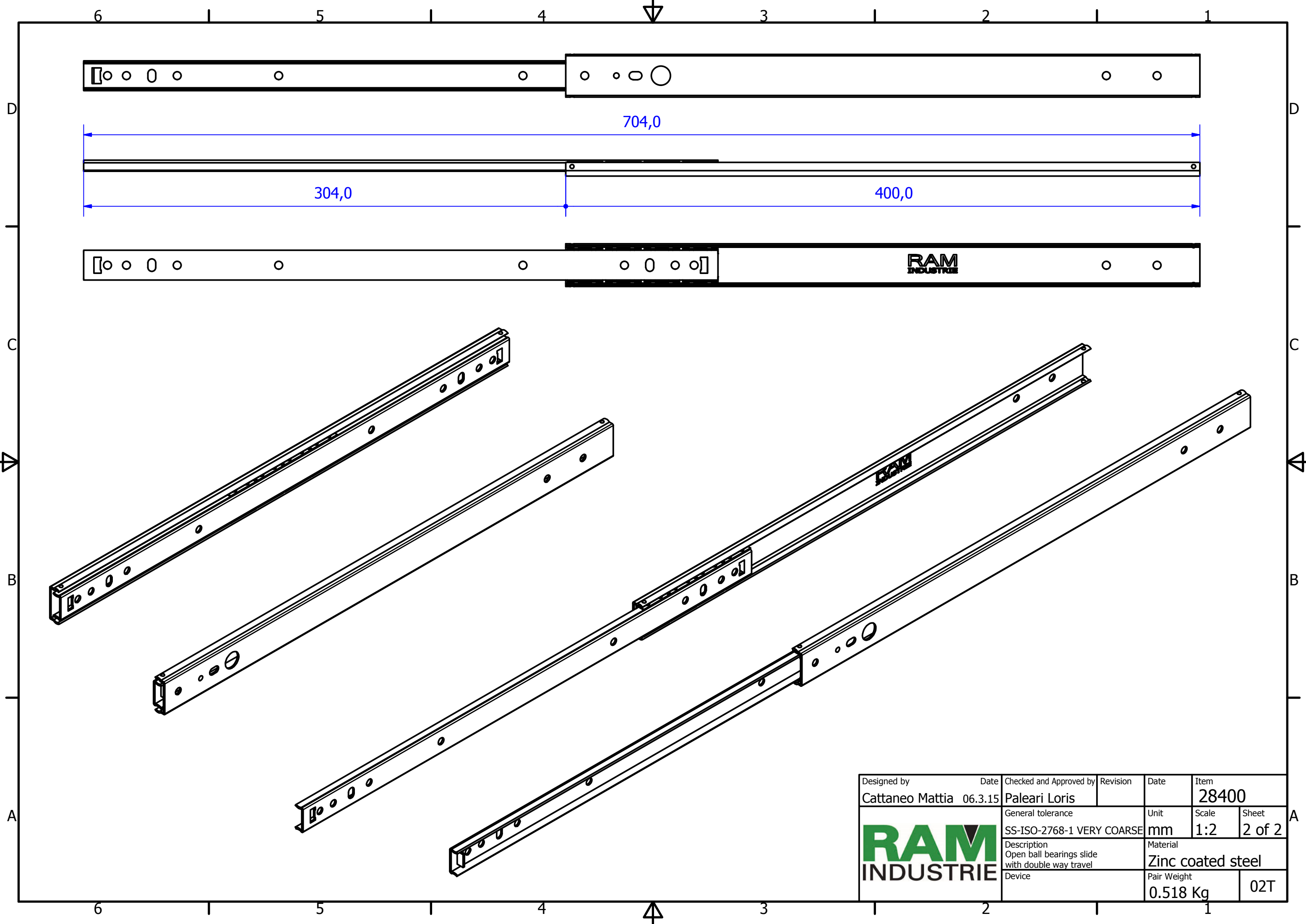



Designed by Cattaneo Mattia	Date 06.3.15	Checked and Approved by Paleari Loris	Revision	Date	Item 28400
			General tolerance SS-ISO-2768-1 MEDIUM	Unit mm	Scale 1:1.25
			Description Closed ball bearings slide with double way travel	Material Zinc coated steel	
Device				Pair Weight 0.518 Kg	02T



Designed by Cattaneo Mattia	Date 06.3.15	Checked and Approved by Paleari Loris	Revision	Date	Item 28400
	General tolerance SS-ISO-2768-1 VERY COARSE		Unit mm	Scale 1:2	Sheet 2 of 2
	Description Open ball bearings slide with double way travel		Material Zinc coated steel		
	Device		Pair Weight 0.518 Kg	02T	