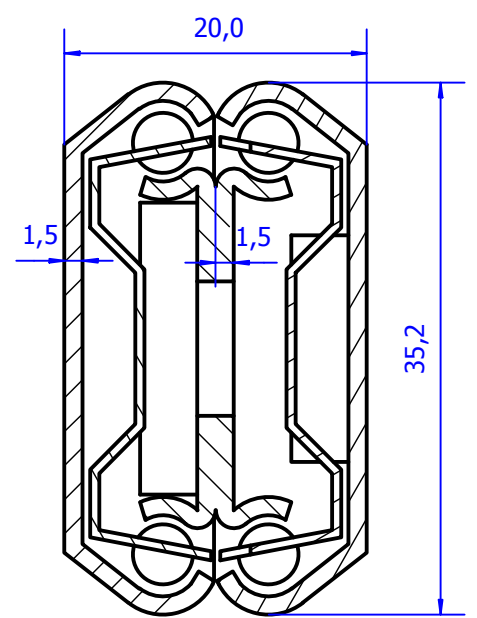
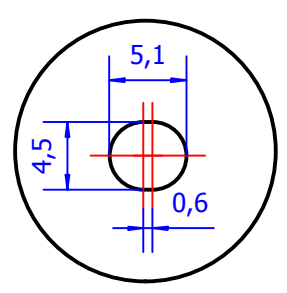


A-A (2 : 1)

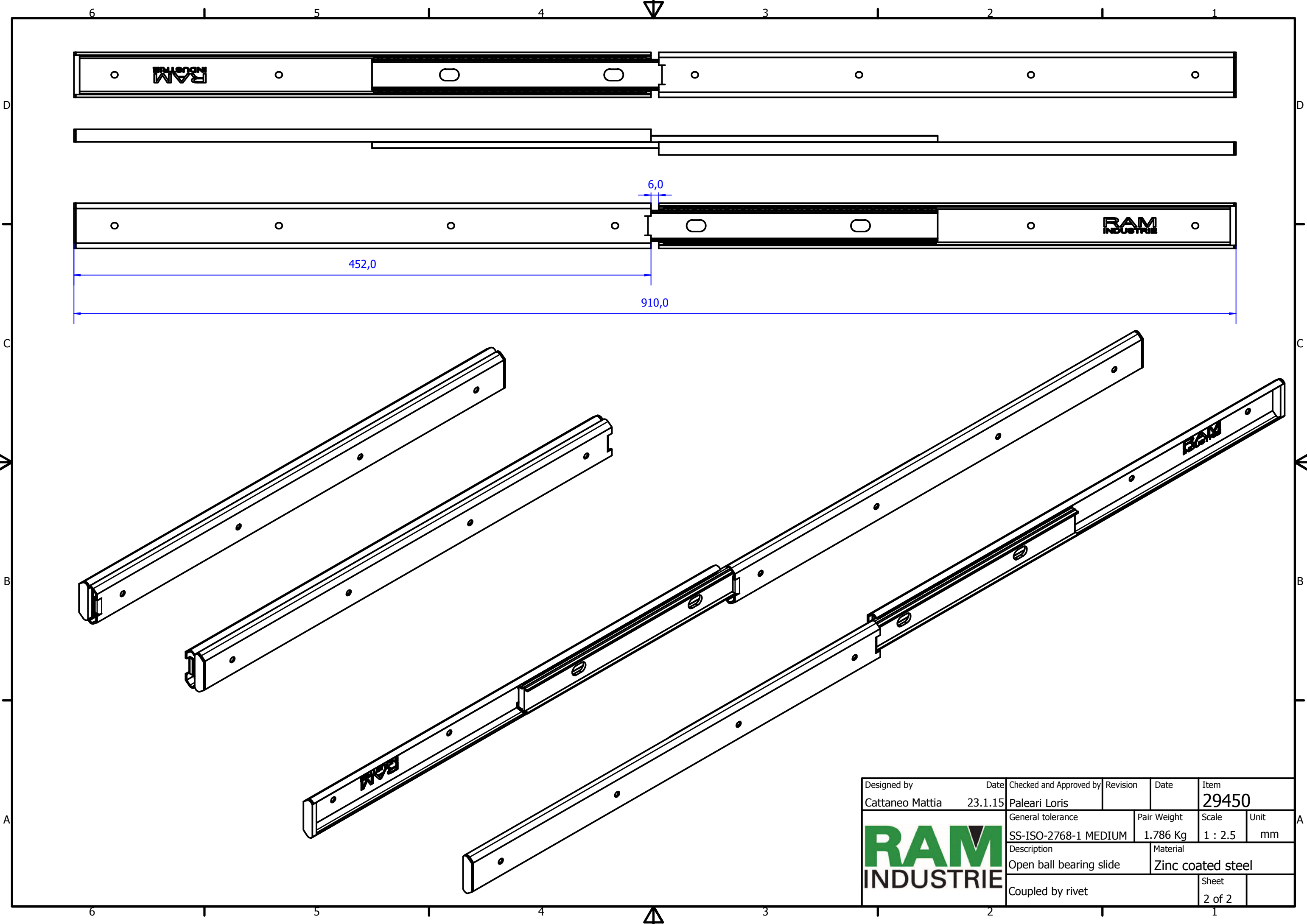


B (2 : 1)



Designed by	Date	Checked and Approved by	Revision	Date	Item
Cattaneo Mattia	23.1.15	Paleari Loris			29450
General tolerance			Pair Weight	Scale	Unit
SS-ISO-2768-1 MEDIUM			1.786 Kg	1 : 1.25	mm
Description				Material	
Closed ball bearing slide				Zinc coated steel	
Coupled by rivet					Sheet
					1 of 2





Designed by	Date	Checked and Approved by	Revision	Date	Item
Cattaneo Mattia	23.1.15	Paleari Loris			29450
General tolerance			Pair Weight	Scale	Unit
SS-ISO-2768-1 MEDIUM			1.786 Kg	1 : 2.5	mm
Description			Material		
Open ball bearing slide			Zinc coated steel		
Coupled by rivet				Sheet	
				2 of 2	

