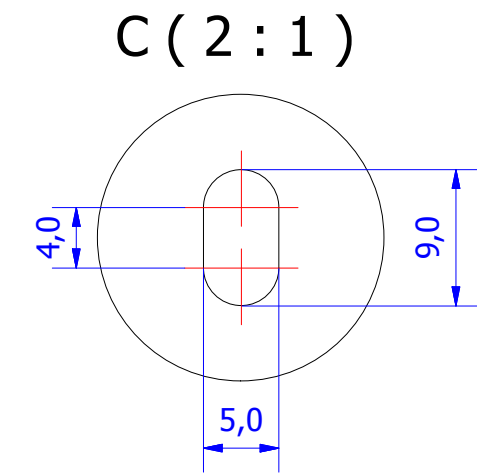
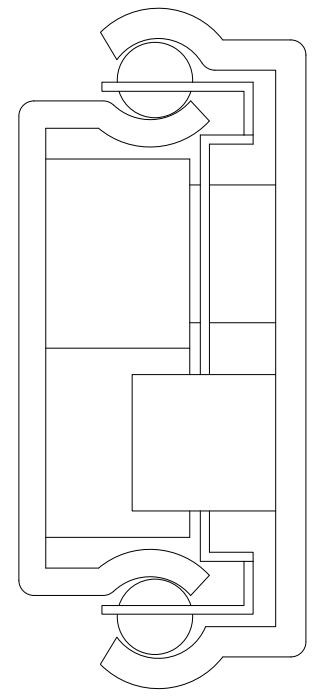
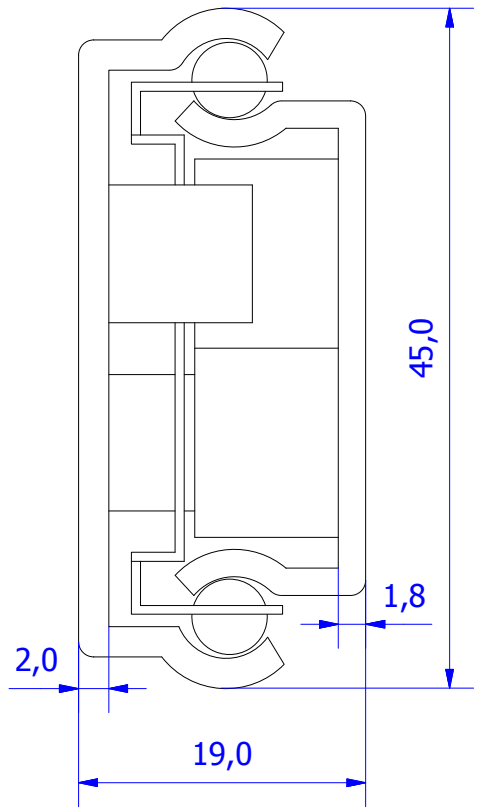

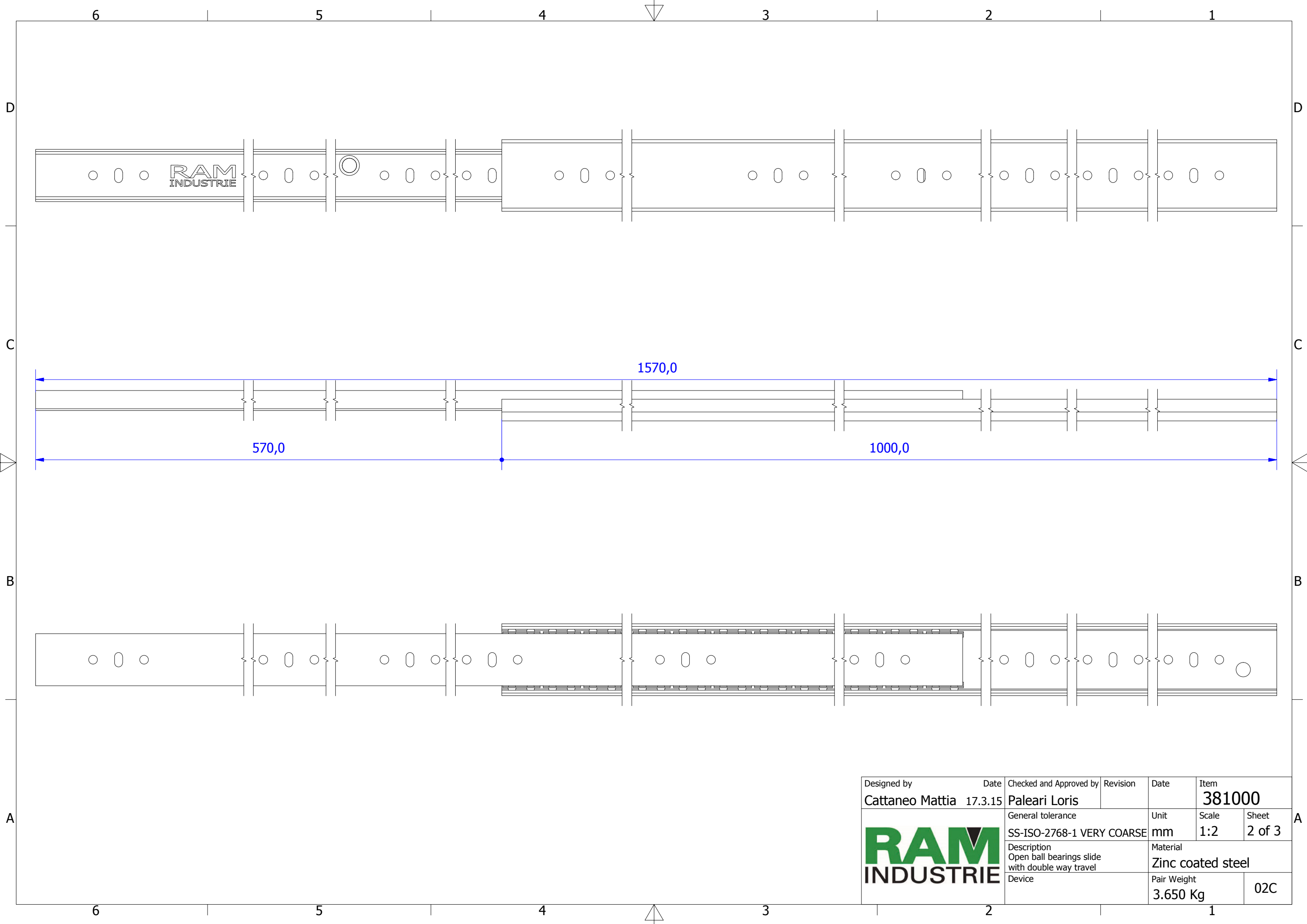



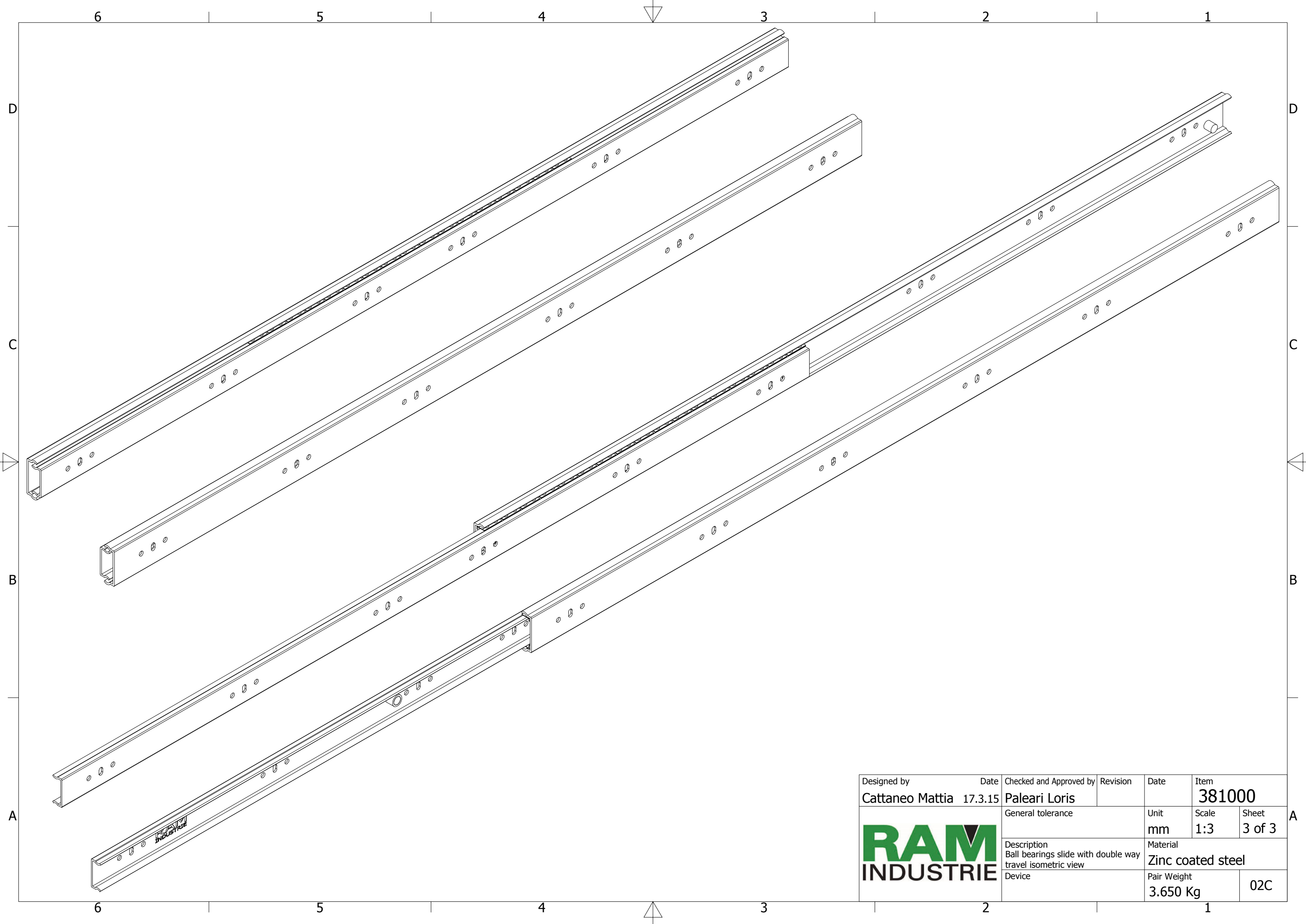
Cage with 34 ball bearings pairs




Designed by Cattaneo Mattia	Date 17.3.15	Checked and Approved by Paleari Loris	Revision	Date	Item 381000
			General tolerance SS-ISO-2768-1 MEDIUM	Unit mm	Scale 1:1.5
			Description Closed ball bearings slide with double way travel	Material Zinc coated steel	
Device				Pair Weight 3.650 Kg	02C



Designed by Cattaneo Mattia	Date 17.3.15	Checked and Approved by Paleari Loris	Revision	Date	Item 381000
	General tolerance SS-ISO-2768-1 VERY COARSE		Unit mm	Scale 1:2	Sheet 2 of 3
	Description Open ball bearings slide with double way travel			Material Zinc coated steel	
	Device			Pair Weight 3.650 Kg	02C



Designed by Cattaneo Mattia	Date 17.3.15	Checked and Approved by Paleari Loris	Revision	Date	Item 381000
			General tolerance		Unit mm
			Description Ball bearings slide with double way travel isometric view		Scale 1:3
Device			Material Zinc coated steel		Pair Weight 3.650 Kg
				02C	