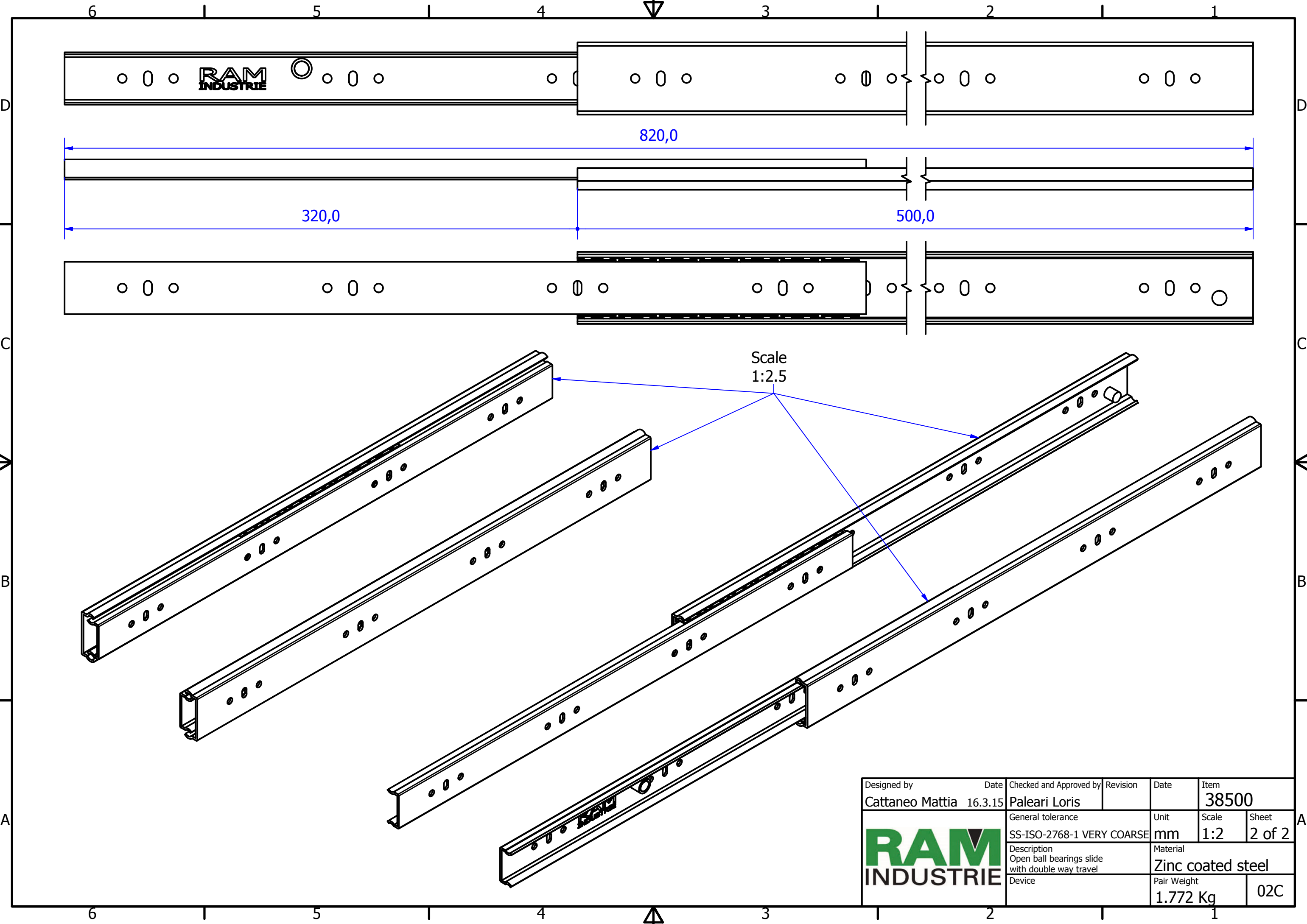



Designed by Cattaneo Mattia	Date 16.3.15	Checked and Approved by Paleari Loris	Revision	Date	Item 38500
General tolerance SS-ISO-2768-1 MEDIUM			Unit mm	Scale 1:1.5	Sheet 1 of 2
Description Closed ball bearings slide with double way travel			Material Zinc coated steel		
Device				Pair Weight 1.772 Kg	02C





Scale
1:2.5

Designed by Cattaneo Mattia	Date 16.3.15	Checked and Approved by Paleari Loris	Revision	Date	Item 38500
		General tolerance SS-ISO-2768-1 VERY COARSE	Unit mm	Scale 1:2	Sheet 2 of 2
		Description Open ball bearings slide with double way travel	Material Zinc coated steel		
Device			Pair Weight 1.772 Kg	02C	