
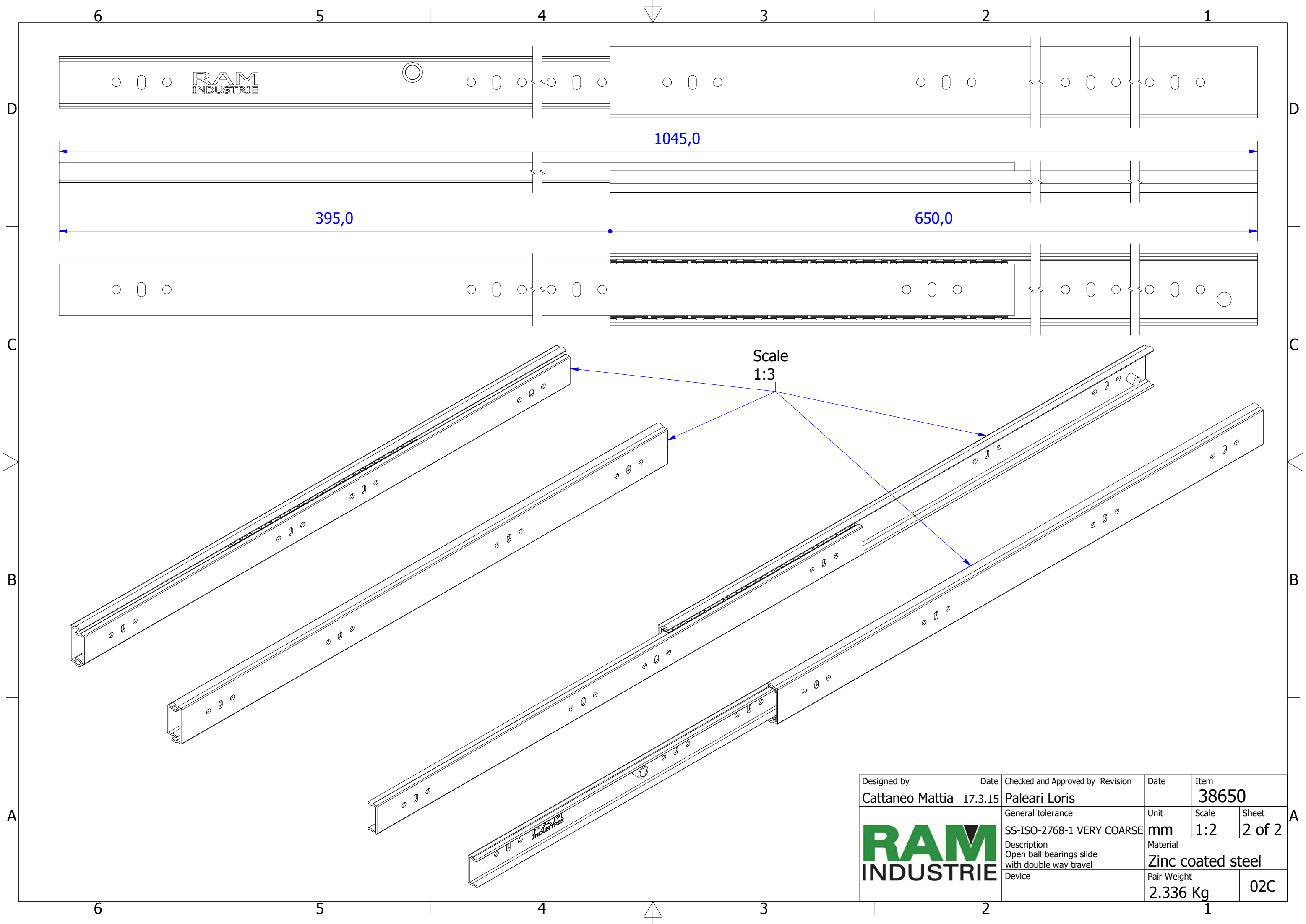


Designed by Cattaneo Mattia	Date 17.3.15	Checked and Approved by Paleari Loris	Revision	Date	Item 38650
		General tolerance SS-ISO-2768-1 MEDIUM	Unit mm	Scale 1:1.5	Sheet 1 of 2
		Description Closed ball bearings slide with double way travel	Material Zinc coated steel		
Device				Pair Weight 2.336 Kg	02C



Designed by	Date	Checked and Approved by	Revision	Date	Item
Cattaneo Mattia	17.3.15	Paleari Loris			38650
General tolerance			Unit	Scale	Sheet
SS-ISO-2768-1 VERY COARSE			mm	1:2	2 of 2
Description			Material		
Open ball bearings slide with double way travel			Zinc coated steel		
Device			Pair Weight	02C	
			2.336 Kg		

