
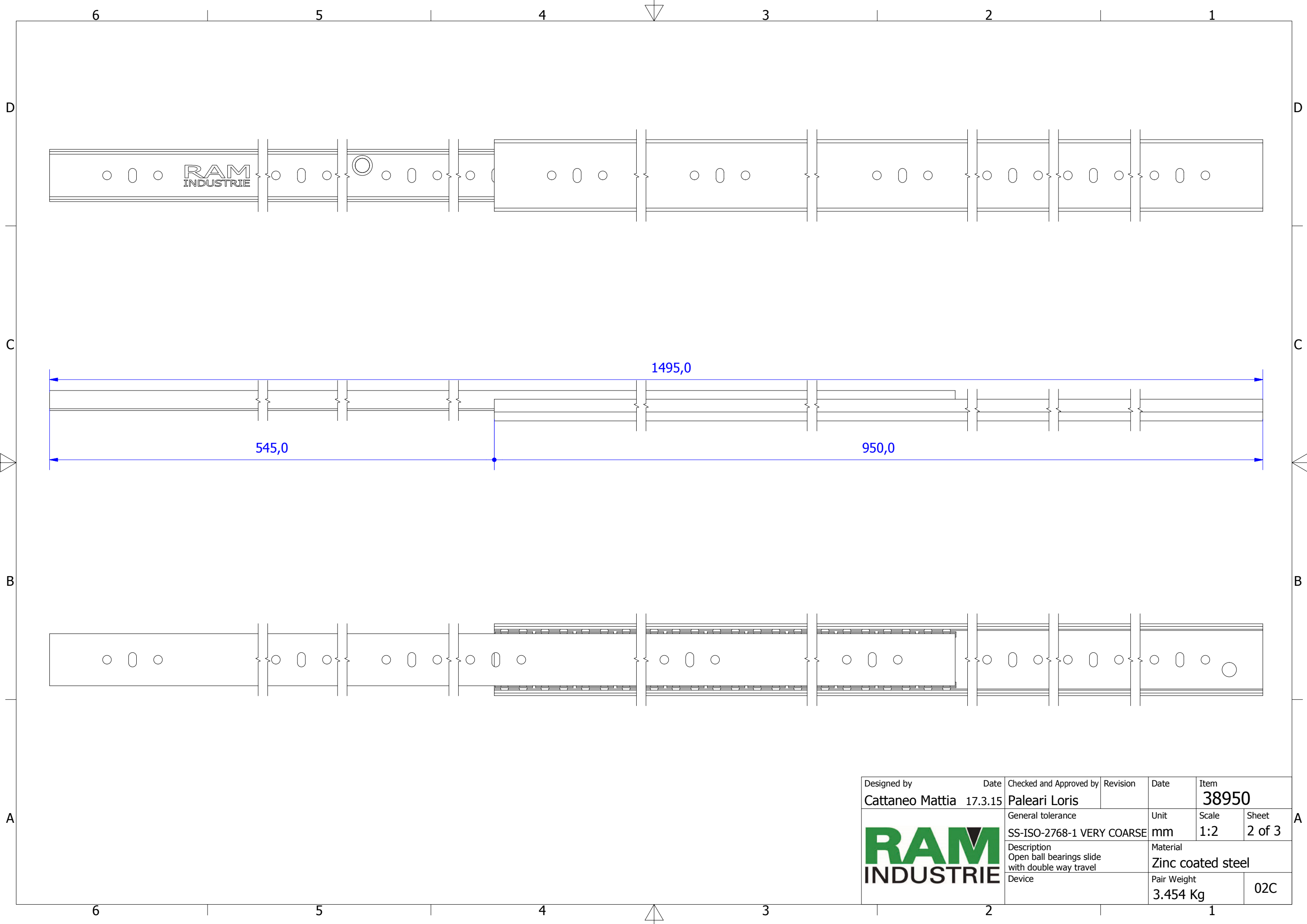

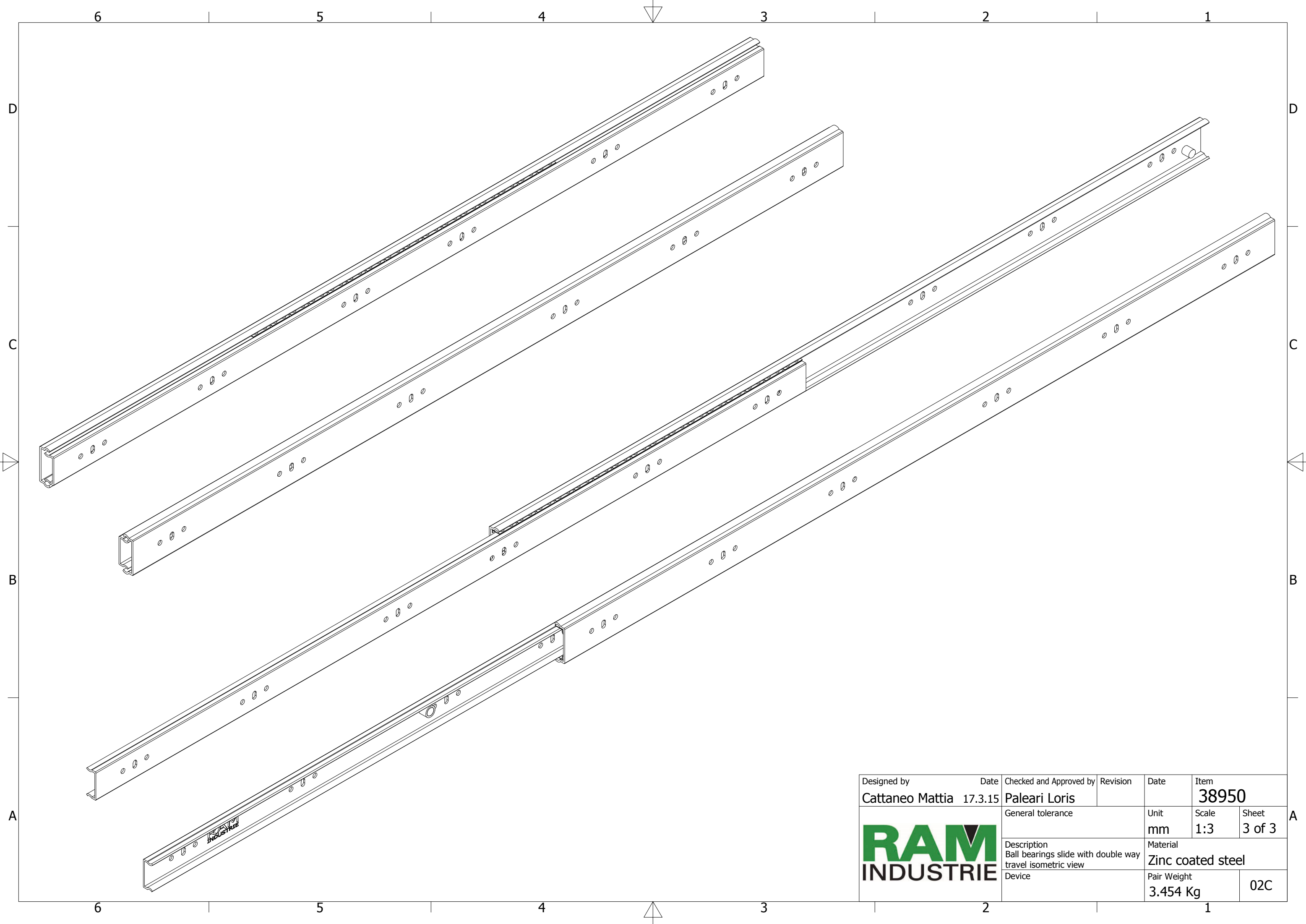



Designed by Cattaneo Mattia	Date 17.3.15	Checked and Approved by Paleari Loris	Revision	Date	Item 38950
		General tolerance SS-ISO-2768-1 MEDIUM	Unit mm	Scale 1:1.5	Sheet 1 of 3
		Description Closed ball bearings slide with double way travel		Material Zinc coated steel	
		Device		Pair Weight 3.454 Kg	02C



Designed by Cattaneo Mattia	Date 17.3.15	Checked and Approved by Paleari Loris	Revision	Date	Item 38950
	General tolerance SS-ISO-2768-1 VERY COARSE		Unit mm	Scale 1:2	Sheet 2 of 3
	Description Open ball bearings slide with double way travel			Material Zinc coated steel	
	Device			Pair Weight 3.454 Kg	02C



Designed by Cattaneo Mattia	Date 17.3.15	Checked and Approved by Paleari Loris	Revision	Date	Item 38950
			General tolerance		Unit mm
			Description Ball bearings slide with double way travel isometric view		Scale 1:3
Device				Material Zinc coated steel	
				Pair Weight 3.454 Kg	
				02C	