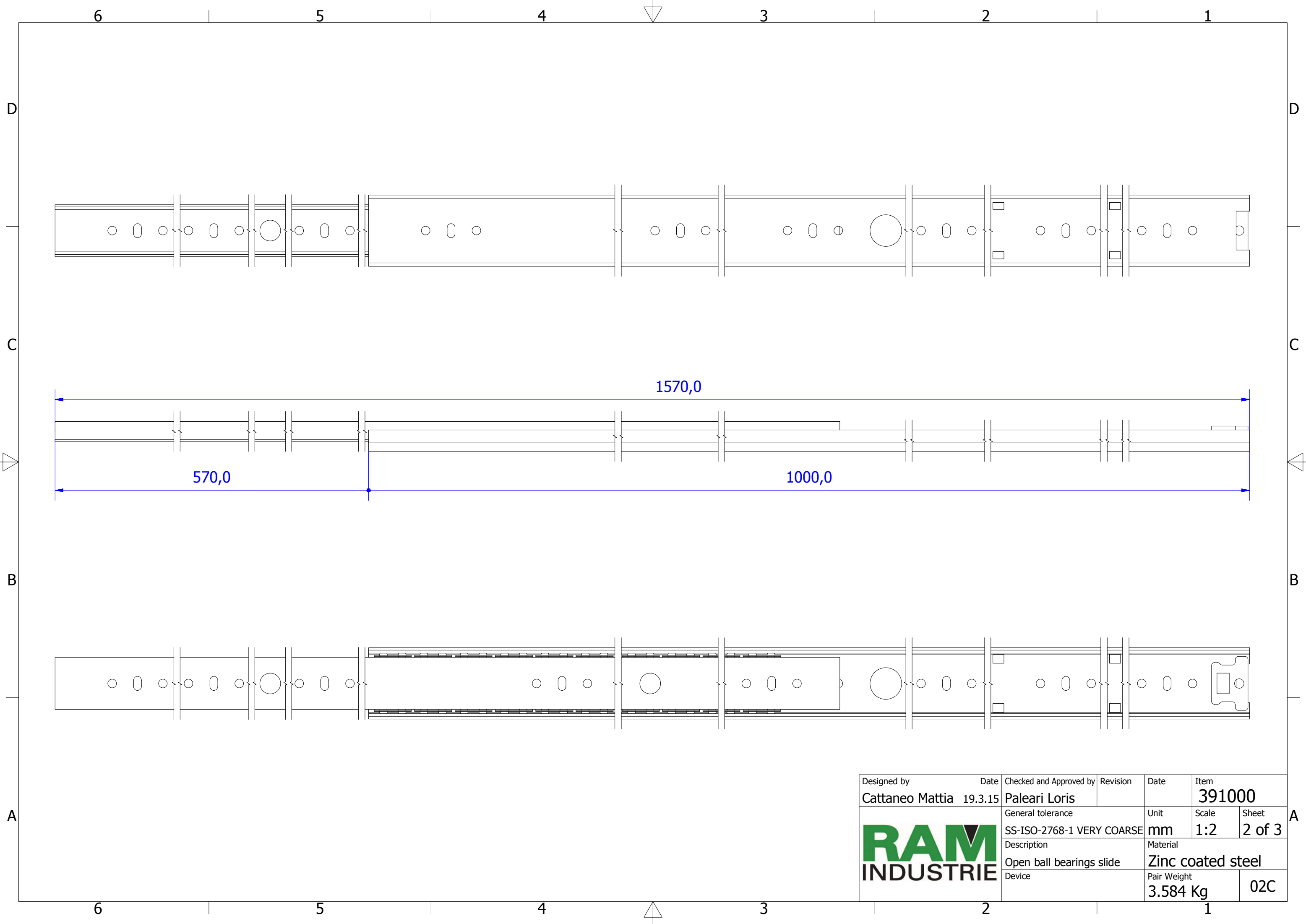

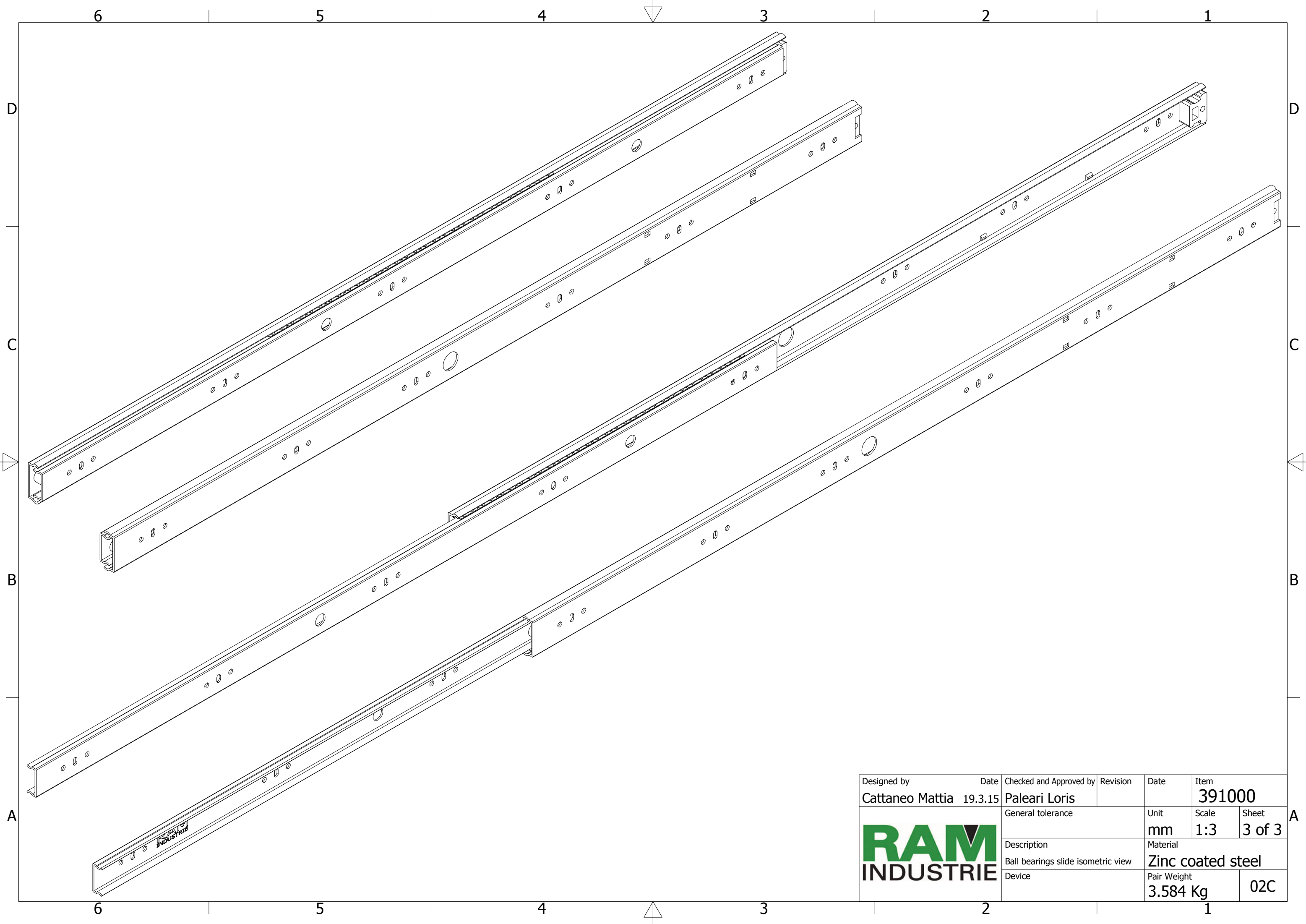



Designed by	Date	Checked and Approved by	Revision	Date	Item
Cattaneo Mattia	19.3.15	Paleari Loris			391000
General tolerance			Unit	Scale	Sheet
SS-ISO-2768-1 MEDIUM			mm	1:1.5	1 of 3
Description			Material		
Closed ball bearings slide			Zinc coated steel		
Device			Pair Weight		
			3.584 Kg	02C	





Designed by	Date	Checked and Approved by	Revision	Date	Item
Cattaneo Mattia	19.3.15	Paleari Loris			391000
	General tolerance		Unit	Scale	Sheet
	SS-ISO-2768-1 VERY COARSE		mm	1:2	2 of 3
	Description		Material		
Open ball bearings slide		Zinc coated steel			
Device		Pair Weight			
		3.584 Kg		02C	



Designed by Cattaneo Mattia	Date 19.3.15	Checked and Approved by Paleari Loris	Revision	Date	Item 391000
			General tolerance		Unit mm
			Description Ball bearings slide isometric view		Scale 1:3
Device				Material Zinc coated steel	
				Pair Weight 3.584 Kg	
				02C	