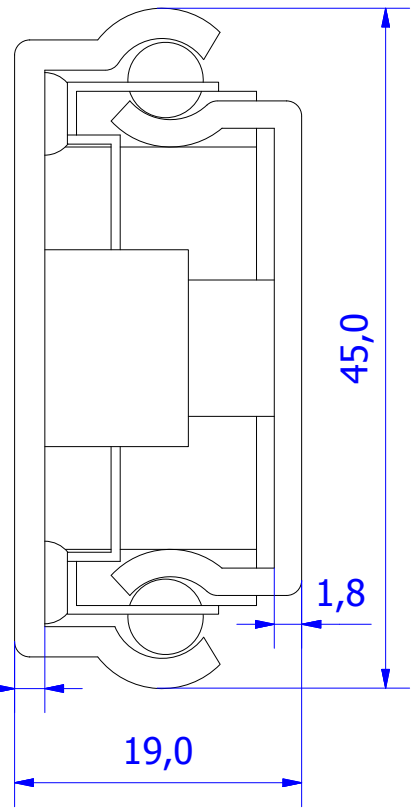
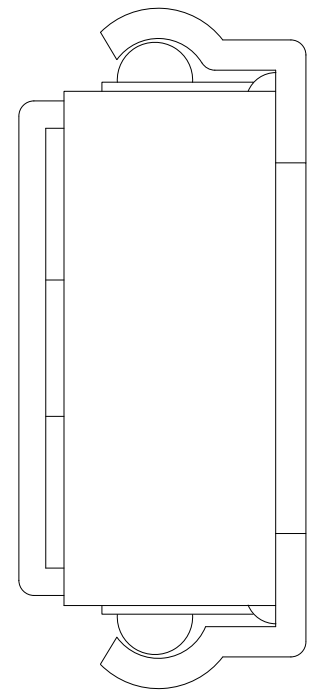


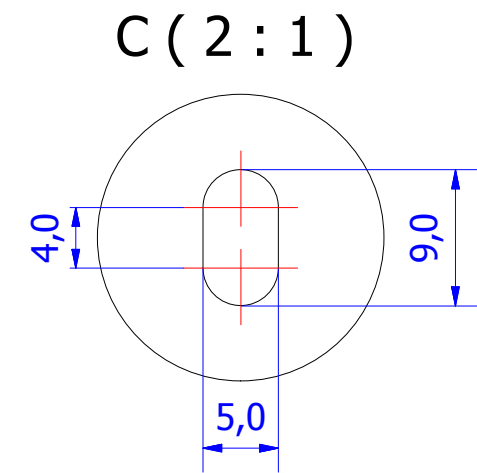
Cage with 18 ball bearings pairs




A ( 2 : 1 )

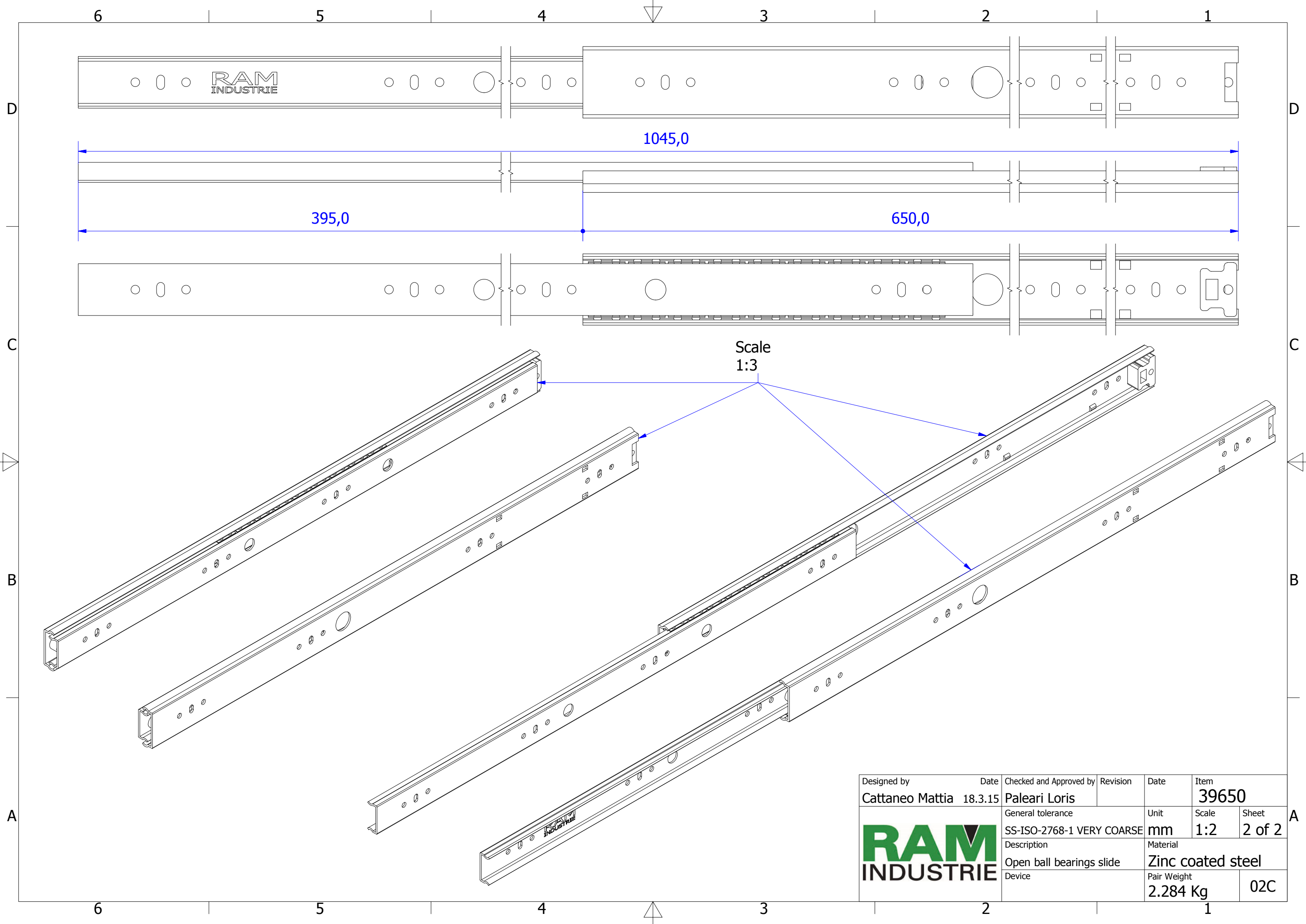


B ( 2 : 1 )



C ( 2 : 1 )

Designed by <b>Cattaneo Mattia</b>	Date 18.3.15	Checked and Approved by <b>Paleari Loris</b>	Revision	Date	Item <b>39650</b>
		General tolerance SS-ISO-2768-1 MEDIUM	Unit mm	Scale 1:1.5	Sheet 1 of 2
		Description Closed ball bearings slide	Material Zinc coated steel		
		Device	Pair Weight 2.284 Kg	02C	



Scale  
1:3

Designed by	Date	Checked and Approved by	Revision	Date	Item
Cattaneo Mattia	18.3.15	Paleari Loris			39650
General tolerance			Unit	Scale	Sheet
SS-ISO-2768-1 VERY COARSE			mm	1:2	2 of 2
Description			Material		
Open ball bearings slide			Zinc coated steel		
Device			Pair Weight	02C	
			2.284 Kg		

