


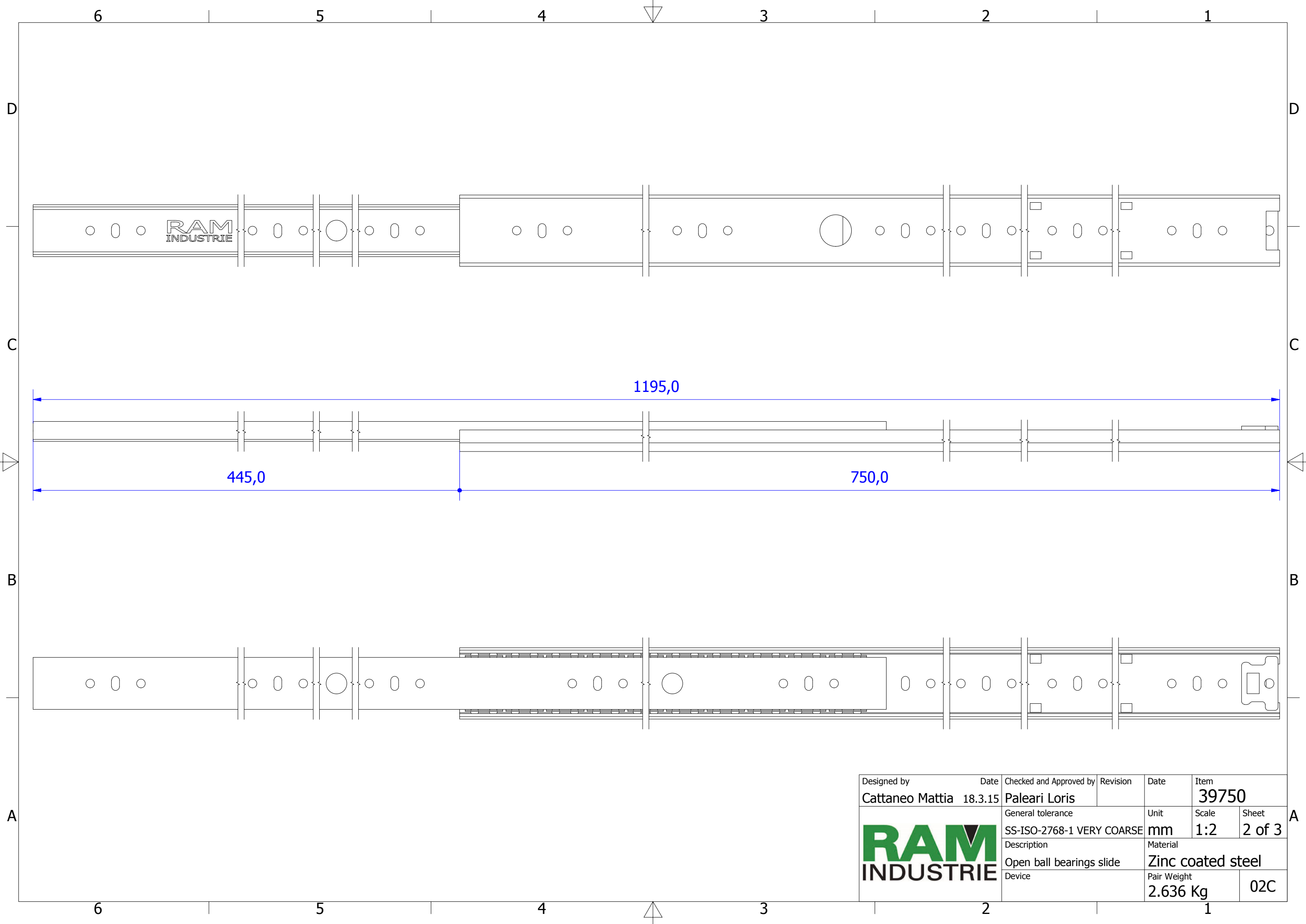
Cage with 22 ball bearings pairs

A (2 : 1)


B (2 : 1)

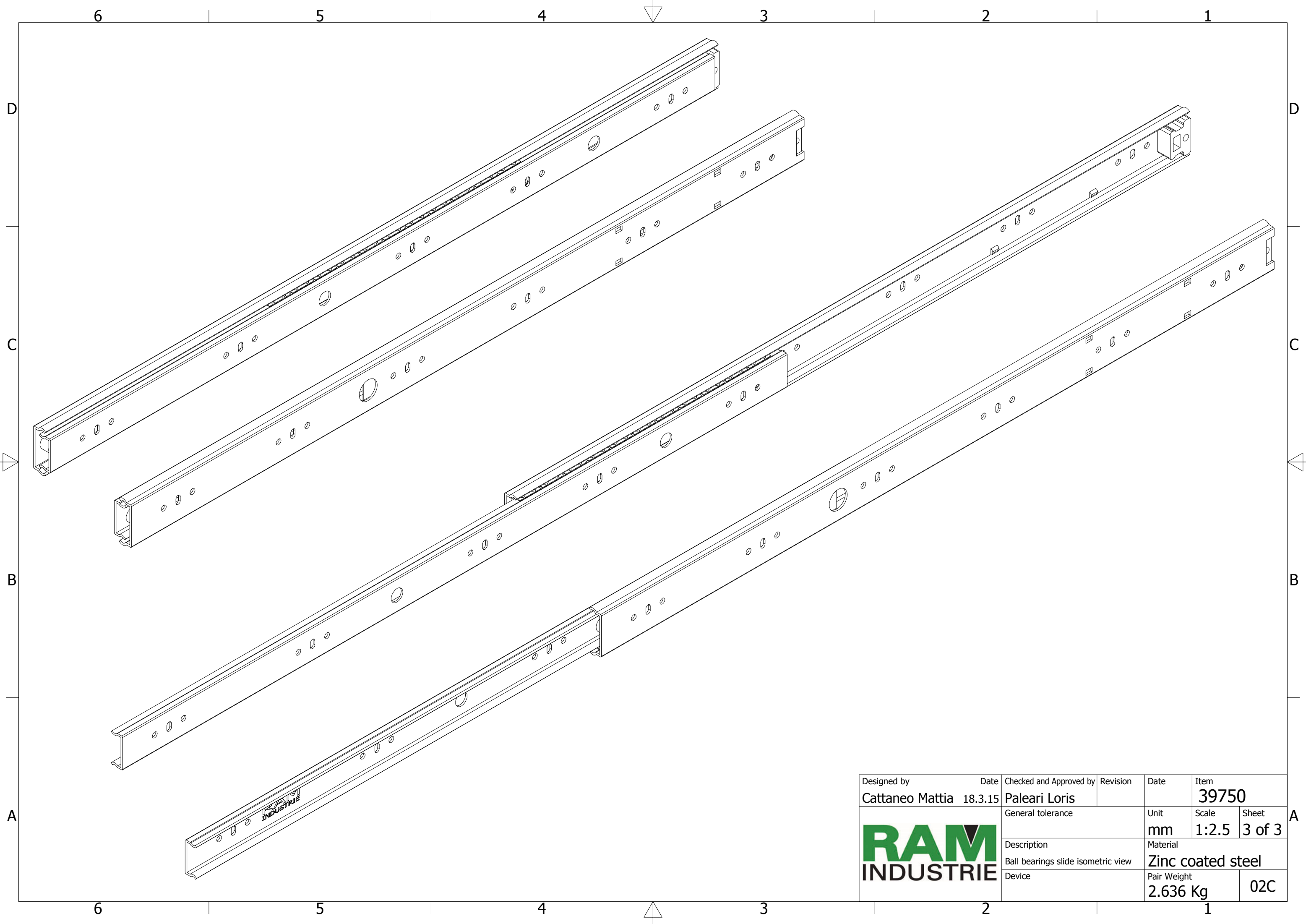
C (2 : 1)


Designed by Cattaneo Mattia	Date 18.3.15	Checked and Approved by Paleari Loris	Revision	Date	Item 39750
		General tolerance SS-ISO-2768-1 MEDIUM	Unit mm	Scale 1:1.5	Sheet 1 of 3
		Description Closed ball bearings slide	Material Zinc coated steel		
		Device	Pair Weight 2.636 Kg	02C	



RAM
INDUSTRIE

Designed by	Date	Checked and Approved by	Revision	Date	Item
Cattaneo Mattia	18.3.15	Paleari Loris			39750
	General tolerance		Unit	Scale	Sheet
	SS-ISO-2768-1 VERY COARSE		mm	1:2	2 of 3
	Description		Material		
	Open ball bearings slide		Zinc coated steel		
Device		Pair Weight			
		2.636 Kg		02C	



Designed by Cattaneo Mattia	Date 18.3.15	Checked and Approved by Paleari Loris	Revision	Date	Item 39750
			General tolerance		Unit mm
			Description Ball bearings slide isometric view		Scale 1:2.5
Device				Material Zinc coated steel	Pair Weight 2.636 Kg
					02C