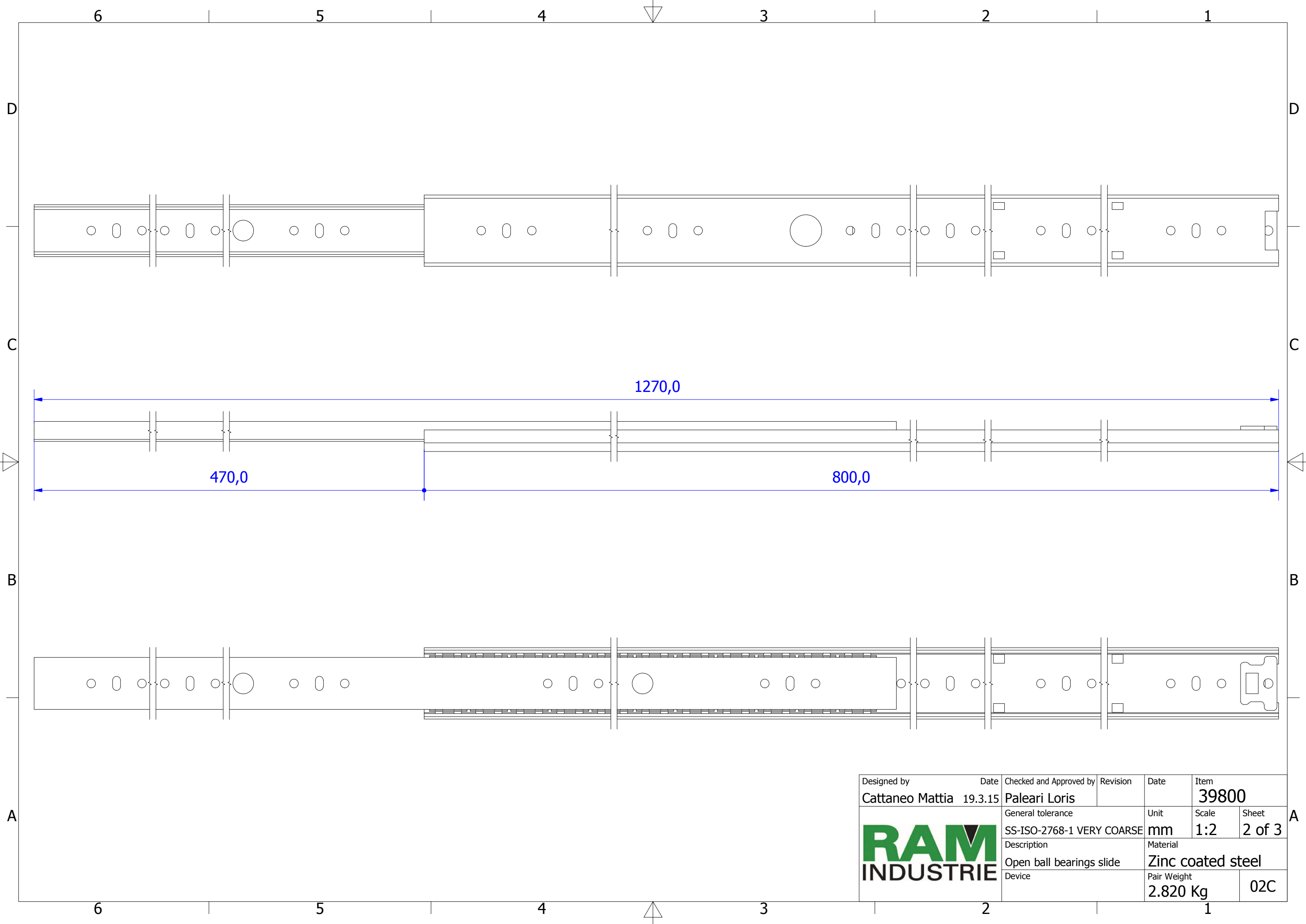

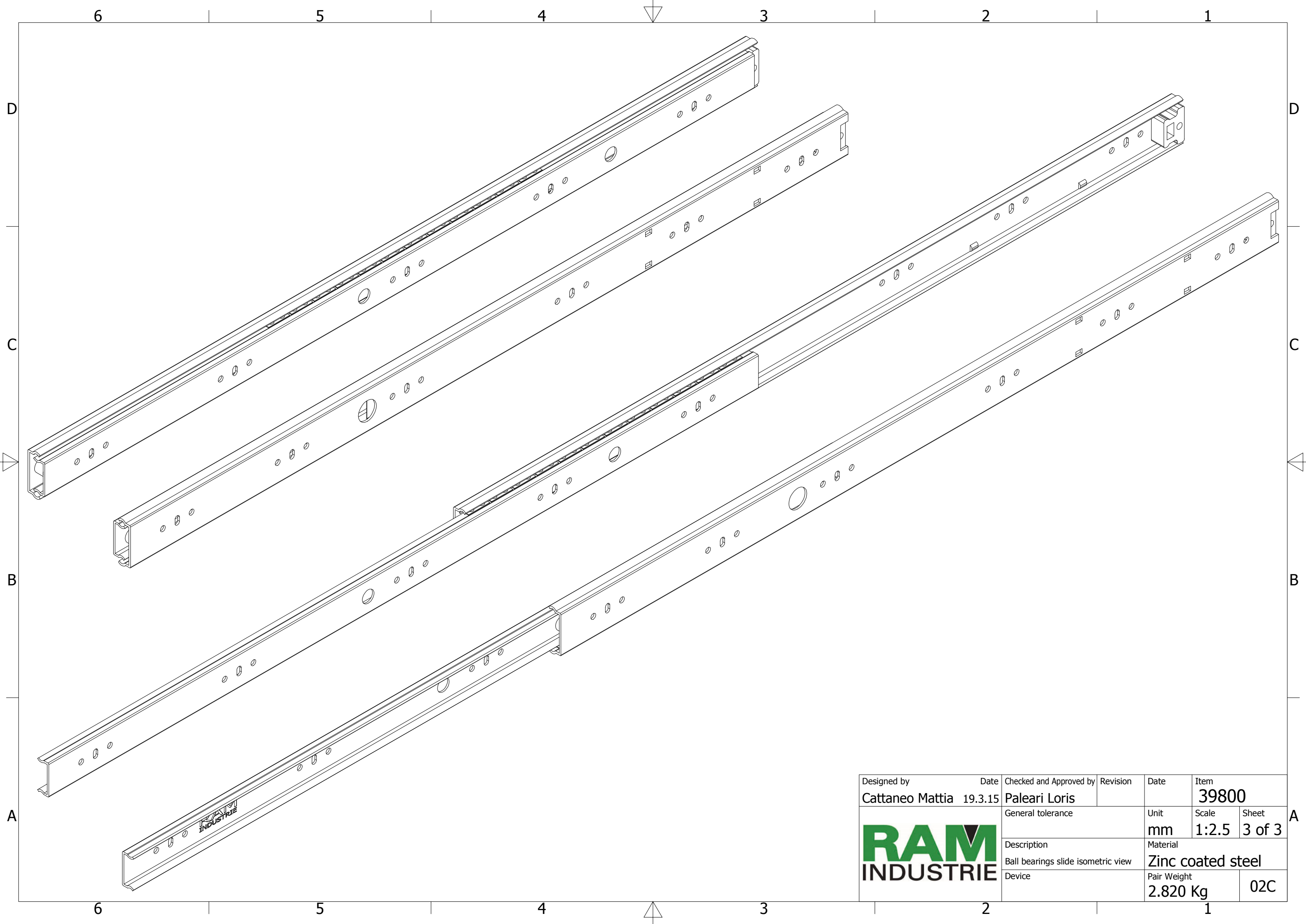



Designed by	Date	Checked and Approved by	Revision	Date	Item
Cattaneo Mattia	19.3.15	Paleari Loris			39800
General tolerance			Unit	Scale	Sheet
SS-ISO-2768-1 MEDIUM			mm	1:1.5	1 of 3
Description			Material		
Closed ball bearings slide			Zinc coated steel		
Device			Pair Weight	02C	
			2.820 Kg		





Designed by	Date	Checked and Approved by	Revision	Date	Item
Cattaneo Mattia	19.3.15	Paleari Loris			39800
	General tolerance		Unit	Scale	Sheet
	SS-ISO-2768-1 VERY COARSE		mm	1:2	2 of 3
	Description		Material		
	Open ball bearings slide		Zinc coated steel		
Device		Pair Weight			
		2.820 Kg		02C	



Designed by Cattaneo Mattia	Date 19.3.15	Checked and Approved by Paleari Loris	Revision	Date	Item 39800
		General tolerance		Unit mm	Scale 1:2.5
		Description Ball bearings slide isometric view		Material Zinc coated steel	
Device				Pair Weight 2.820 Kg	02C

A