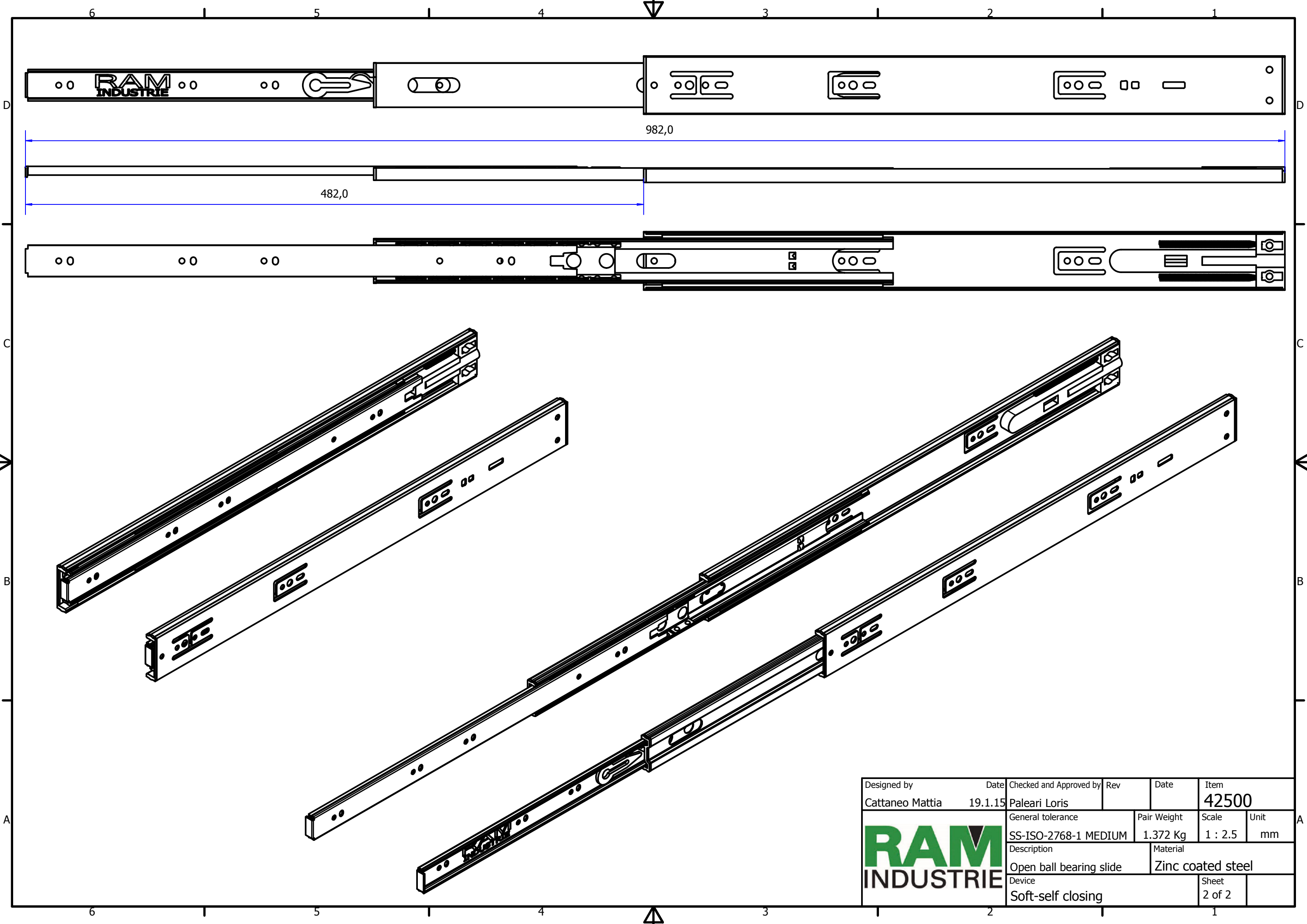


Designed by	Date	Checked and Approved by	Rev	Date	Item
Cattaneo Mattia	19.1.15	Paleari Loris			42500
General tolerance			Pair Weight	Scale	Unit
SS-ISO-2768-1 MEDIUM			1.372 Kg	1 : 1.5	mm
Description				Material	
Closed ball bearing slide				Zinc coated steel	
Device					Sheet
Soft-self closing					1 of 2





Designed by	Date	Checked and Approved by	Rev	Date	Item
Cattaneo Mattia	19.1.15	Paleari Loris			42500
General tolerance			Pair Weight	Scale	Unit
SS-ISO-2768-1 MEDIUM			1.372 Kg	1 : 2.5	mm
Description				Material	
Open ball bearing slide				Zinc coated steel	
Device					Sheet
Soft-self closing					2 of 2

