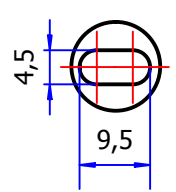
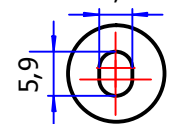


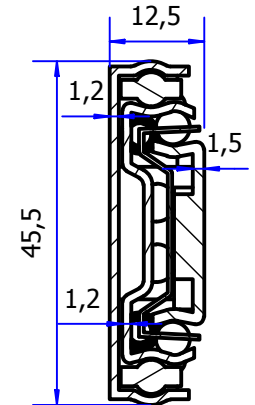
B (1:1)



C (1:1)

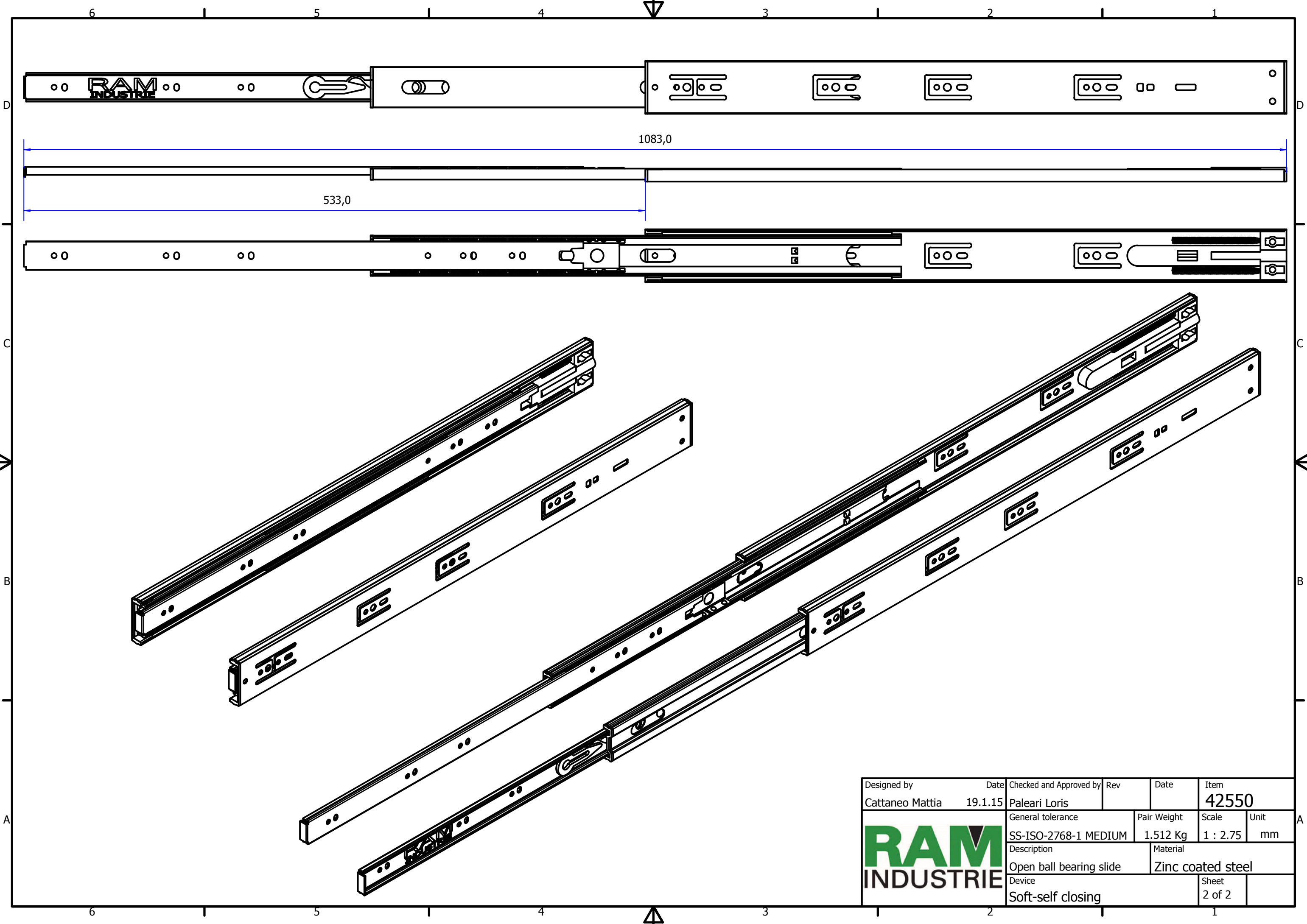


A-A (1:1)



Designed by	Date	Checked and Approved by	Rev	Date	Item
Cattaneo Mattia	19.1.15	Paleari Loris			42550
General tolerance			Pair Weight	Scale	Unit
SS-ISO-2768-1 MEDIUM			1.512 Kg	1 : 1.5	mm
Description				Material	
Closed ball bearing slide				Zinc coated steel	
Device					Sheet
Soft-self closing					1 of 2





Designed by	Date	Checked and Approved by	Rev	Date	Item
Cattaneo Mattia	19.1.15	Paleari Loris			42550
General tolerance			Pair Weight	Scale	Unit
SS-ISO-2768-1 MEDIUM			1.512 Kg	1 : 2.75	mm
Description				Material	
Open ball bearing slide				Zinc coated steel	
Device					Sheet
Soft-self closing					2 of 2

