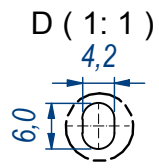
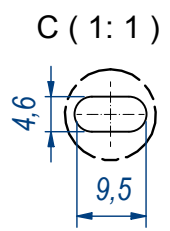
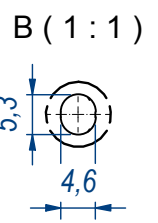
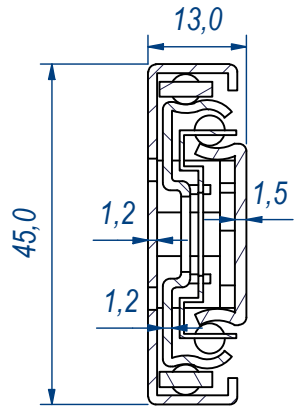
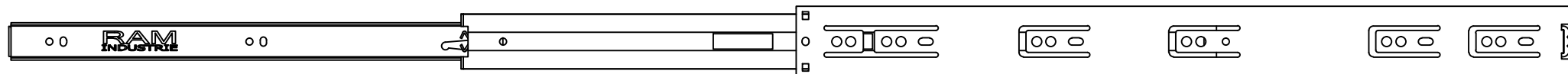


SEZ. A-A



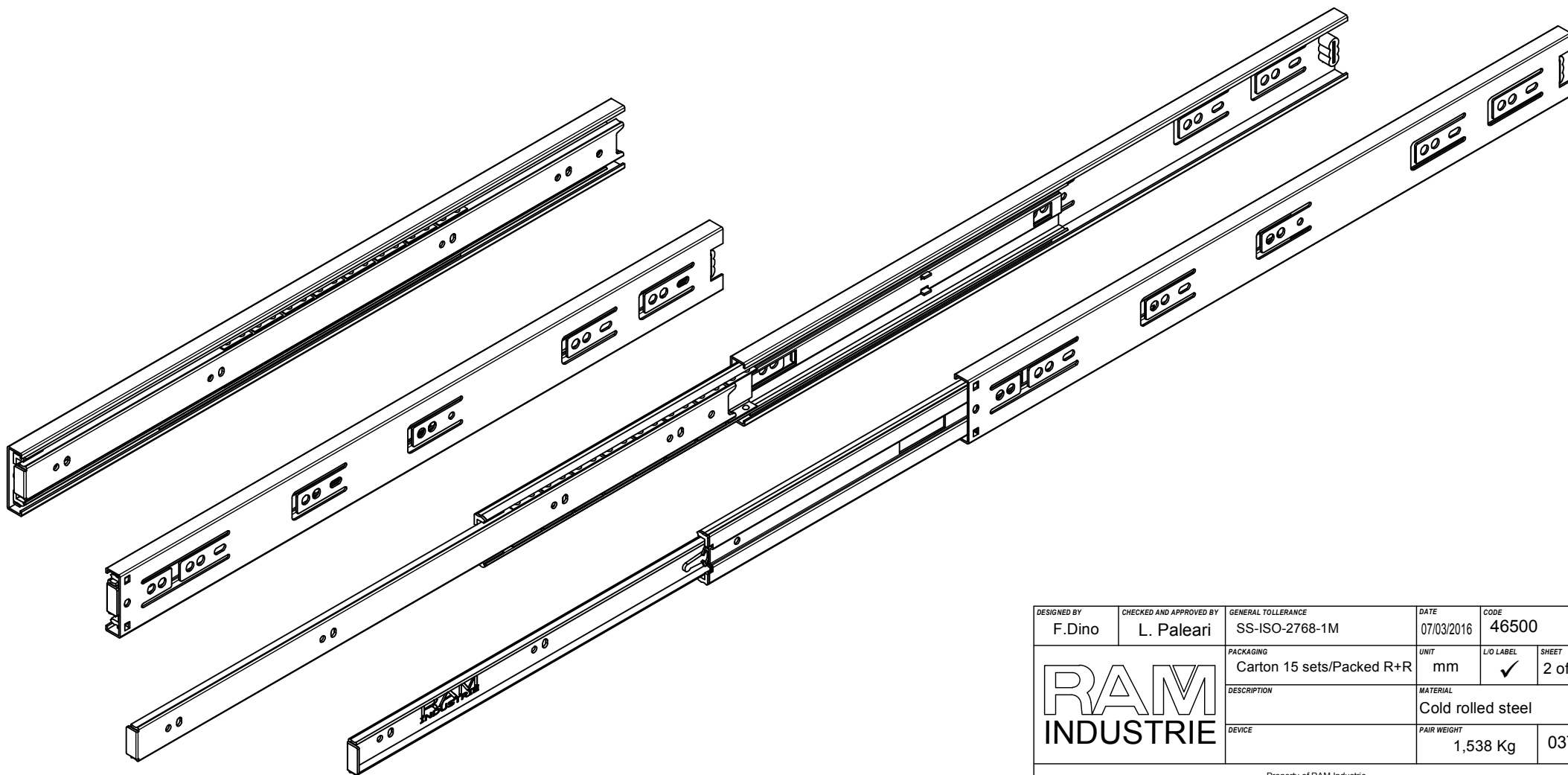
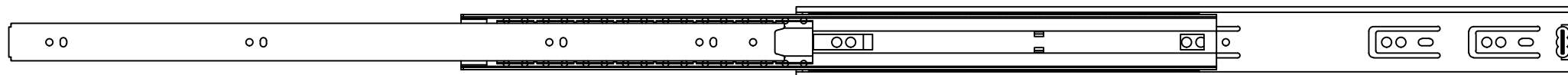
REVISION HISTORY			
REV	DESCRIPTION	APPROVED BY	DATE
1	Modified limit switch (21-21)	F.Dino	12/10/2021


DESIGNED BY F.Dino	CHECKED AND APPROVED BY L. Paleari	GENERAL TOLERANCE SS-ISO-2768-1M	DATE 07/03/2016	CODE 46500
		PACKAGING Carton 15 sets/Packed R+R	UNIT mm	L/O LABEL ✓
		DESCRIPTION	MATERIAL Cold rolled steel	
		DEVICE	PAIR WEIGHT 1,538 Kg	SHEET 1 of 2
Property of RAM Industrie. Without its written authorization the present drawing shall neither be used for construction anyway, communicated to third parties, nor reproduced.				



1007,0

507,0



DESIGNED BY F.Dino	CHECKED AND APPROVED BY L. Paleari	GENERAL TOLERANCE SS-ISO-2768-1M	DATE 07/03/2016	CODE 46500	
		PACKAGING Carton 15 sets/Packed R+R	UNIT mm	L/O LABEL ✓	SHEET 2 of 2
		DESCRIPTION	MATERIAL Cold rolled steel		
		DEVICE	PAIR WEIGHT 1,538 Kg	03T	

Property of RAM Industrie.  
Without its written authorization the present drawing shall neither be used for construction anyway, communicated to third parties, nor reproduced.