

Cage with 16 ball bearings
Cage with 14 ball bearings

A (1.5 : 1)

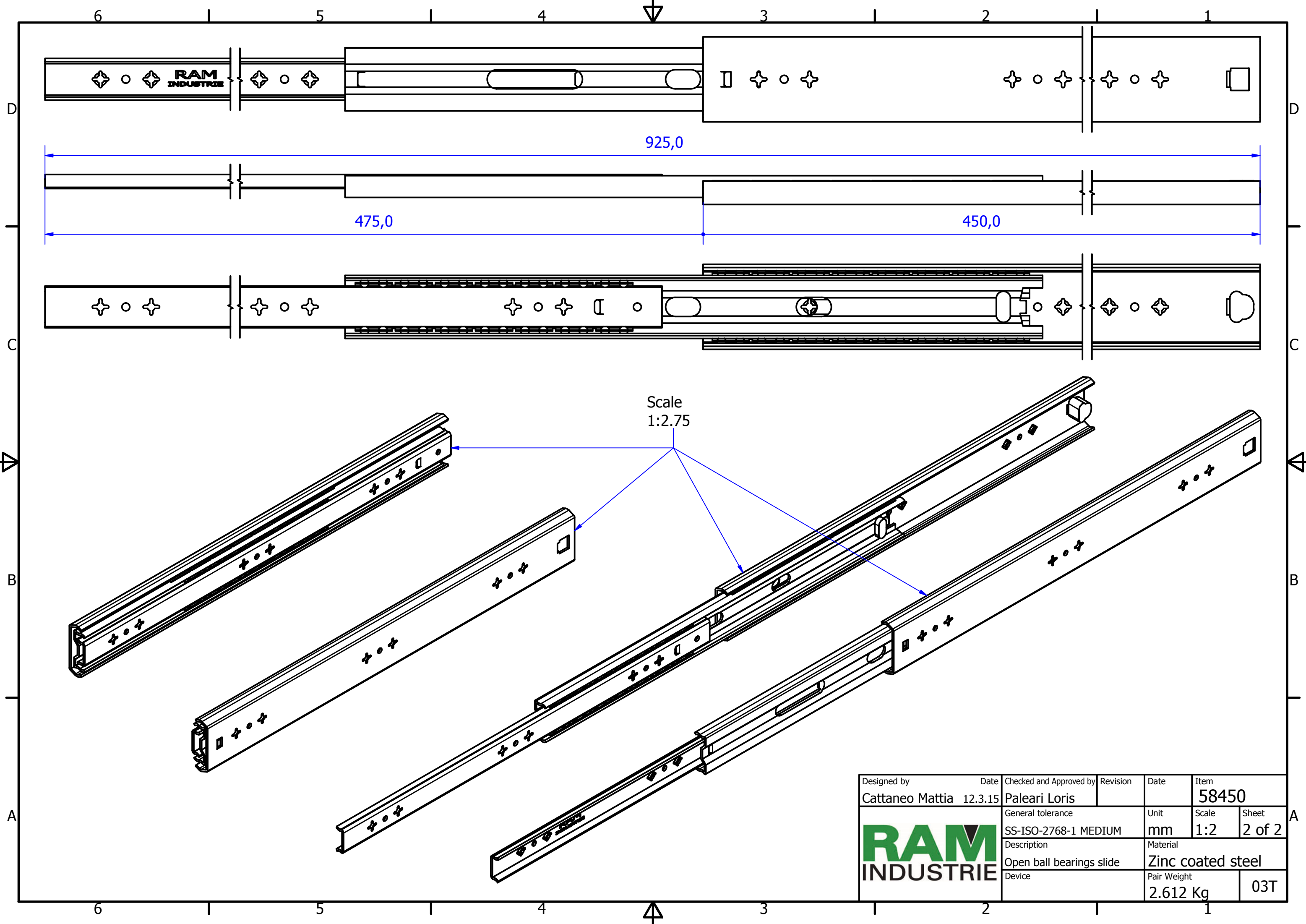
B (1.5 : 1)

C-C (1.5 : 1)


D (2 : 1)

Designed by Cattaneo Mattia	Date 12.3.15	Checked and Approved by Paleari Loris	Revision	Date	Item 58450
General tolerance SS-ISO-2768-1 MEDIUM			Unit mm	Scale 1:1.5	Sheet 1 of 2
Description Closed ball bearings slide			Material Zinc coated steel		
Device			Pair Weight 2.612 Kg	03T	





Scale
1:2.75

Designed by Cattaneo Mattia	Date 12.3.15	Checked and Approved by Paleari Loris	Revision	Date	Item 58450
			General tolerance SS-ISO-2768-1 MEDIUM	Unit mm	Scale 1:2
			Description Open ball bearings slide	Material Zinc coated steel	Sheet 2 of 2
Device				Pair Weight 2.612 Kg	03T