


Cage with 16 ball bearings  
Cage with 18 ball bearings

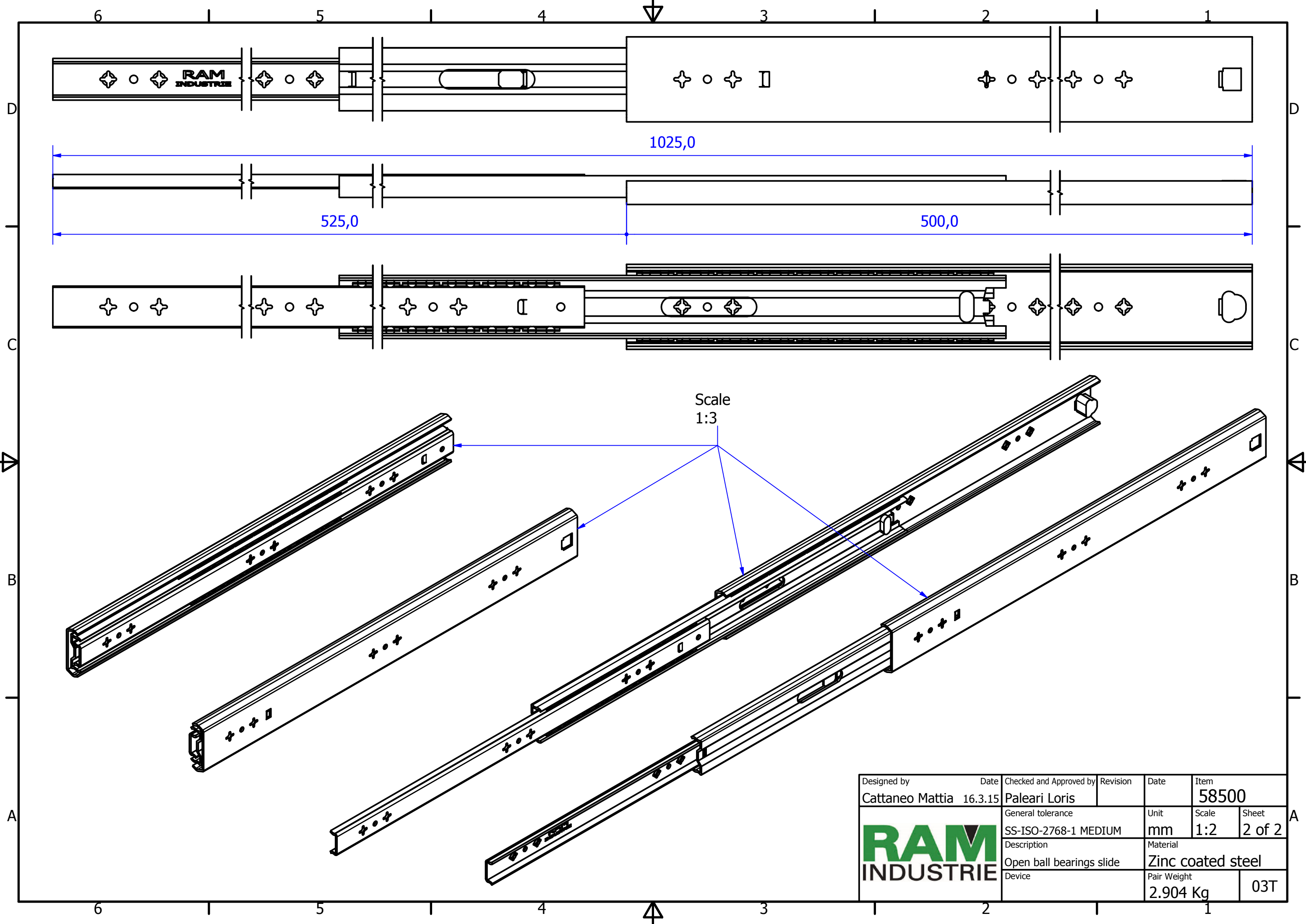
A ( 1.5 : 1 )

B ( 1.5 : 1 )


C-C ( 1.5 : 1 )

D ( 2 : 1 )

Designed by Cattaneo Mattia	Date 16.3.15	Checked and Approved by Paleari Loris	Revision	Date	Item 58500
			General tolerance SS-ISO-2768-1 MEDIUM	Unit mm	Scale 1:1.5
			Description Closed ball bearings slide	Material Zinc coated steel	Sheet 1 of 2
Device				Pair Weight 2.904 Kg	03T



Scale  
1:3

Designed by Cattaneo Mattia	Date 16.3.15	Checked and Approved by Paleari Loris	Revision	Date	Item 58500
		General tolerance SS-ISO-2768-1 MEDIUM		Unit mm	Scale 1:2
		Description Open ball bearings slide		Material Zinc coated steel	
Device		Pair Weight 2.904 Kg		Sheet 2 of 2 03T	