


Cage with 18 ball bearings
Cage with 20 ball bearings

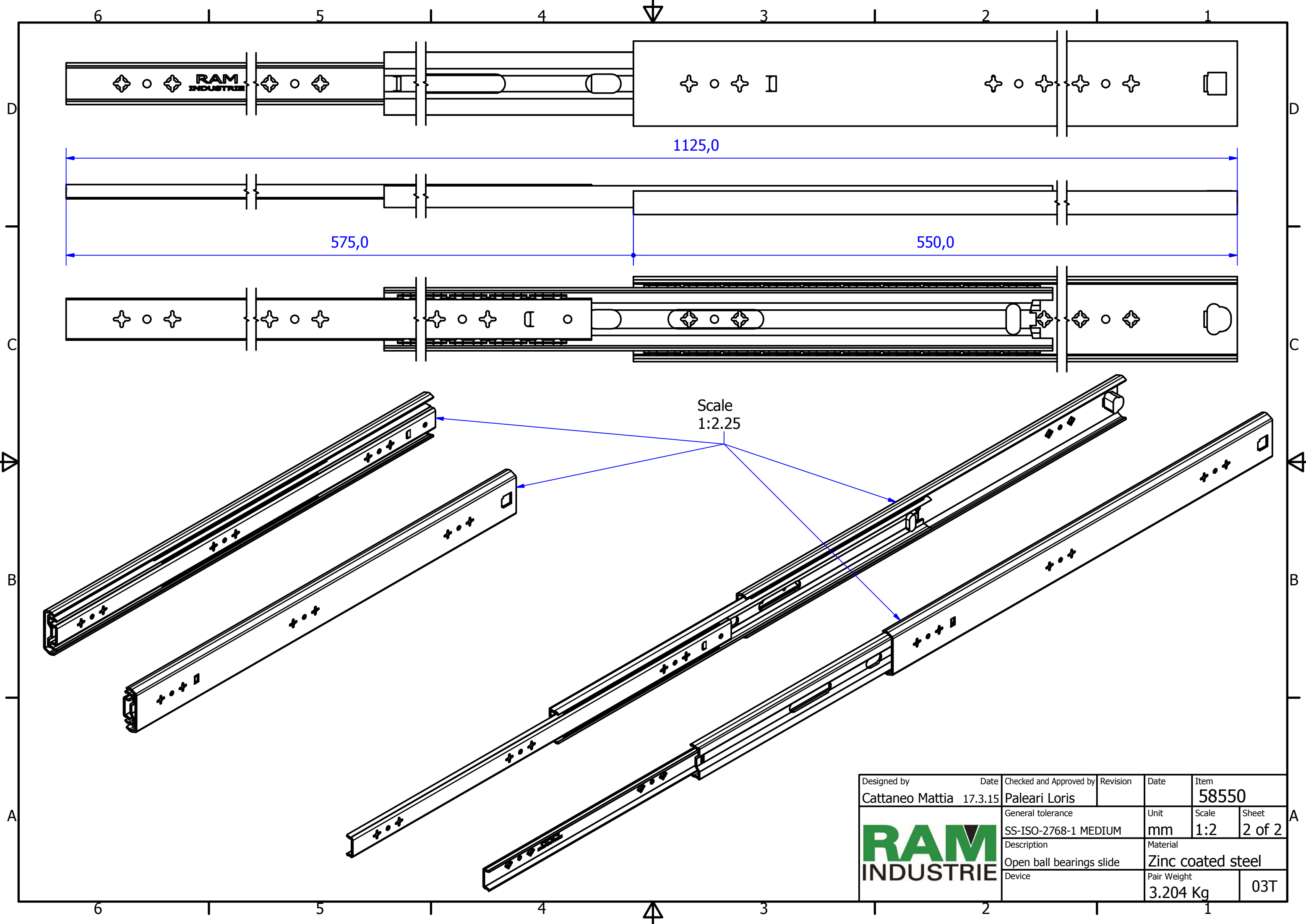
A (1.5 : 1)

B (1.5 : 1)


C-C (1.5 : 1)

D (2 : 1)

Designed by Cattaneo Mattia	Date 17.3.15	Checked and Approved by Paleari Loris	Revision	Date	Item 58550
			General tolerance SS-ISO-2768-1 MEDIUM	Unit mm	Scale 1:1.5
			Description Closed ball bearings slide	Material Zinc coated steel	Sheet 1 of 2
Device				Pair Weight 3.204 Kg	03T



Scale
1:2.25

Designed by Cattaneo Mattia	Date 17.3.15	Checked and Approved by Paleari Loris	Revision	Date	Item 58550
		General tolerance SS-ISO-2768-1 MEDIUM		Unit mm	Scale 1:2
		Description Open ball bearings slide		Material Zinc coated steel	
Device		Pair Weight 3.204 Kg		03T	

A