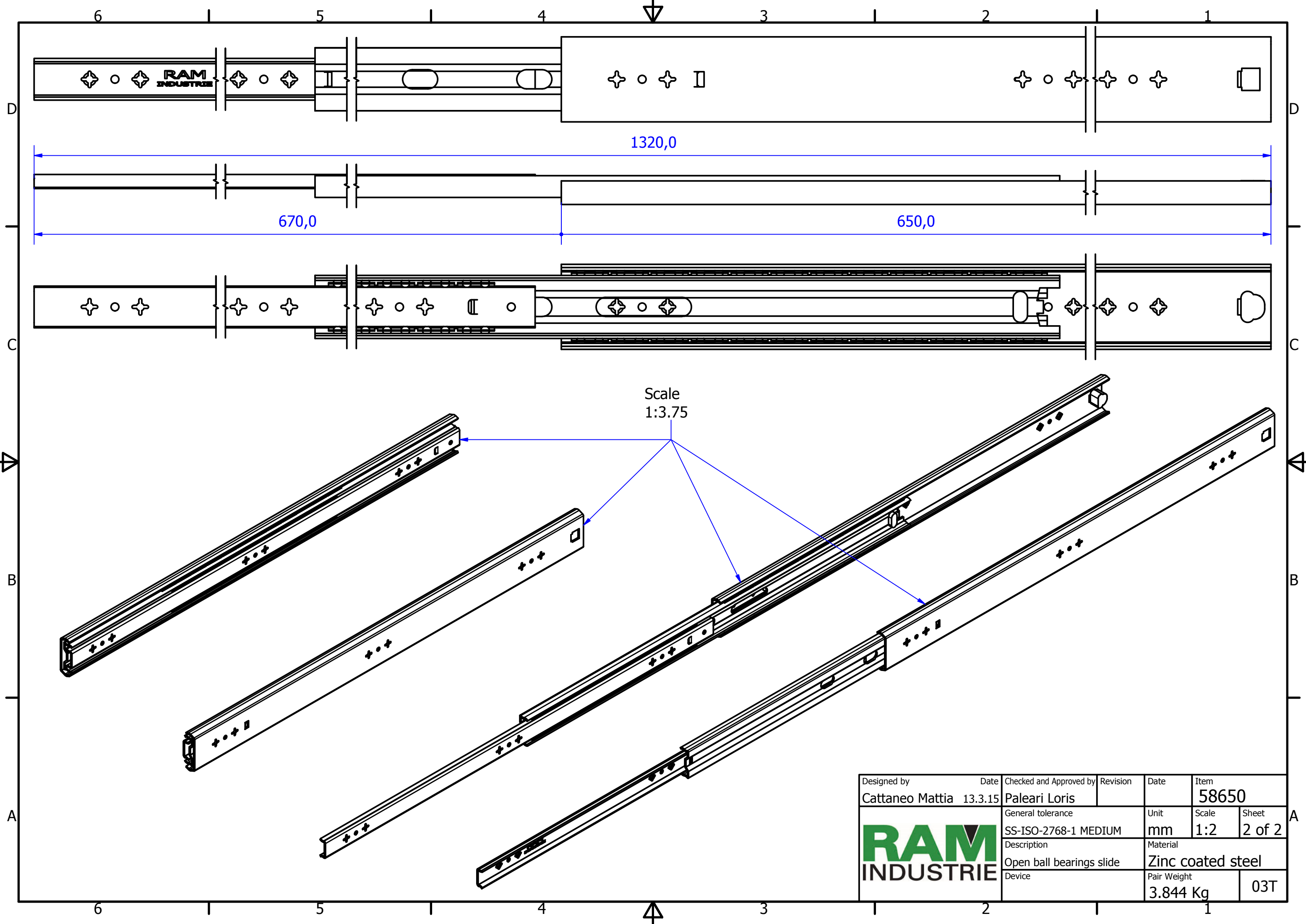



Designed by	Date	Checked and Approved by	Revision	Date	Item
Cattaneo Mattia	13.3.15	Paleari Loris			58650
General tolerance			Unit	Scale	Sheet
SS-ISO-2768-1 MEDIUM			mm	1:1.5	1 of 2
Description			Material		
Closed ball bearings slide			Zinc coated steel		
Device			Pair Weight		
			3.844 Kg		03T





Scale
1:3.75

Designed by Cattaneo Mattia	Date 13.3.15	Checked and Approved by Paleari Loris	Revision	Date	Item 58650
		General tolerance SS-ISO-2768-1 MEDIUM	Unit mm	Scale 1:2	Sheet 2 of 2
		Description Open ball bearings slide	Material Zinc coated steel		
Device		Pair Weight 3.844 Kg	03T		