


A (1.5 : 1)

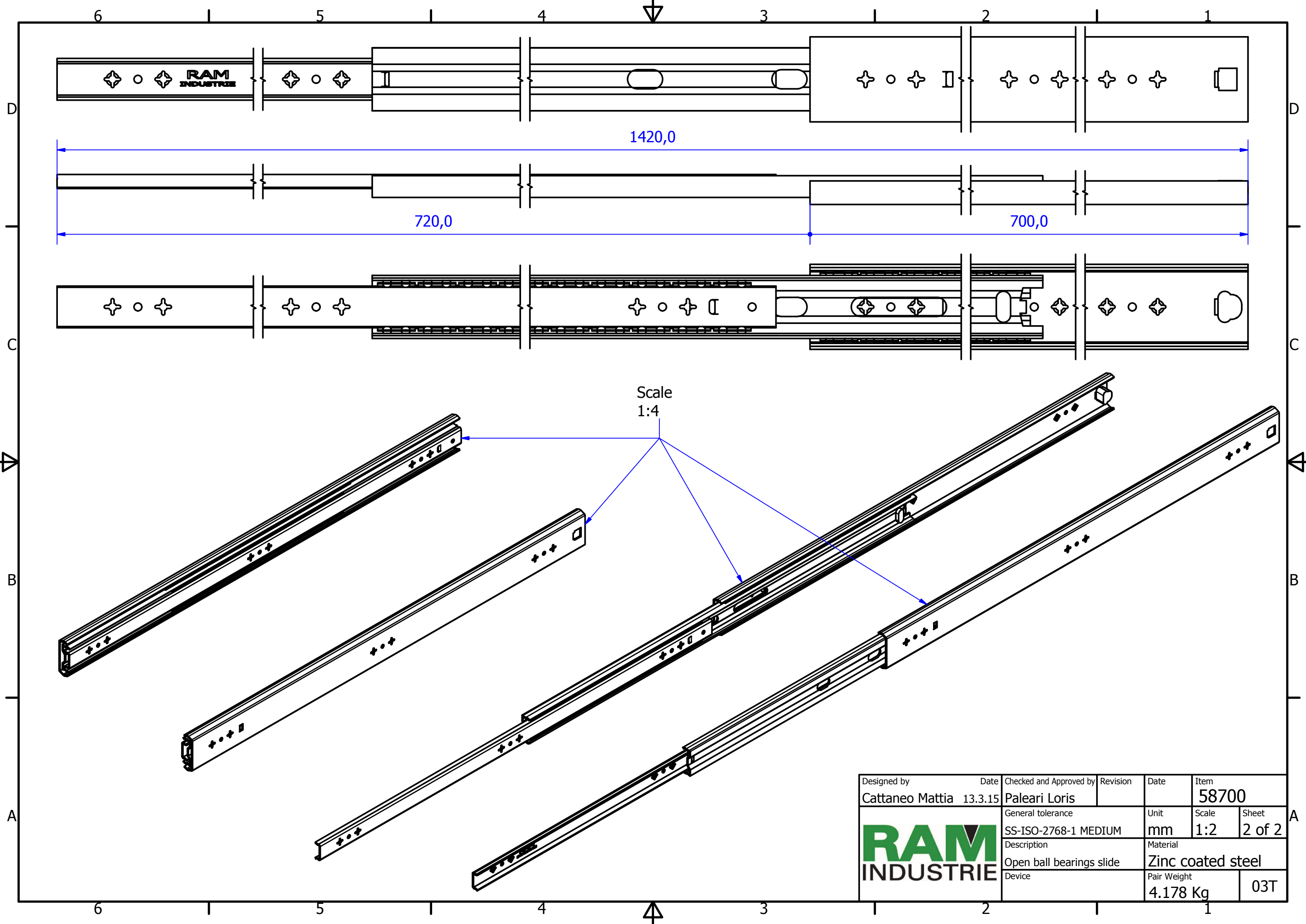
B (1.5 : 1)

C-C (1.5 : 1)


D (2 : 1)

- Cage with 24 ball bearings
- Cage with 26 ball bearings

| | | | | | |
|---|-----------------|--|---|-------------------------------|-----------------|
| Designed by Cattaneo Mattia | Date 13.3.15 | Checked and Approved by Paleari Loris | Revision | Date | Item 58700 |
|  | | | General tolerance SS-ISO-2768-1 MEDIUM | Unit mm | Scale 1:1.5 |
| | | | Description Closed ball bearings slide | Material Zinc coated steel | Sheet 1 of 2 |
| Device | | | | Pair Weight 4.178 Kg | 03T |



Scale
1:4

| | | | | | |
|---|-----------------|--|---|-------------------------------|---------------|
| Designed by Cattaneo Mattia | Date 13.3.15 | Checked and Approved by Paleari Loris | Revision | Date | Item 58700 |
|  | | | General tolerance SS-ISO-2768-1 MEDIUM | Unit mm | Scale 1:2 |
| | | | Description Open ball bearings slide | Material Zinc coated steel | |
| Device | | | | Pair Weight 4.178 Kg | 03T |