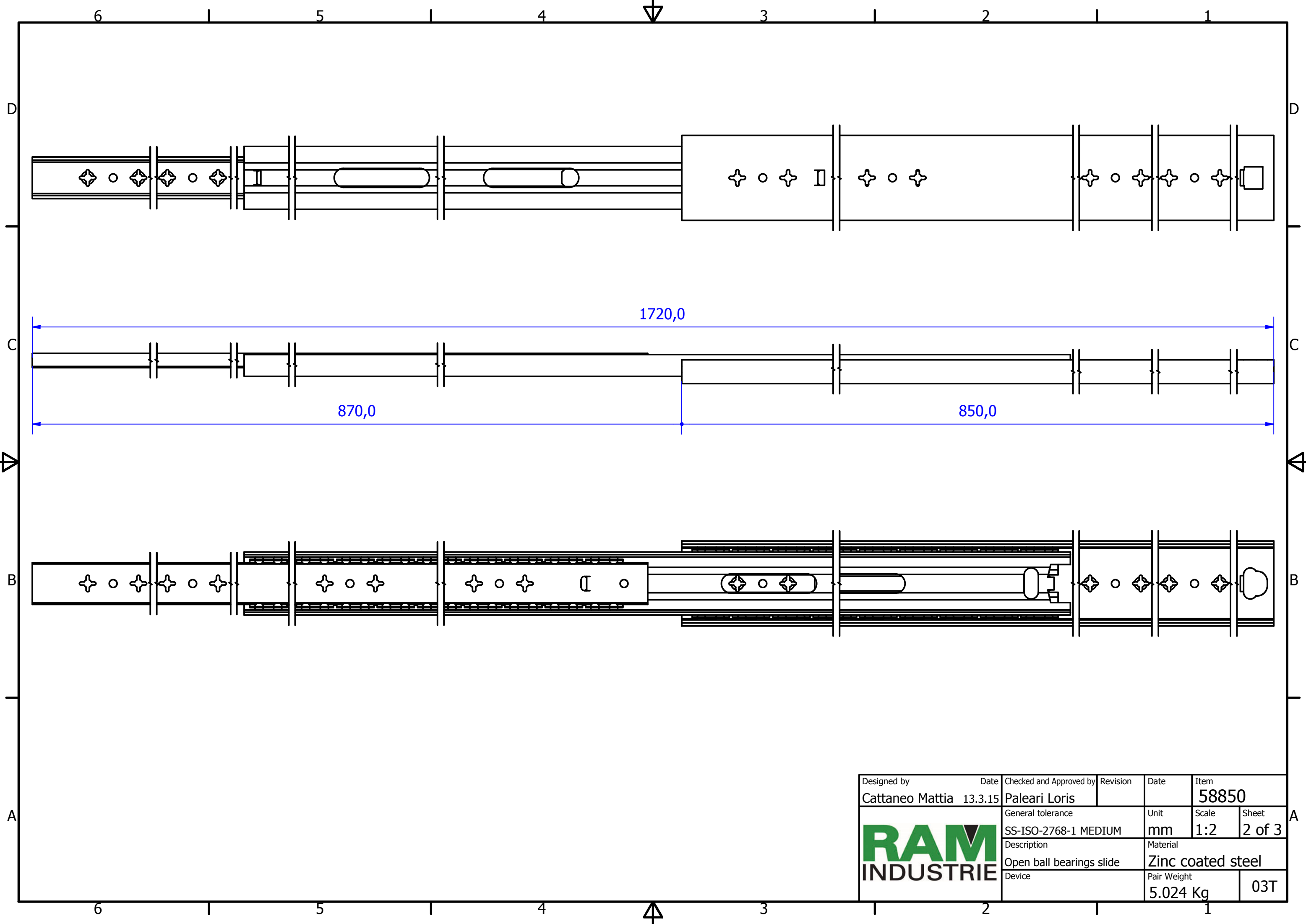

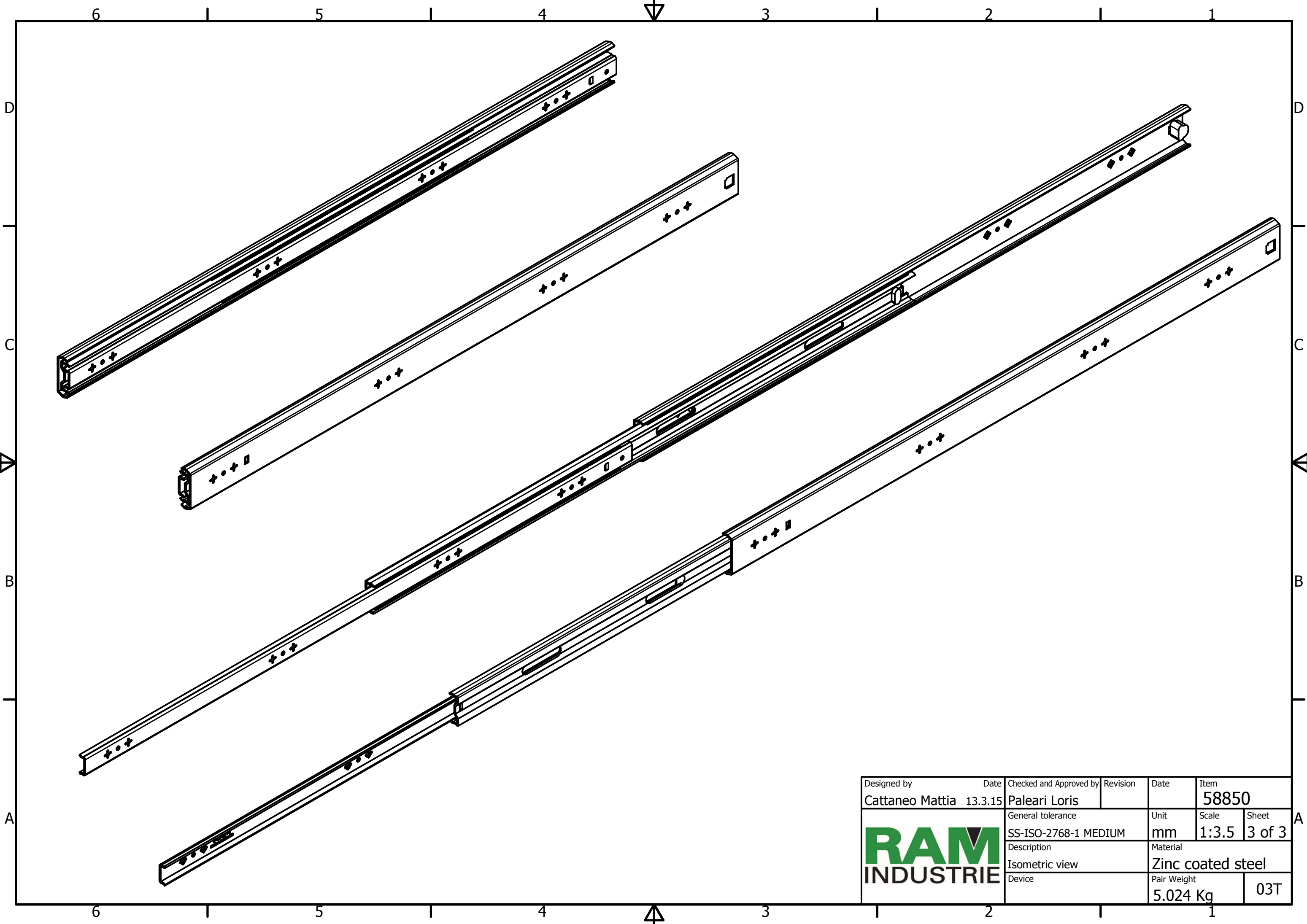



Designed by	Date	Checked and Approved by	Revision	Date	Item
Cattaneo Mattia	13.3.15	Paleari Loris			58850
General tolerance			Unit	Scale	Sheet
SS-ISO-2768-1 MEDIUM			mm	1:1.5	1 of 3
Description			Material		
Closed ball bearings slide			Zinc coated steel		
Device			Pair Weight		
			5.024 Kg		03T





Designed by	Date	Checked and Approved by	Revision	Date	Item
Cattaneo Mattia	13.3.15	Paleari Loris			58850
	General tolerance		Unit	Scale	Sheet
	SS-ISO-2768-1 MEDIUM		mm	1:2	2 of 3
	Description		Material		
Open ball bearings slide		Zinc coated steel			
Device		Pair Weight		03T	
		5.024 Kg			



Designed by	Date	Checked and Approved by	Revision	Date	Item
Cattaneo Mattia	13.3.15	Paleari Loris			58850
	General tolerance		Unit	Scale	Sheet
	SS-ISO-2768-1 MEDIUM		mm	1:3.5	3 of 3
Description			Material		
Isometric view			Zinc coated steel		
Device			Pair Weight		
			5.024 Kg		03T