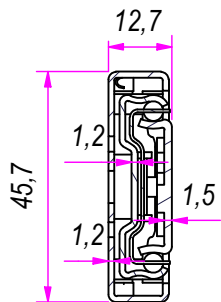
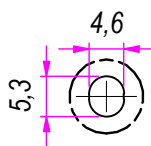


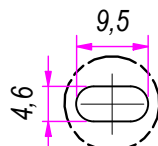
SEZ. A-A



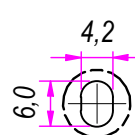
B (1:1)



C (1:1)

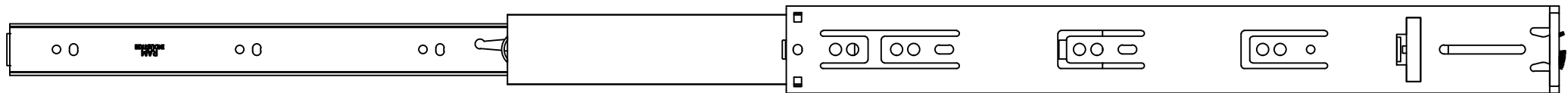


D (1:1)

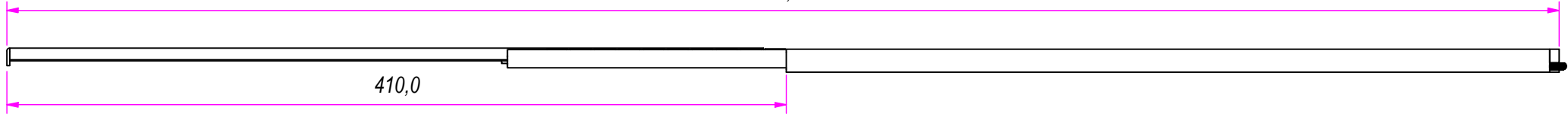


DESIGNED BY F. Dino	CHECKED AND APPROVED BY L. Paleari	GENERAL TOLERANCE SS-ISO-2768-1M	DATE 18/05/2016	SHEET 1 of 2	CODE 60400
		PACKAGING Carton 15 sets/Packed R+R	CYCLES TEST ✓	SALT SPRAY TEST	L/O LABEL ✓
		DESCRIPTION	MATERIAL Cold rolled steel		
DEVICE Self closing with double spring		PAIR WEIGHT 1,156 Kg	UNIT mm	03T	

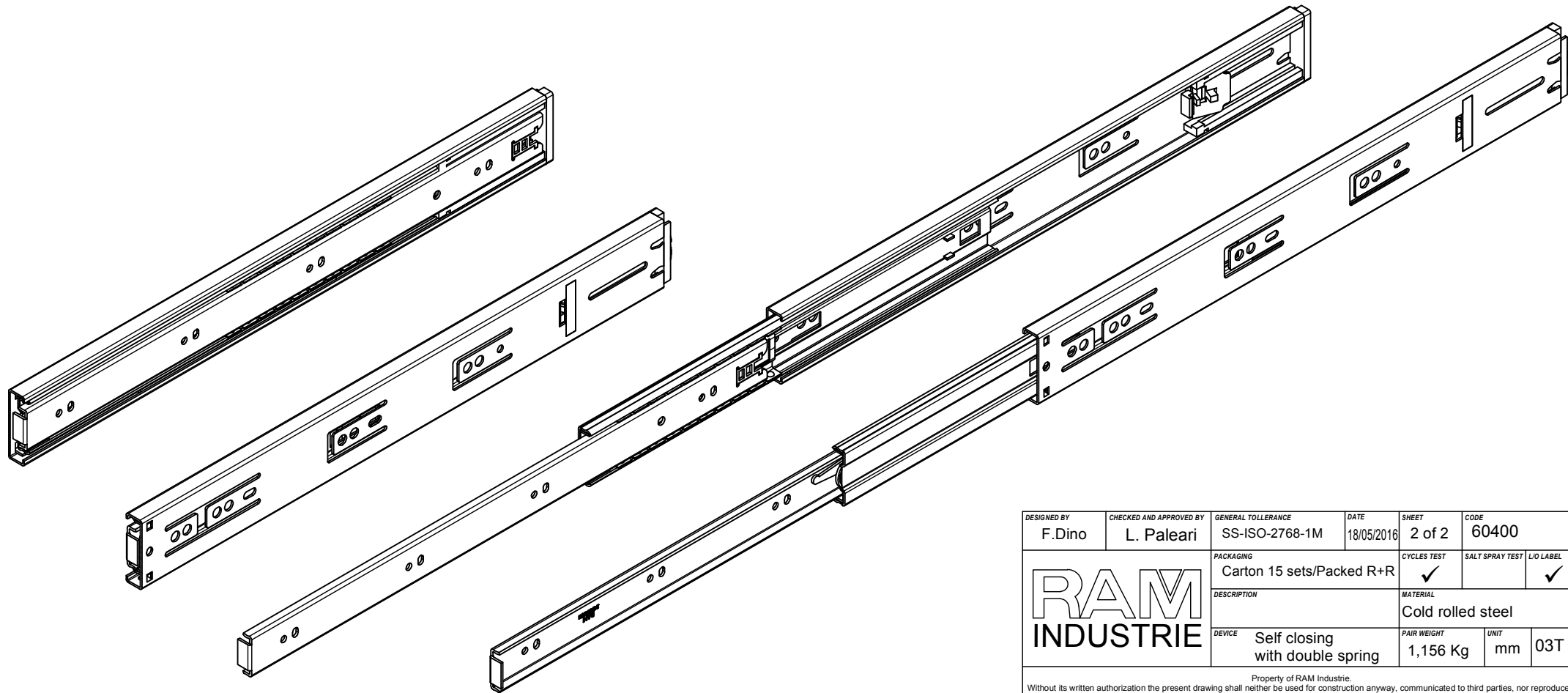
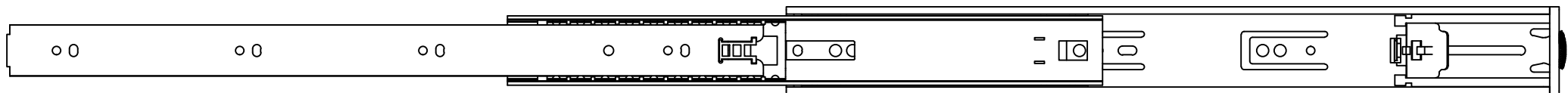
Property of RAM Industrie.  
Without its written authorization the present drawing shall neither be used for construction anyway, communicated to third parties, nor reproduced.



815,0



410,0



DESIGNED BY F. Dino	CHECKED AND APPROVED BY L. Paleari	GENERAL TOLERANCE SS-ISO-2768-1M	DATE 18/05/2016	SHEET 2 of 2	CODE 60400
PACKAGING Carton 15 sets/Packed R+R			CYCLES TEST ✓	SALT SPRAY TEST ✓	L/O LABEL ✓
				MATERIAL Cold rolled steel	
				DEVICE Self closing with double spring	PAIR WEIGHT 1,156 Kg
Property of RAM Industrie. Without its written authorization the present drawing shall neither be used for construction anyway, communicated to third parties, nor reproduced.					