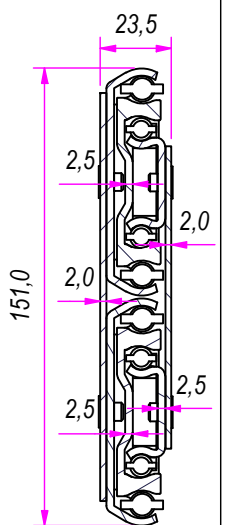


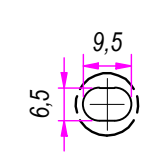
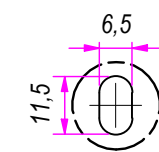
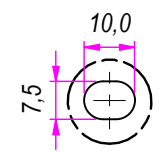
SEZ. A-A



B (1 : 1.5)

C (1 : 1.5)

D (1 : 1.5)

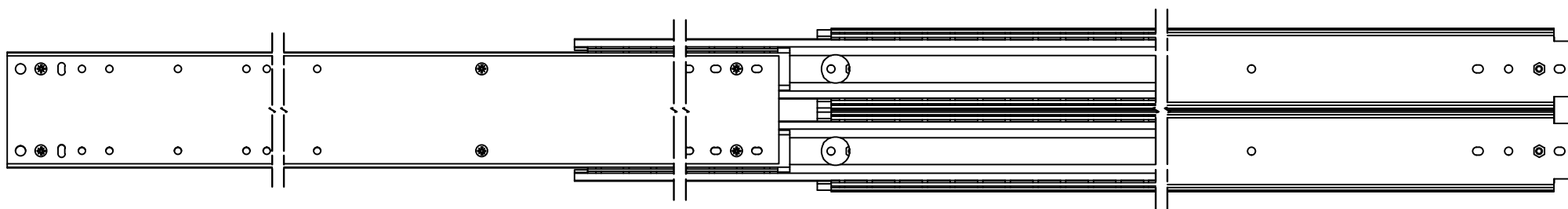
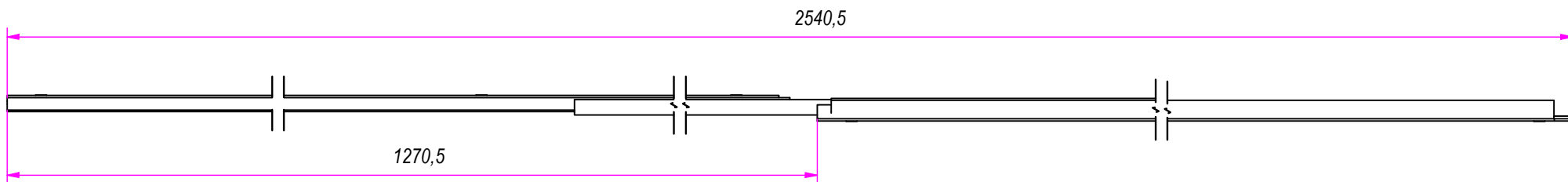
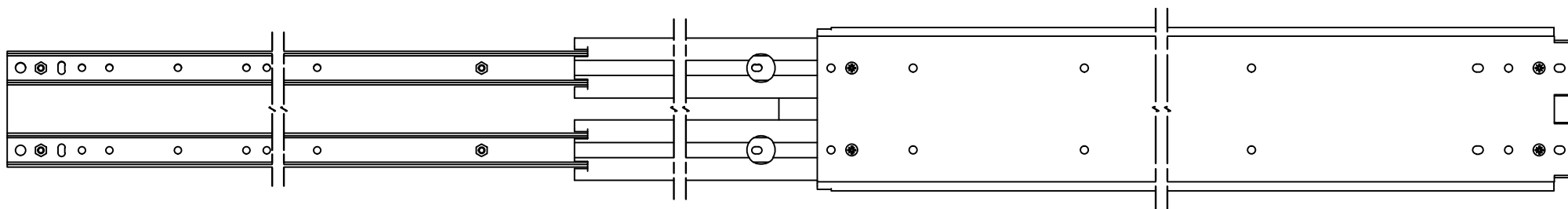



DESIGNED BY F. Dino	CHECKED AND APPROVED BY L. Paleari	GENERAL TOLERANCE SS-ISO-2768-1M	DATE 06/07/2020	CODE 881250
PACKAGING			UNIT mm	SHEET 1 of 3
DESCRIPTION			MATERIAL Cold rolled steel	
DEVICE			PAIR WEIGHT	



Guide per cassetti; guide telescopiche	Coulisses à billes; coulisse télescopique	REVISION HISTORY	
Drawer slide; telescopic ball bearing slide	Guías para cajones; guía teleópica	REV	DESCRIPTION
Kugelführung; Teleskopschienen		1a	06/07/2020

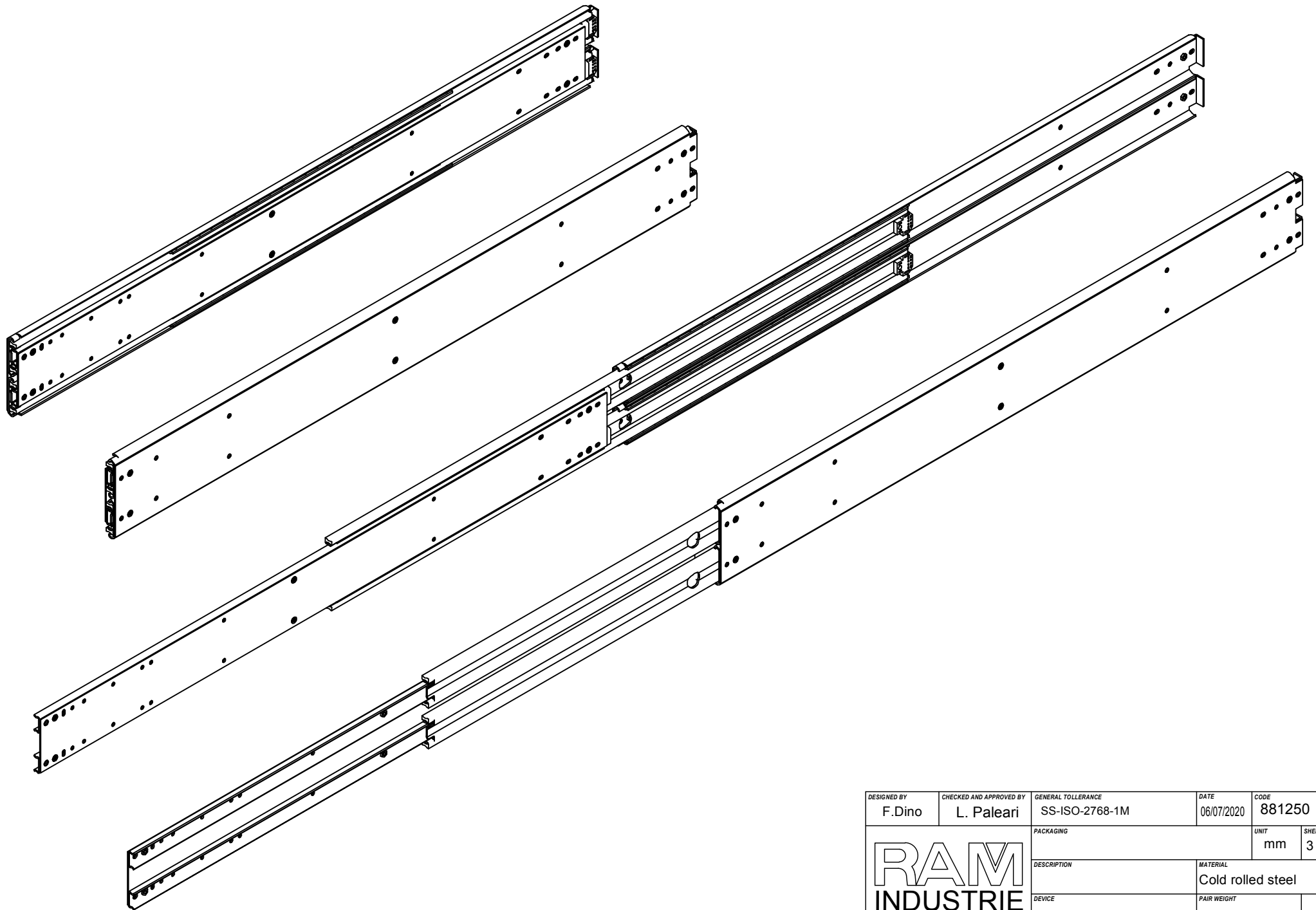
Property of RAM Industrie.
Without its written authorization the present drawing shall neither be used for construction anyway, communicated to third parties, nor reproduced.




DESIGNED BY F.Dino	CHECKED AND APPROVED BY L. Paleari	GENERAL TOLERANCE SS-ISO-2768-1M	DATE 06/07/2020	CODE 881250
			PACKAGING	UNIT mm
			DESCRIPTION	MATERIAL Cold rolled steel
			DEVICE	PAIR WEIGHT
		SHEET 2 of 3		

		REVISION HISTORY	
	REV	DESCRIPTION	DATE
Guide per cassetti; guide telescopiche			
Coulisses à billes; coulisse télescopique			
Drawer slide; telescopic ball bearing slide	1a		06/07/2020
Guías para cajones; guía teleópica			
Kugelführung; Teleskopschienen			

Property of RAM Industrie.
Without its written authorization the present drawing shall neither be used for construction anyway, communicated to third parties, nor reproduced.



DESIGNED BY F. Dino	CHECKED AND APPROVED BY L. Paleari	GENERAL TOLERANCE SS-ISO-2768-1M	DATE 06/07/2020	CODE 881250	
			PACKAGING	UNIT mm	SHEET 3 of 3
			DESCRIPTION	MATERIAL Cold rolled steel	
DEVICE			PAIR WEIGHT		

Property of RAM Industrie.
Without its written authorization the present drawing shall neither be used for construction anyway, communicated to third parties, nor reproduced.