

D (2 : 1)

E (2 : 1)


F (2 : 1)

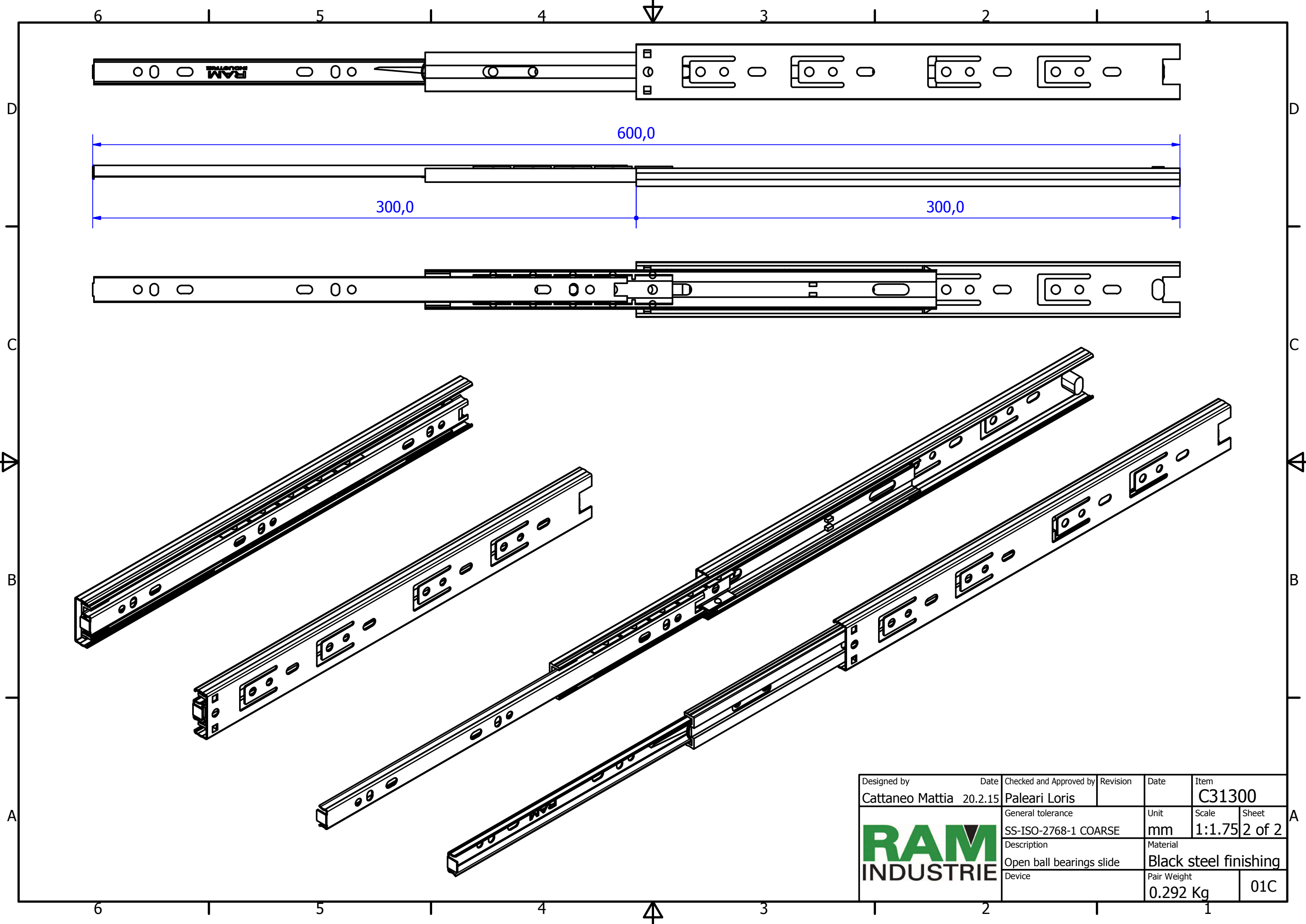
C-C (3 : 1)

B (1 : 1)

A (1 : 1)

Cage with 5 ball bearings pairs

|   |                 |  |   |                                   |                 |
|---|-----------------|--|---|-----------------------------------|-----------------|
| Designed by<br>Cattaneo Mattia  | Date<br>20.2.15 | Checked and Approved by<br>Paleari Loris | Revision                                  | Date                              | Item<br>C31300  |
|  |                 |  | General tolerance<br>SS-ISO-2768-1 COARSE | Unit<br>mm                        | Scale<br>1:1    |
|   |                 |  | Description<br>Closed ball bearings slide | Material<br>Black steel finishing | Sheet<br>1 of 2 |
|   |                 |  |   | Pair Weight<br>0.292 Kg           | 01C             |



|                          |         |                         |                       |        |        |
|--------------------------|---------|-------------------------|-----------------------|--------|--------|
| Designed by              | Date    | Checked and Approved by | Revision              | Date   | Item   |
| Cattaneo Mattia          | 20.2.15 | Paleari Loris           |                       |        | C31300 |
| General tolerance        |         |                         | Unit                  | Scale  | Sheet  |
| SS-ISO-2768-1 COARSE     |         |                         | mm                    | 1:1.75 | 2 of 2 |
| Description              |         |                         | Material              |        |        |
| Open ball bearings slide |         |                         | Black steel finishing |        |        |
| Device                   |         |                         | Pair Weight           | 01C    |        |
|                          |         |                         | 0.292 Kg              |        |        |

