
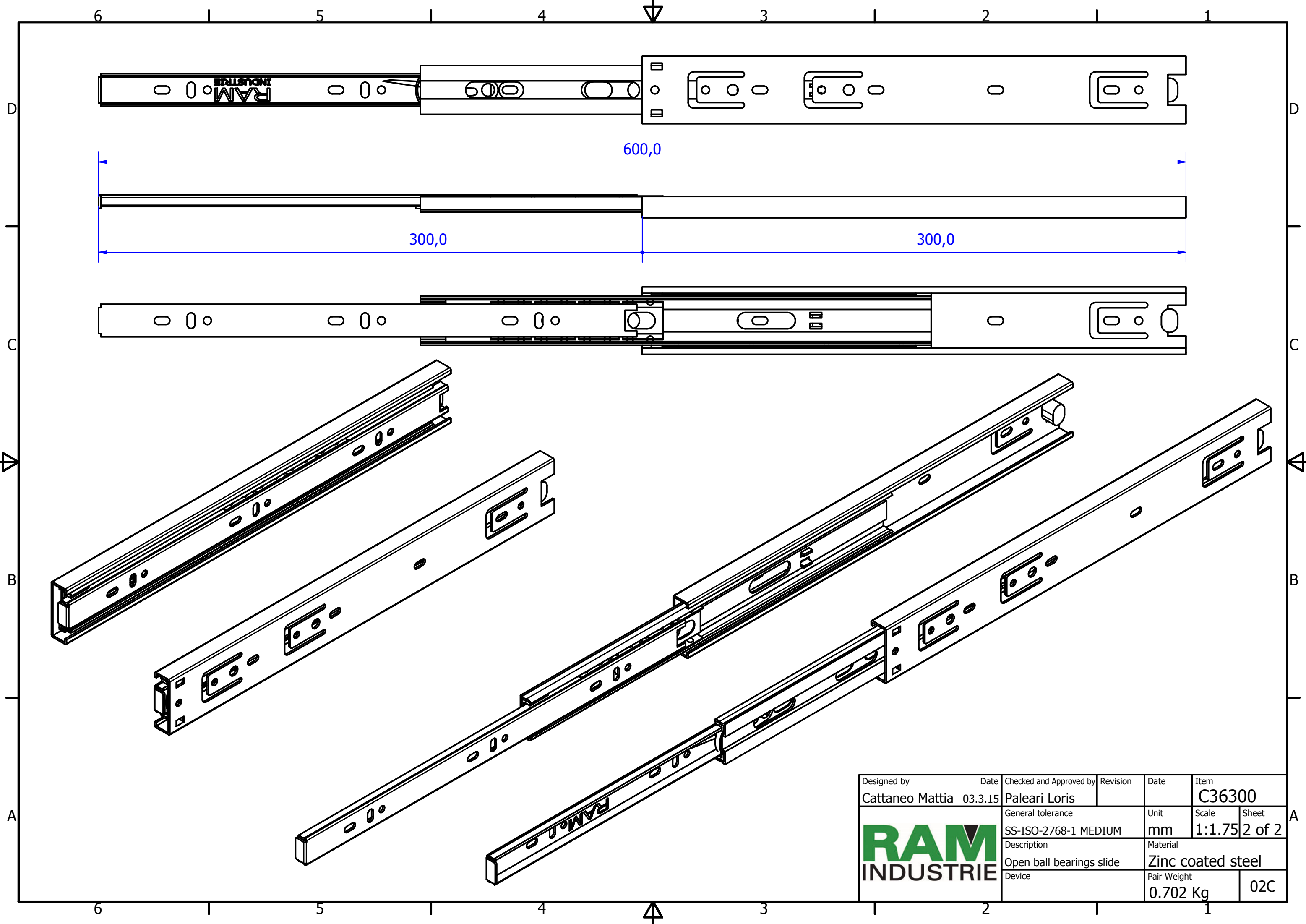



Designed by Cattaneo Mattia	Date 03.3.15	Checked and Approved by Paleari Loris	Revision	Date	Item C36300
			General tolerance SS-ISO-2768-1 MEDIUM	Unit mm	Scale 1:1
			Description Closed ball bearings slide	Material Zinc coated steel	Sheet 1 of 2
Device				Pair Weight 0.702 Kg	02C



Designed by Cattaneo Mattia	Date 03.3.15	Checked and Approved by Paleari Loris	Revision	Date	Item C36300
		General tolerance SS-ISO-2768-1 MEDIUM	Unit mm	Scale 1:1.75	Sheet 2 of 2
		Description Open ball bearings slide	Material Zinc coated steel		Pair Weight 0.702 Kg
Device					