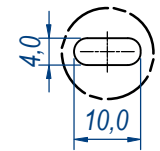
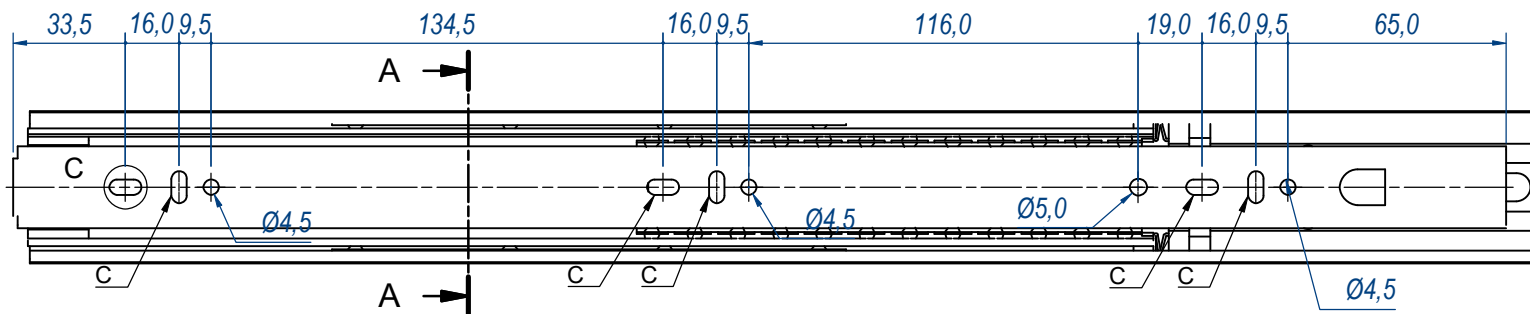
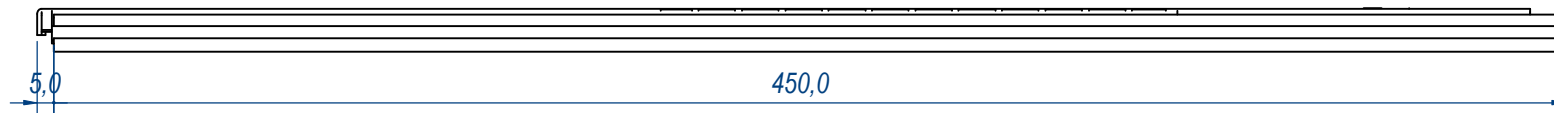
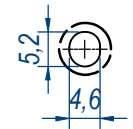


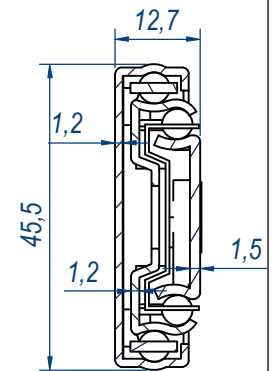
D (1:1)



E (1:1)

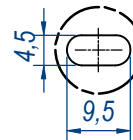
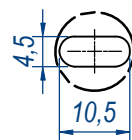


SEZ. A-A



B (1:1)

C (1:1)

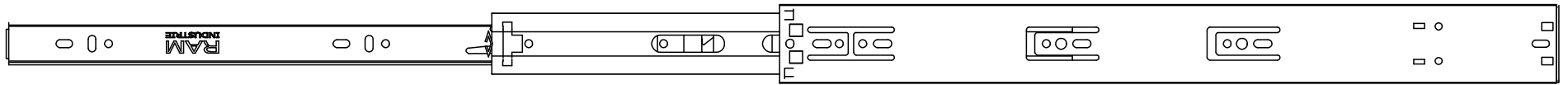


| | | | | |
|-------------------------------------|---------------------------------------|----------|-------------------------------|--------------------------|
| DESIGNED BY F. Dino | CHECKED AND APPROVED BY L. Paleari | REVISION | DATE 25/02/2016 | CODE G41450 |
| GENERAL TOLERANCE SS-ISO-2768-1M | | | UNIT mm | SCALE SHEET 1 of 3 |
| DESCRIPTION | | | MATERIAL Zinc coated steel | |
| DEVICE Push and rebound system | | | PAIR WEIGHT 1,293 Kg | 04C |

RAMI
INDUSTRIE

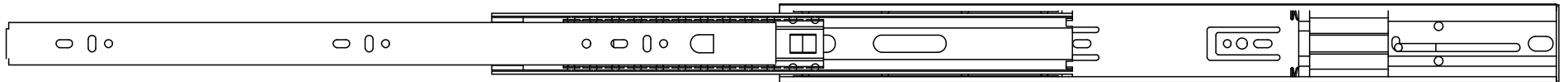
| REVISION HISTORY | | | |
|------------------|-------------------------------|-------------|------------|
| REV | DESCRIPTION | APPROVED BY | DATE |
| 1 | Added slotted hole (16-03) | F. Dino | 22/09/2016 |
| 2 | Modified thicknesses (20-186) | F. Dino | 06/07/2021 |

Property of RAM Industrie.
Without its written authorization the present drawing shall neither be used for construction anyway, communicated to third parties, nor reproduced.



897,0

447,0



| | | | | |
|---|---------------------------------------|------------|-------------------------------|-----------------|
| DESIGNED BY F.Dino | CHECKED AND APPROVED BY L. Paleari | REVISION | DATE 25/02/2016 | CODE G41450 |
| GENERAL TOLLERANCE SS-ISO-2768-1M | | UNIT mm | SCALE | SHEET 2 of 3 |
| DESCRIPTION DEVICE Push and rebound system | | | MATERIAL Zinc coated steel | |
| | | | PAIR WEIGHT 1,293 Kg | 04C |

Property of RAMI Industrie.
Without its written authorization the present drawing shall neither be used for construction anyway, communicated to third parties, nor reproduced.