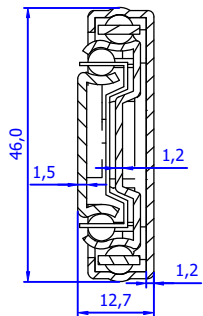
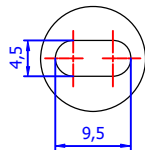


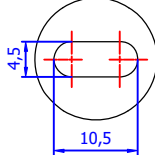
A-A (1.5 : 1)



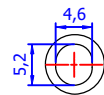
B (2 : 1)



C (2 : 1)



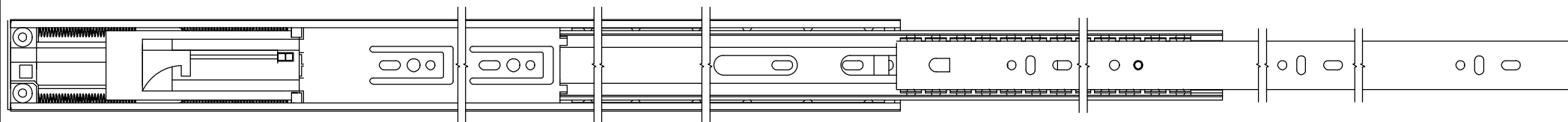
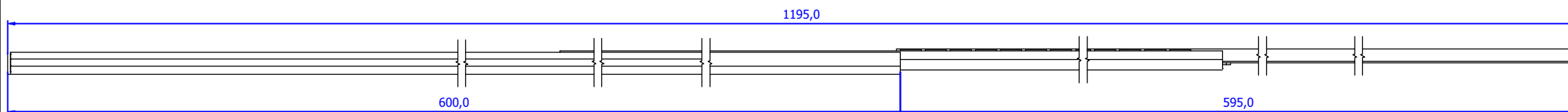
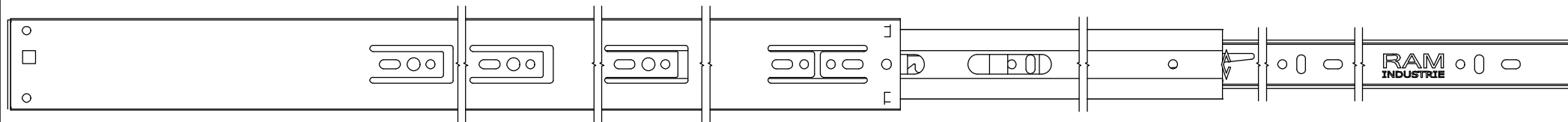
E (2 : 1)



REVISION HISTORY			
REV	DESCRIPTION	APPROVED BY	DATE
1	Added slotted hole (16-03)	F.Dino	21/09/2016
2	Modified thicknesses (21-59)	F.Dino	13/10/2021

Designed by Cattaneo Mattia	Date 30.3.15	Checked and Approved by Paleari Loris	Revision	Date	Item G42600
General tolerance			Unit mm	Scale 1:1.5	Sheet 1 of 3
Description SS-ISO-2768-1 MEDIUM			Material Zinc coated steel		
Device Soft-self closing			Pair Weight 1.71 Kg	04C	

Il disegno è proprietà della ditta Ram Industrie s.r.l. e non può essere riprodotto o ceduto a terzi senza autorizzazione. La ditta si riserva di apportare eventuali modifiche senza preavviso.



Designed by	Date	Checked and Approved by	Revision	Date	Item
Cattaneo Mattia	30.3.15	Paleari Loris			G42600
General tolerance	Unit	Scale	Sheet		
SS-ISO-2768-1 VERY COARSE	mm	1:2	1 of 3		
Description	Material				
Open ball bearings slide	Zinc coated steel				
Device	Pair Weight				
Soft-self closing	1.71 Kg	04C			

Il disegno è proprietà della ditta Ram Industrie s.r.l. e non può essere riprodotto o ceduto a terzi senza autorizzazione. La ditta si riserva di apportare eventuali modifiche senza preavviso.