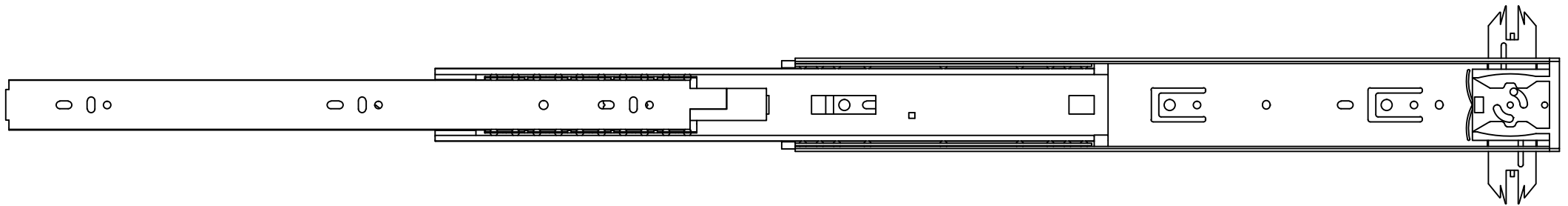
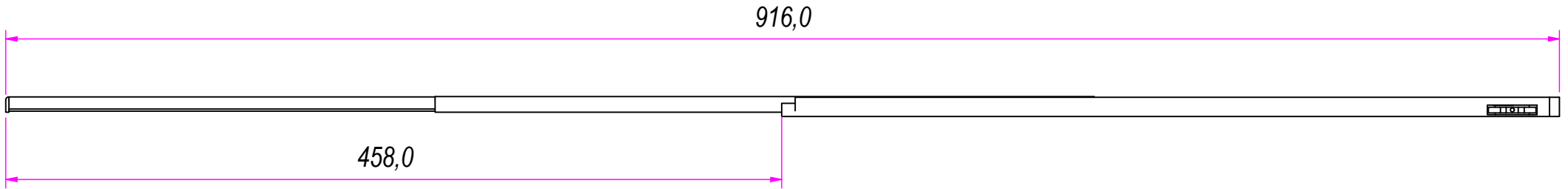
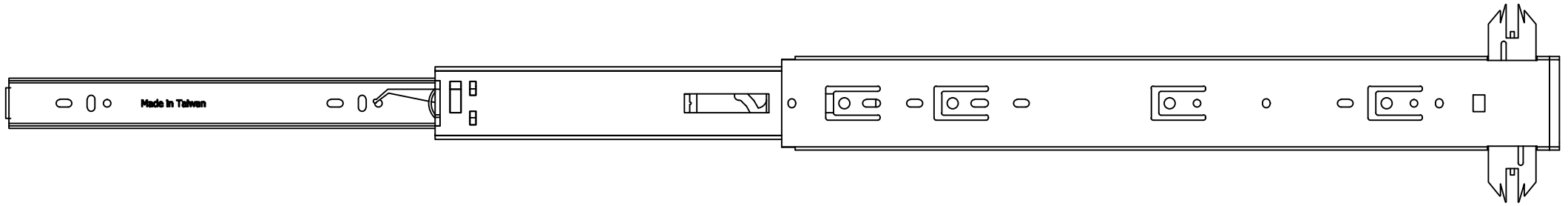



REVISION HISTORY			
REV	DESCRIPTION	APPROVED BY	DATE
1	New thickness 1,8x1,5x1,8 (17-13)	F.Dino	19/12/2016

DESIGNED BY F.Dino	CHECKED AND APPROVED BY L. Paleari	DATE 19/12/2016	CODE IL61450
		GENERAL TOLLERANCE SS-ISO-2768-1M	UNIT mm
		DESCRIPTION Made in Taiwan logo	MATERIAL Cold rolled steel
		PAIR WEIGHT 2,026 Kg	SHEET 1 of 3
DEVICES Property of RAM Industrie. Without its written authorization the present drawing shall neither be used for construction anyway, communicated to third parties, nor reproduced.			

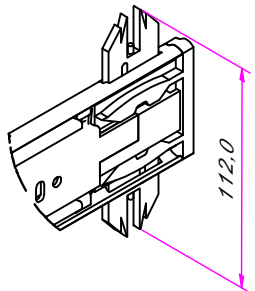


REVISION HISTORY			
REV	DESCRIPTION	APPROVED BY	DATE
1	New thickness 1,8x1,5x1,8 (17-13)	F.Dino	19/12/2016

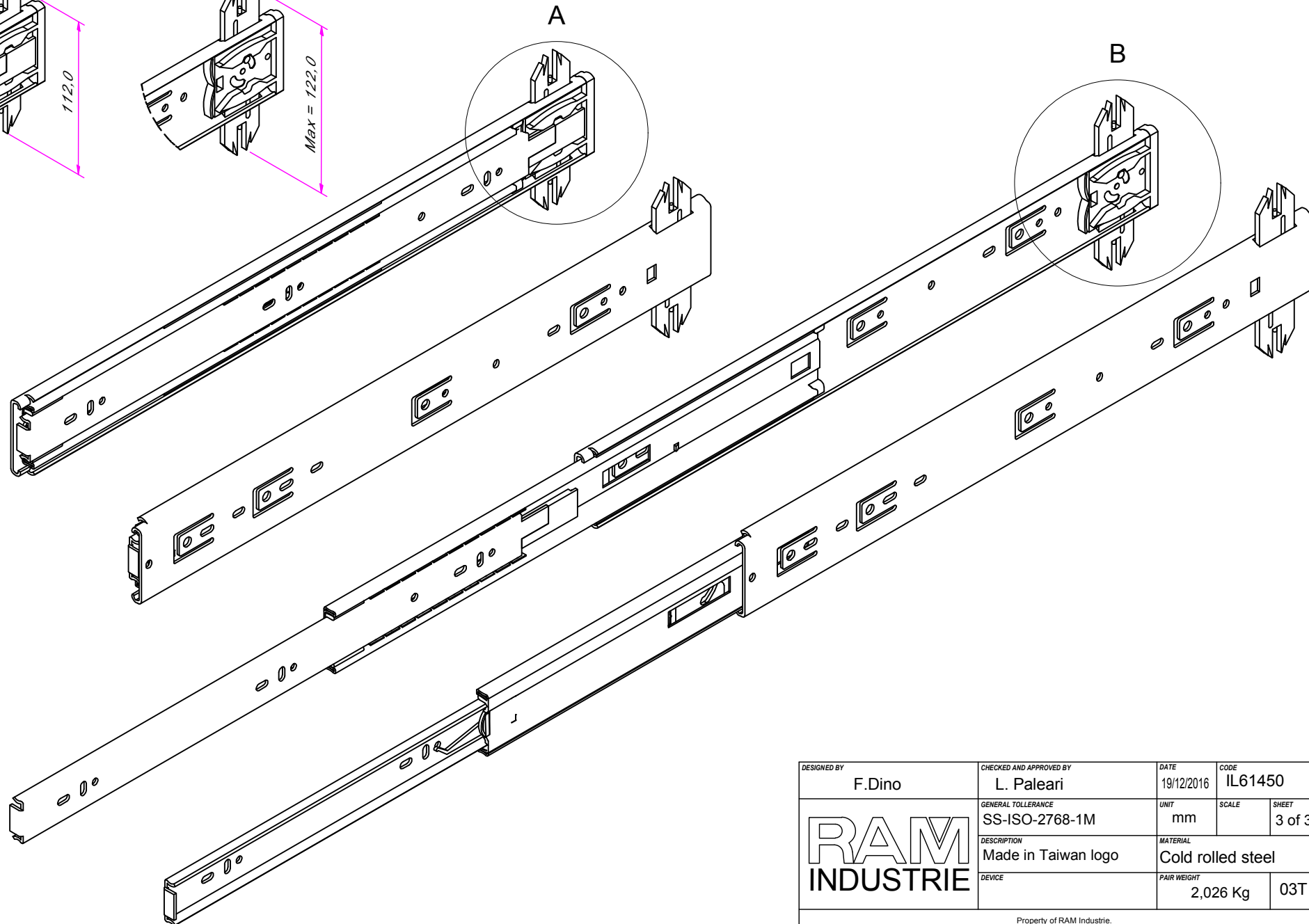
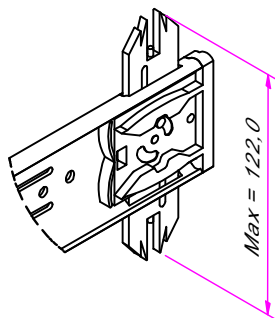
DESIGNED BY F.Dino	CHECKED AND APPROVED BY L. Paleari	DATE 19/12/2016	CODE IL61450	
	GENERAL TOLLERANCE SS-ISO-2768-1M	UNIT mm	SCALE	SHEET 2 of 3
	DESCRIPTION Made in Taiwan logo	MATERIAL Cold rolled steel		
	DEVICE	PAIR WEIGHT 2,026 Kg	03T	

Property of RAM Industrie.
Without its written authorization the present drawing shall neither be used for construction anyway, communicated to third parties, nor reproduced.

A (1:3)
CLOSED



B (1:3)
OPEN



DESIGNED BY F.Dino	CHECKED AND APPROVED BY L. Paleari	DATE 19/12/2016	CODE IL61450	
	GENERAL TOLLERANCE SS-ISO-2768-1M	UNIT mm	SCALE	SHEET 3 of 3
	DESCRIPTION Made in Taiwan logo	MATERIAL Cold rolled steel		
	DEVICE	PAIR WEIGHT 2,026 Kg	03T	

Property of RAM Industrie.
Without its written authorization the present drawing shall neither be used for construction anyway, communicated to third parties, nor reproduced.