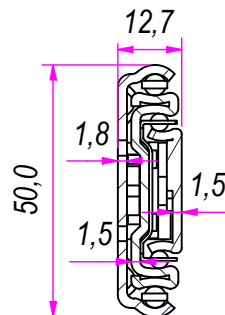
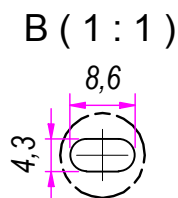
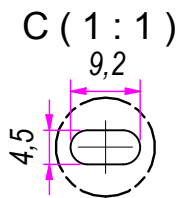


A →

SEZ. A-A



DESIGNED BY F. Dino	CHECKED AND APPROVED BY L. Paleari	GENERAL TOLLERANCE SS-ISO-2768-1M	DATE 10/05/2018	CODE LE51350
PACKAGING Carton 10 sets/Packed R+L			UNIT mm	SHEET 1 of 2
DESCRIPTION Lock-in and Lock-out			MATERIAL Cold rolled steel	
			PAIR WEIGHT 1,508 Kg	02C

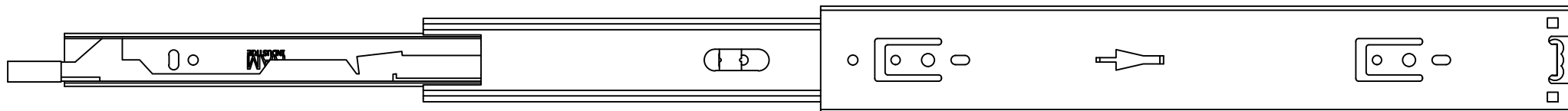
RAM
INDUSTRIE

REVISION HISTORY		DATE
REV	DESCRIPTION	DATE
1a		10/05/2018

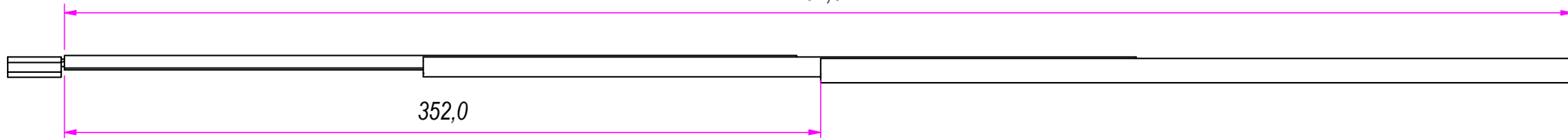
Property of RAM Industrie.
Without its written authorization the present drawing shall neither be used for construction anyway, communicated to third parties, nor reproduced.

Guide per cassetti; guide telescopiche
Drawer slide; telescopic ball bearing slide
Kugelführung; Teleskopschienen

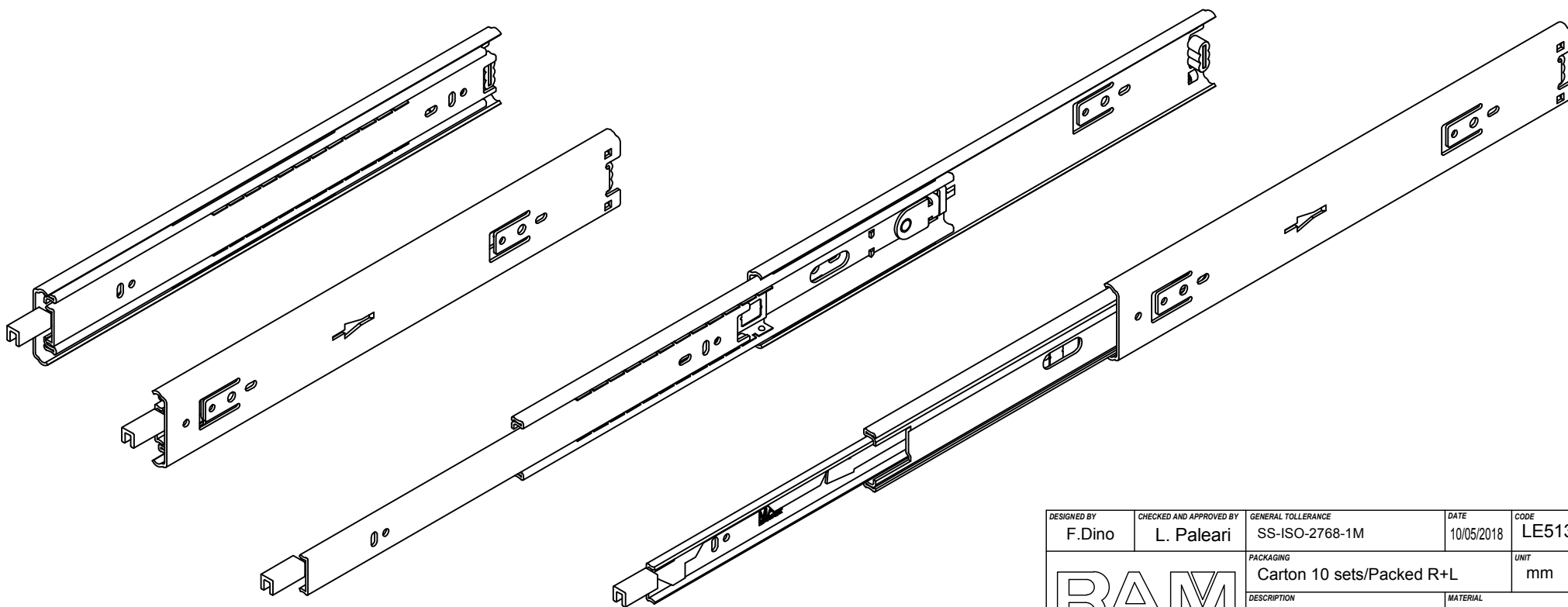
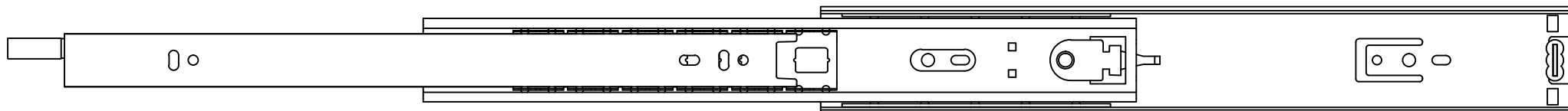
Coulisses à billes; coulisse télescopique
Guías para cajones; guía teleópica



702,0



352,0



Guide per cassetti; guide telescopica	Coulisses à billes; coulisse télescopique
Drawer slide; telescopic ball bearing slide	Guías para cajones; guía teleópica
Kugelführung; Teleskopschienen	

REVISION HISTORY	
REV	DESCRIPTION
1a	

DESIGNED BY F. Dino	CHECKED AND APPROVED BY L. Paleari	GENERAL TOLERANCE SS-ISO-2768-1M	DATE 10/05/2018	CODE LE51350
PACKAGING Carton 10 sets/Packed R+L			UNIT mm	SHEET 2 of 2
DESCRIPTION Lock-in and Lock-out			MATERIAL Cold rolled steel	
			PAIR WEIGHT 1,508 Kg	02C

RAM
INDUSTRIE

Property of RAM Industrie.
Without its written authorization the present drawing shall neither be used for construction anyway, communicated to third parties, nor reproduced.