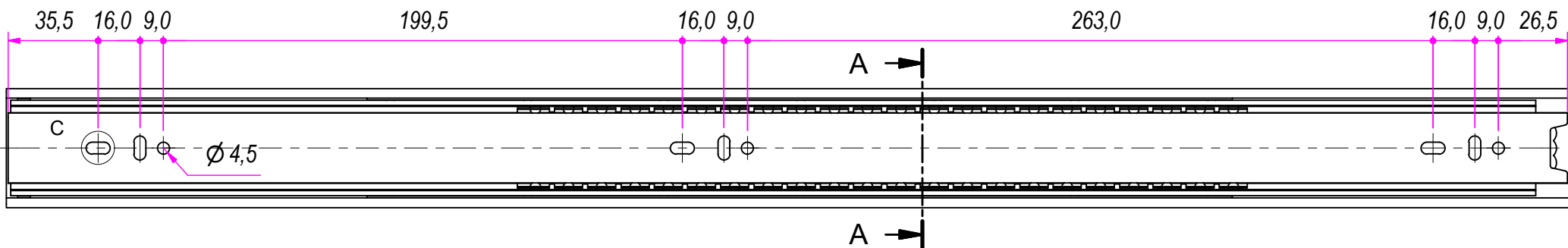
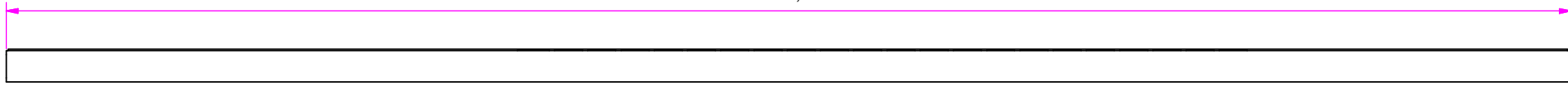
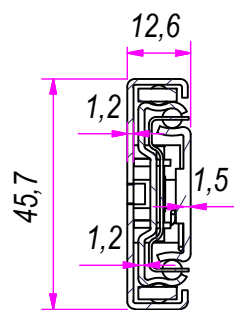


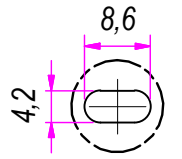
600,0



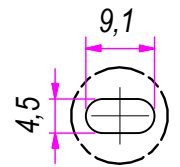
SEZ. A-A



B (1:1)

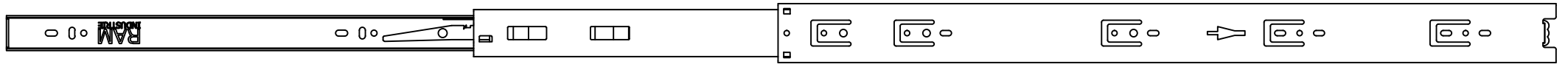


C (1:1)

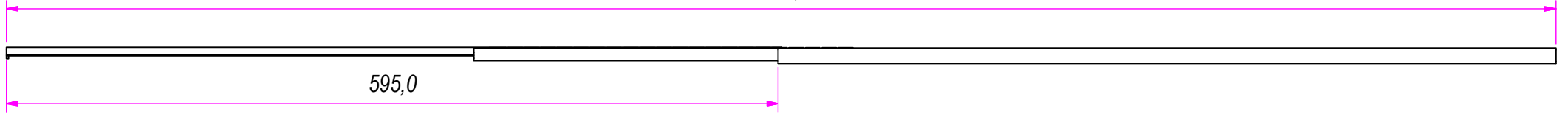


| | | | | |
|--------------------------------------|---------------------------------------|----------|-------------------------------|-----------------|
| DESIGNED BY F.Dino | CHECKED AND APPROVED BY L. Paleari | REVISION | DATE 09/05/2016 | CODE LO48600 |
| GENERAL TOLLERANCE SS-ISO-2768-1M | | | UNIT mm | SCALE 1 of 2 |
| DESCRIPTION Lock-out | | | MATERIAL Cold rolled steel | |
| DEVICE | | | PAIR WEIGHT 1,888 Kg | 02C |

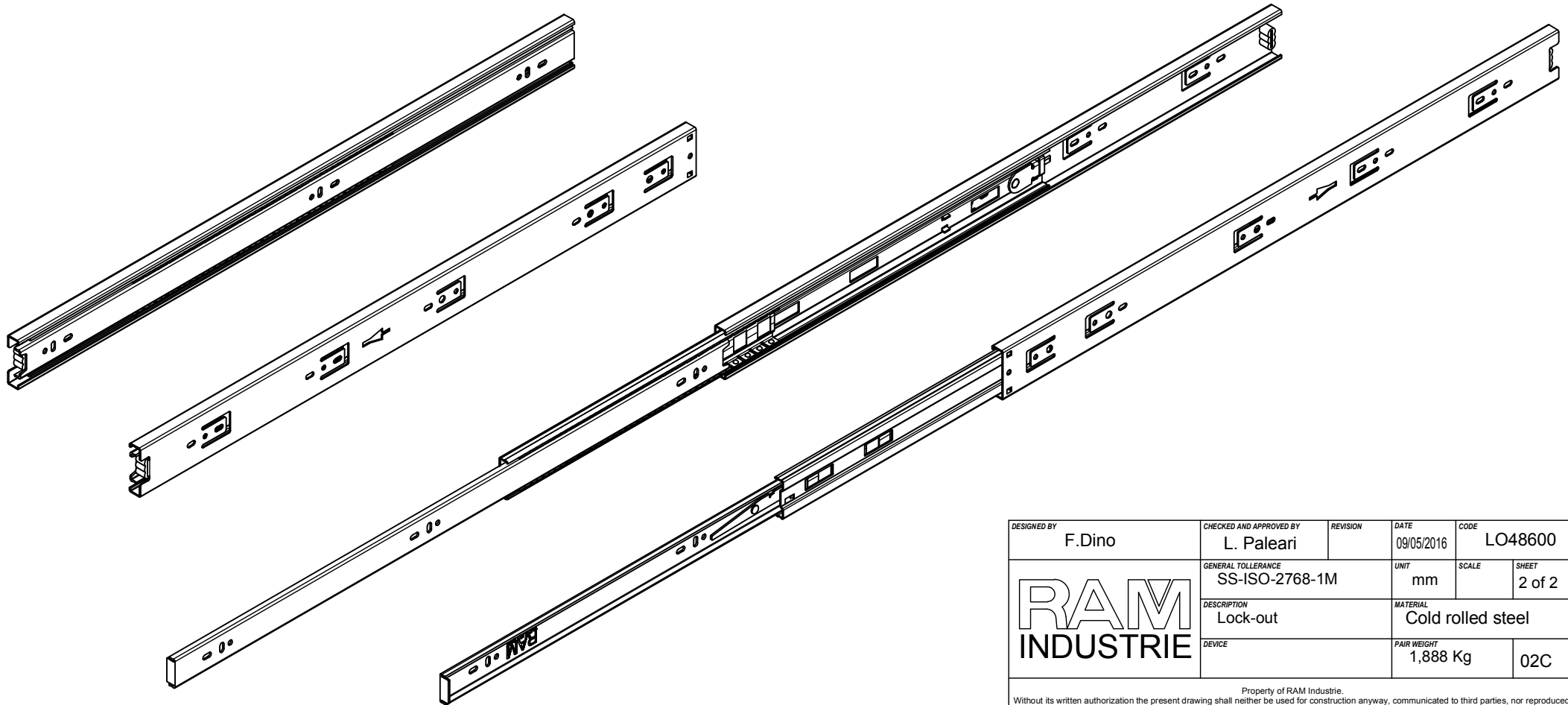
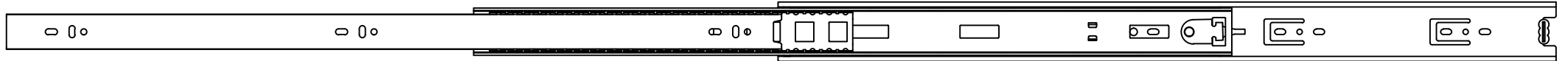
Property of RAM Industrie.
Without its written authorization the present drawing shall neither be used for construction anyway, communicated to third parties, nor reproduced.




1195,0



595,0



| | | | | |
|---------------------------------------------------------------------------------------|---------------------------------------|--------------------------------------|-------------------------------|--------------------------|
| DESIGNED BY F.Dino | CHECKED AND APPROVED BY L. Paleari | REVISION | DATE 09/05/2016 | CODE LO48600 |
|  | | GENERAL TOLLERANCE SS-ISO-2768-1M | UNIT mm | SCALE SHEET 2 of 2 |
| | | DESCRIPTION Lock-out | MATERIAL Cold rolled steel | |
| DEVICE | | PAIR WEIGHT 1,888 Kg | 02C | |

Property of RAM Industrie.
Without its written authorization the present drawing shall neither be used for construction anyway, communicated to third parties, nor reproduced.