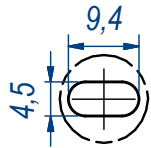
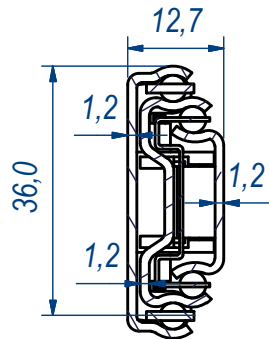
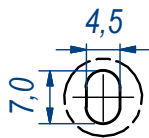



SEZ. A-A

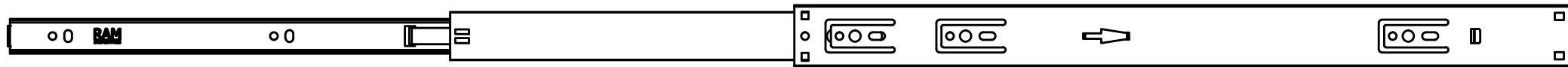
B (1:1)



E (1:1)

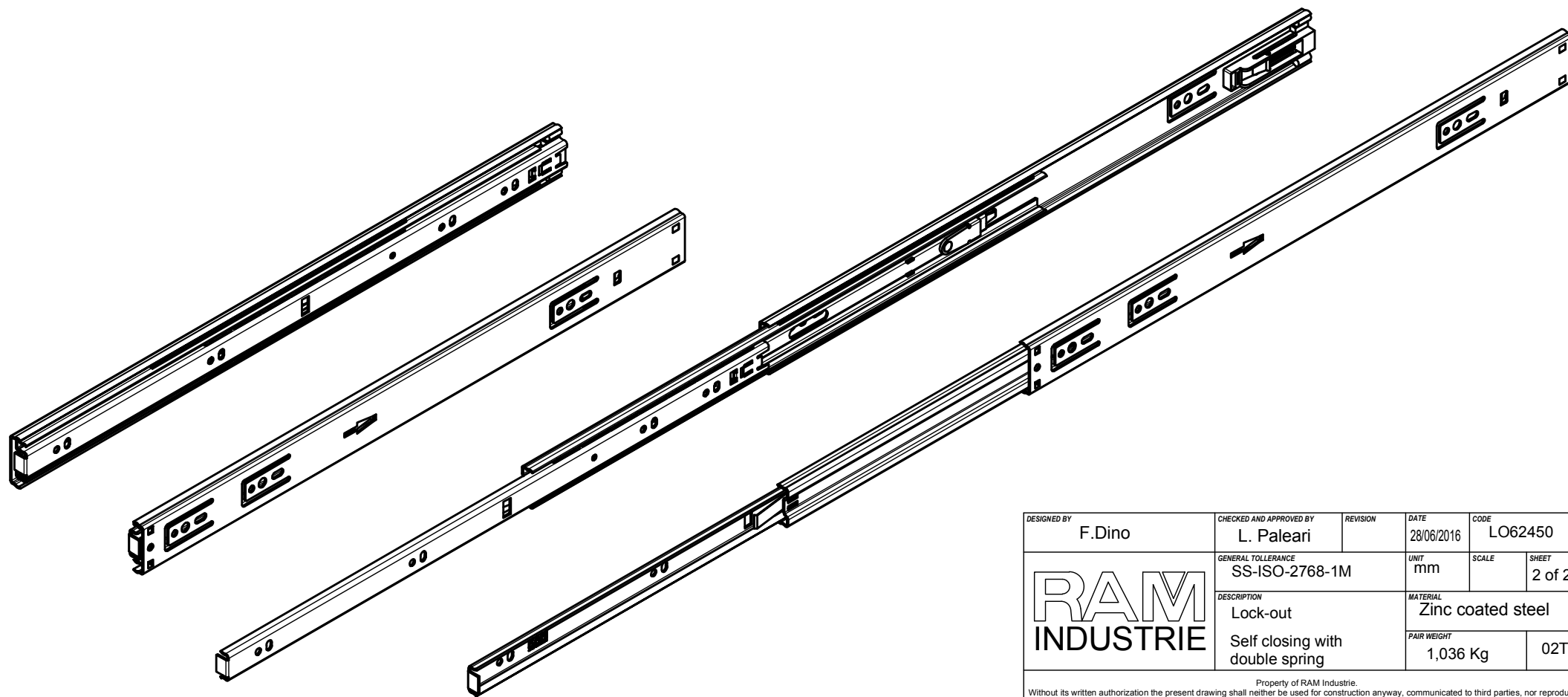



| | | | | |
|---|---------------------------------------|---------------------------------|--------------------|-------------------------------|
| DESIGNED BY F.Dino | CHECKED AND APPROVED BY L. Paleari | REVISION | DATE 28/06/2016 | CODE LO62450 |
| GENERAL TOLLERANCE SS-ISO-2768-1M | | UNIT mm | SCALE | SHEET 1 of 2 |
|  | | DESCRIPTION Lock-out | | MATERIAL Zinc coated steel |
| | | Self closing with double spring | | PAIR WEIGHT 1,036 Kg |
| <small>Property of RAM Industrie. Without its written authorization the present drawing shall neither be used for construction anyway, communicated to third parties, nor reproduced.</small> | | | | |



906,0

456,0



| | | | | |
|---|---------------------------------------|---|-------------------------------|--------------------------|
| DESIGNED BY F.Dino | CHECKED AND APPROVED BY L. Paleari | REVISION | DATE 28/06/2016 | CODE LO62450 |
|  | | GENERAL TOLLERANCE SS-ISO-2768-1M | UNIT mm | SCALE SHEET 2 of 2 |
| | | DESCRIPTION Lock-out Self closing with double spring | MATERIAL Zinc coated steel | PAIR WEIGHT 1,036 Kg |
| <small>Property of RAM Industrie. Without its written authorization the present drawing shall neither be used for construction anyway, communicated to third parties, nor reproduced.</small> | | | | |