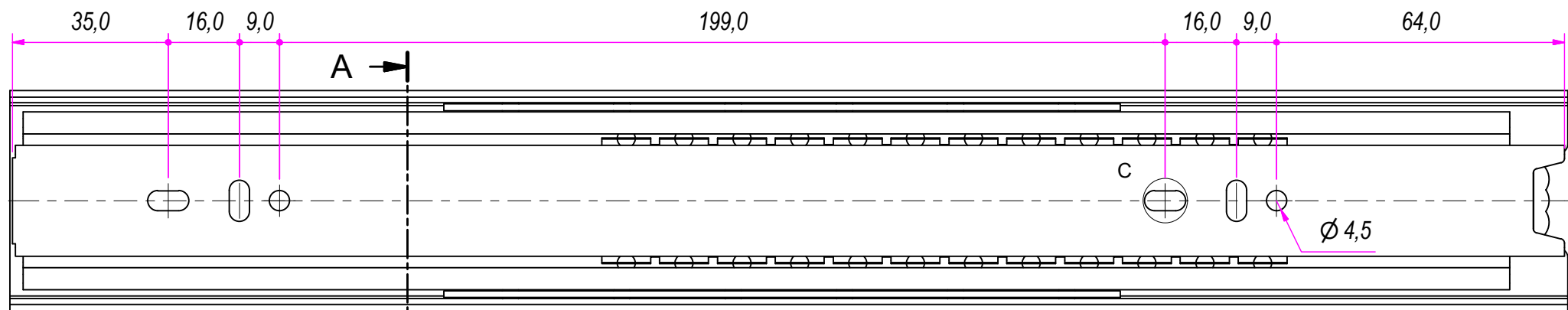


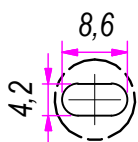
350,0



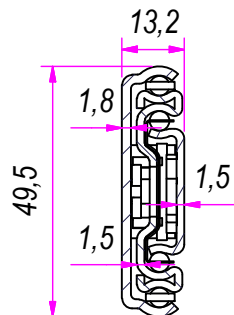
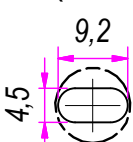
A →

SEZ. A-A

B (1:1)



C (1:1)



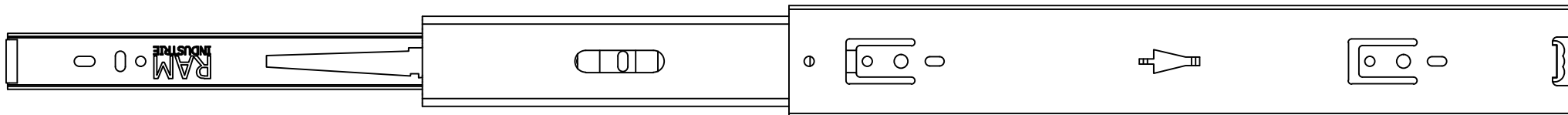
DESIGNED BY F. Dino	CHECKED AND APPROVED BY L. Paleari	GENERAL TOLLERANCE SS-ISO-2768-1M	DATE 08/06/2017	CODE LOS51350
PACKAGING Carton 10 sets/Packed R+R			UNIT mm	SHEET 1 of 2
DESCRIPTION Soft lock-out			MATERIAL Cold rolled steel	
			PAIR WEIGHT 1,472 Kg	02C

RAM
INDUSTRIE

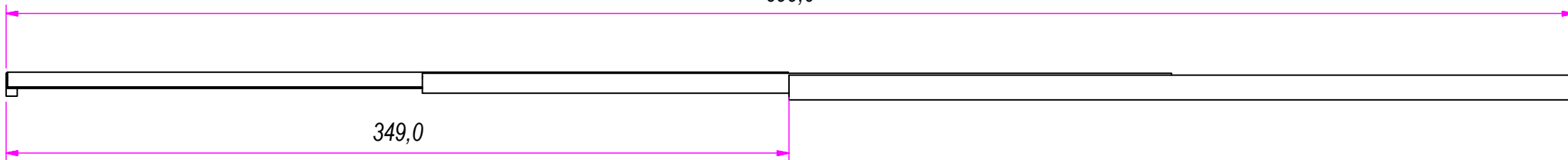
Property of RAM Industrie.

Without its written authorization the present drawing shall neither be used for construction anyway, communicated to third parties, nor reproduced.

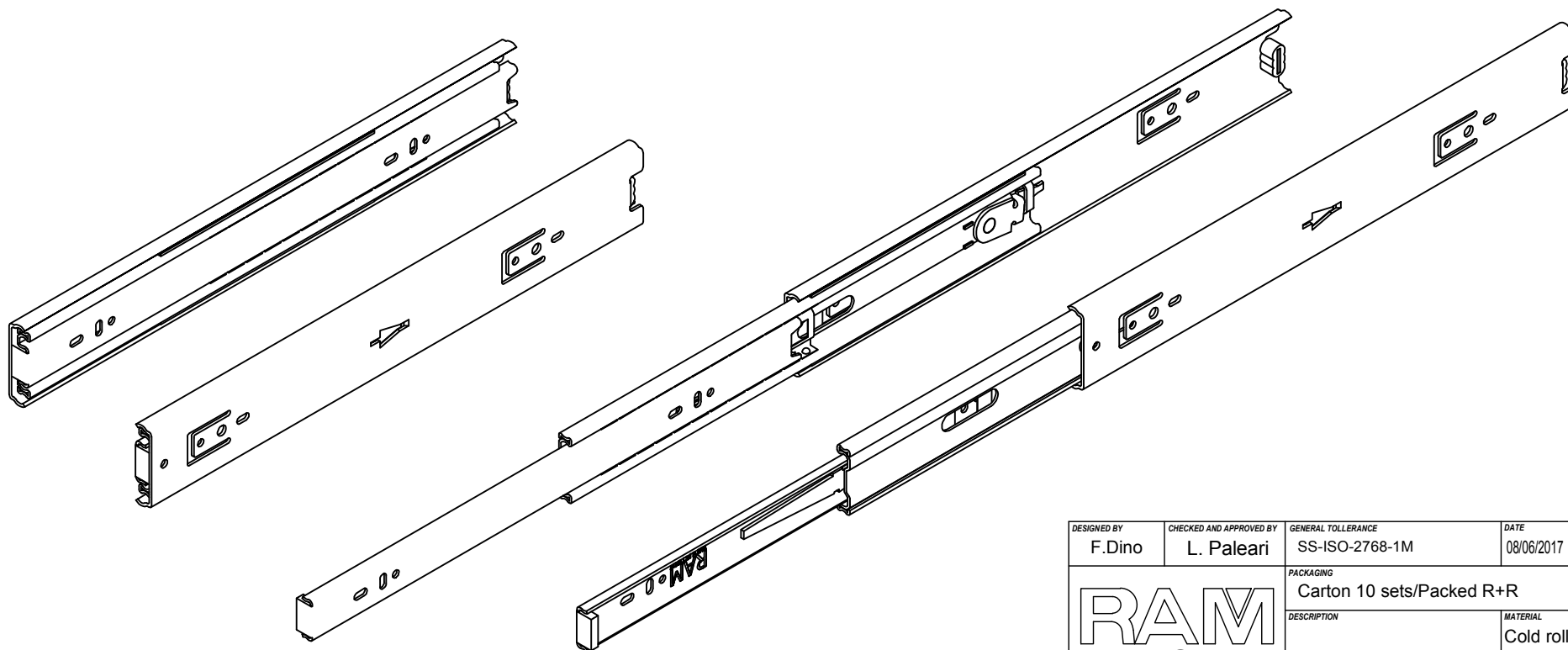
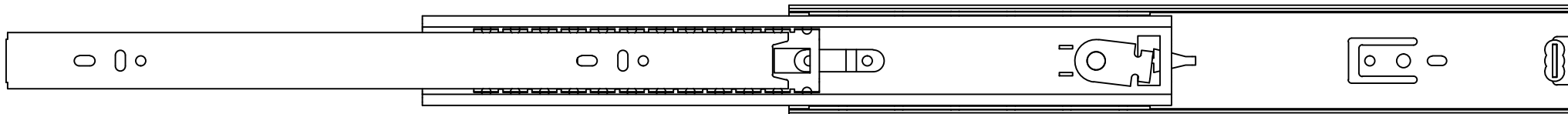
		REVISION HISTORY		
		REV	DESCRIPTION	DATE
Guide per cassette; guide telescopiche	Coulisses à billes; coulisse télescopique			
Drawer slide; telescopic ball bearing slide	Guías para cajones; guía teleópica	1a		08/06/2017
Kugelführung; Teleskopschienen				



699,0



349,0



Guide per cassetti; guide telescopica	Coulisses à billes; coulisse télescopique
Drawer slide; telescopic ball bearing slide	Guías para cajones; guía teleópica
Kugelführung; Teleskopschienen	

REVISION HISTORY	
REV	DESCRIPTION
1a	

DESIGNED BY F. Dino	CHECKED AND APPROVED BY L. Paleari	GENERAL TOLERANCE SS-ISO-2768-1M	DATE 08/06/2017	CODE LOS51350
		PACKAGING Carton 10 sets/Packed R+R	UNIT mm	SHEET 2 of 2
		DESCRIPTION Soft lock-out	MATERIAL Cold rolled steel	
		PAIR WEIGHT 1,472 Kg	02C	
Property of RAM Industrie. Without its written authorization the present drawing shall neither be used for construction anyway, communicated to third parties, nor reproduced.				