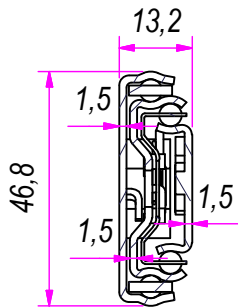
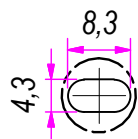


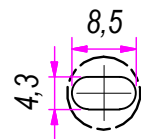
SEZ. A-A



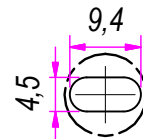
B (1:1)



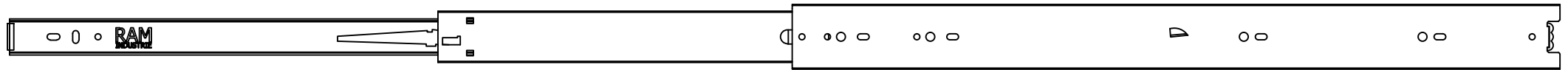
C (1:1)



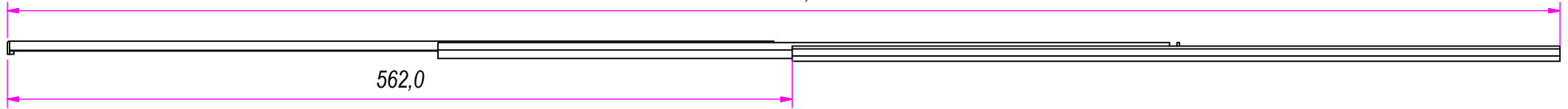
D (1:1)



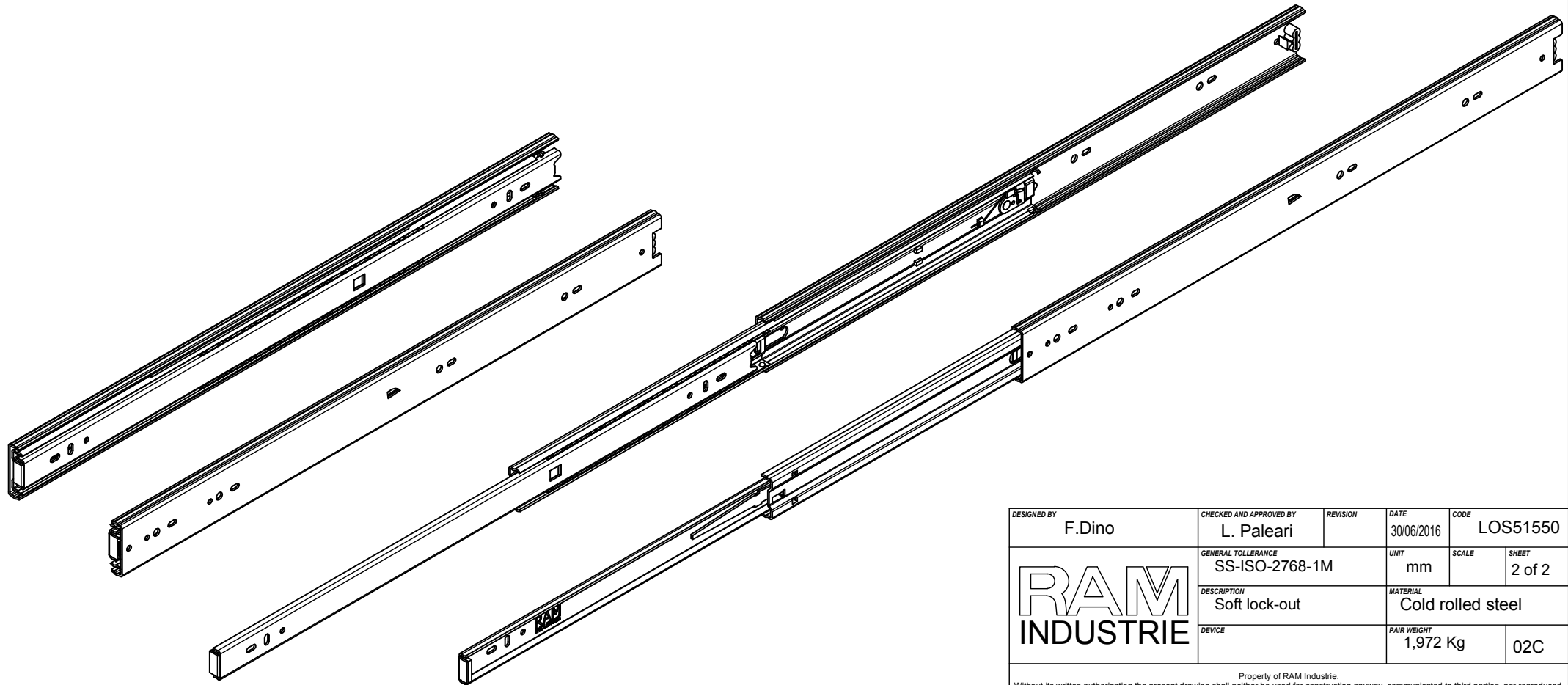
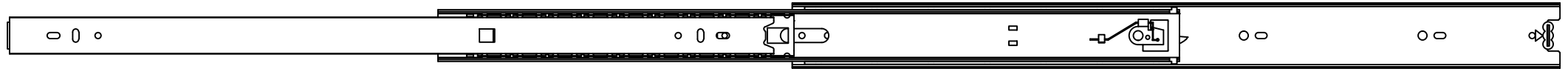
DESIGNED BY F.Dino	CHECKED AND APPROVED BY L. Paleari	REVISION	DATE 30/06/2016	CODE LOS51550
GENERAL TOLERANCE SS-ISO-2768-1M			UNIT mm	SCALE 1 of 2
DESCRIPTION Soft lock-out			MATERIAL Cold rolled steel	
DEVICE			PAIR WEIGHT 1,972 Kg	02C



1112,0



562,0



DESIGNED BY F.Dino	CHECKED AND APPROVED BY L. Paleari	REVISION	DATE 30/06/2016	CODE LOS51550
GENERAL TOLLERANCE SS-ISO-2768-1M			UNIT mm	SCALE SHEET 2 of 2
DESCRIPTION Soft lock-out			MATERIAL Cold rolled steel	
DEVICE			PAIR WEIGHT 1,972 Kg	02C

Property of RAM Industrie.  
Without its written authorization the present drawing shall neither be used for construction anyway, communicated to third parties, nor reproduced.