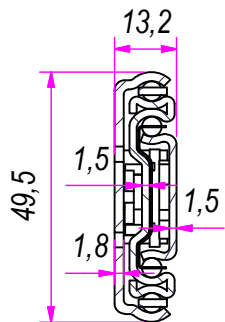
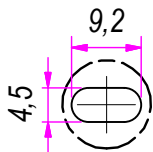


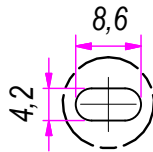
SEZ. A-A



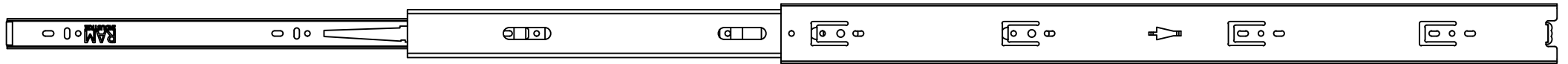
C (1:1)



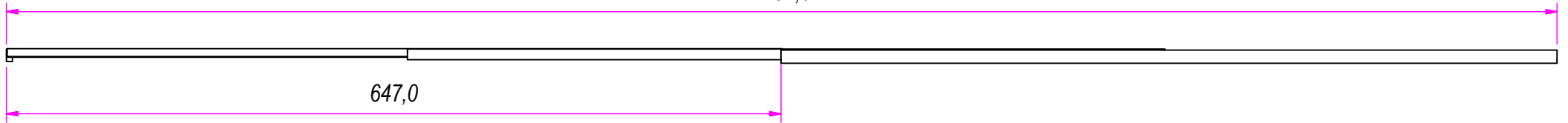
B (1:1)



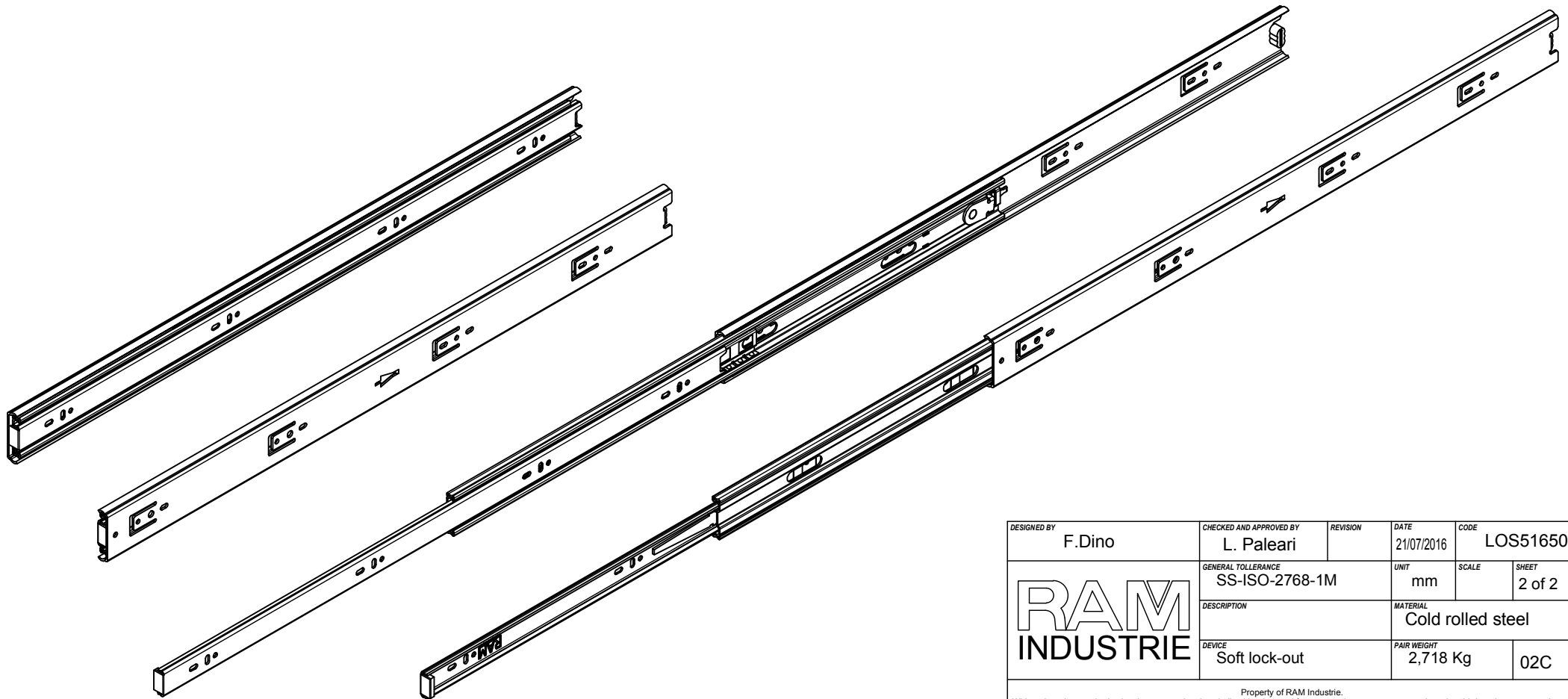
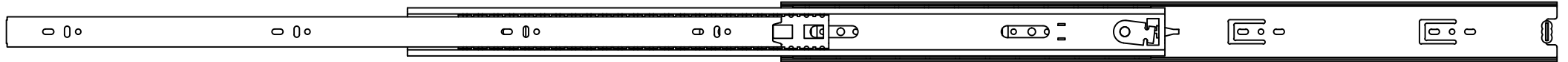
DESIGNED BY F.Dino	CHECKED AND APPROVED BY L. Paleari	REVISION	DATE 21/07/2016	CODE LOS51650
GENERAL TOLLERANCE SS-ISO-2768-1M			UNIT mm	SCALE 1 of 2
DESCRIPTION Soft lock-out			MATERIAL Cold rolled steel	
PAIR WEIGHT 2,718 Kg			02C	



1297,0



647,0



DESIGNED BY F.Dino	CHECKED AND APPROVED BY L. Paleari	REVISION	DATE 21/07/2016	CODE LOS51650
GENERAL TOLLERANCE SS-ISO-2768-1M		UNIT mm	SCALE	SHEET 2 of 2
DESCRIPTION Soft lock-out			MATERIAL Cold rolled steel	
PAIR WEIGHT 2,718 Kg			02C	

Property of RAM Industrie.  
Without its written authorization the present drawing shall neither be used for construction anyway, communicated to third parties, nor reproduced.