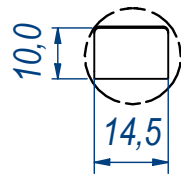
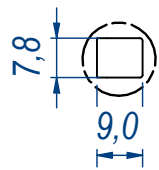
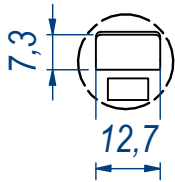


B (1 : 1,5)

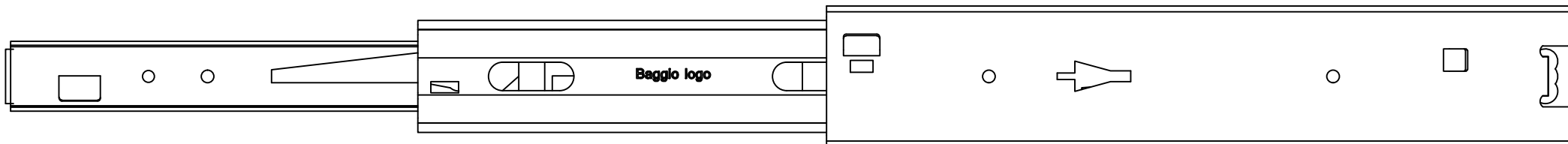
C (1 : 1,5)

D (1 : 1,5)

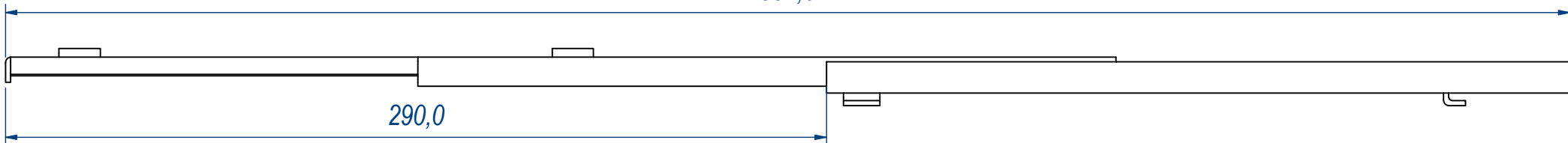


DESIGNED BY F.Dino	CHECKED AND APPROVED BY L. Paleari	REVISION	DATE 08/02/2016	CODE LOS52262
GENERAL TOLLERANCE SS-ISO-2768-1M		UNIT mm	SCALE	SHEET 1 of 2
DESCRIPTION Soft lock-out		MATERIAL Zinc coated steel		
PAIR WEIGHT 1,112 Kg		02C		

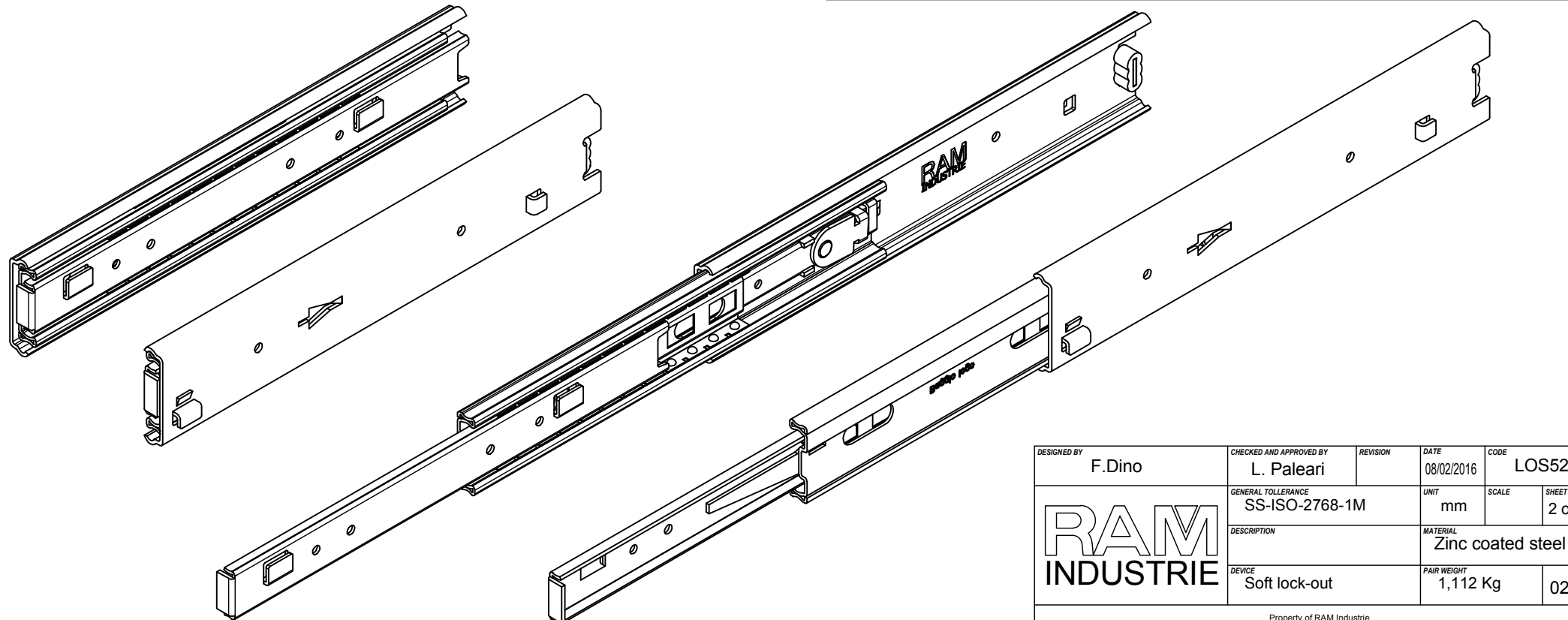
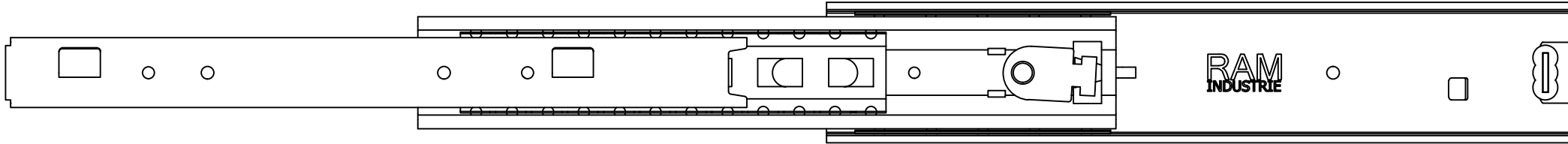
Property of RAM Industrie.
Without its written authorization the present drawing shall neither be used for construction anyway, communicated to third parties, nor reproduced.




552,0



290,0



DESIGNED BY F.Dino	CHECKED AND APPROVED BY L. Paleari	REVISION	DATE 08/02/2016	CODE LOS52262
		GENERAL TOLLERANCE SS-ISO-2768-1M	UNIT mm	SCALE SHEET 2 of 2
		DESCRIPTION Soft lock-out	MATERIAL Zinc coated steel	PAIR WEIGHT 1,112 Kg

Property of RAM Industrie.
Without its written authorization the present drawing shall neither be used for construction anyway, communicated to third parties, nor reproduced.