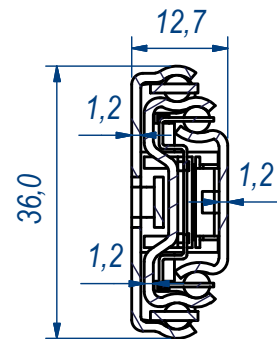
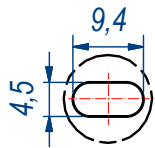


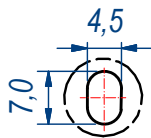
SEZ. A-A




B (1:1)

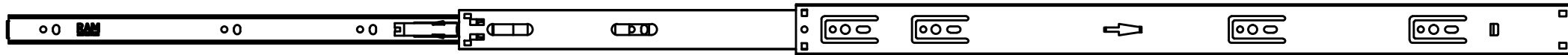


C (1:1)

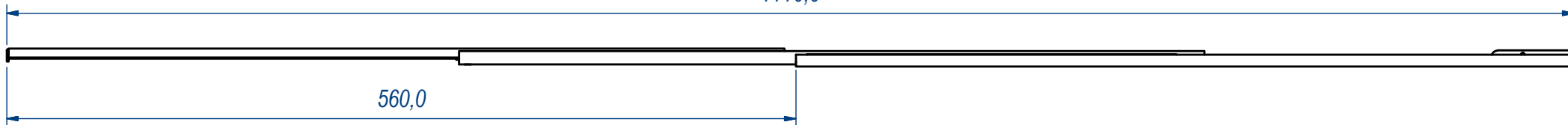


DESIGNED BY F.Dino	CHECKED AND APPROVED BY L. Paleari	REVISION	DATE 14/07/2016	CODE LOS62550
GENERAL TOLLERANCE SS-ISO-2768-1M		UNIT mm	SCALE	SHEET 1 of 2
		DESCRIPTION Soft lock-out		
		MATERIAL Zinc coated steel		
Self closing with double spring		PAIR WEIGHT 1,244 Kg	02T	

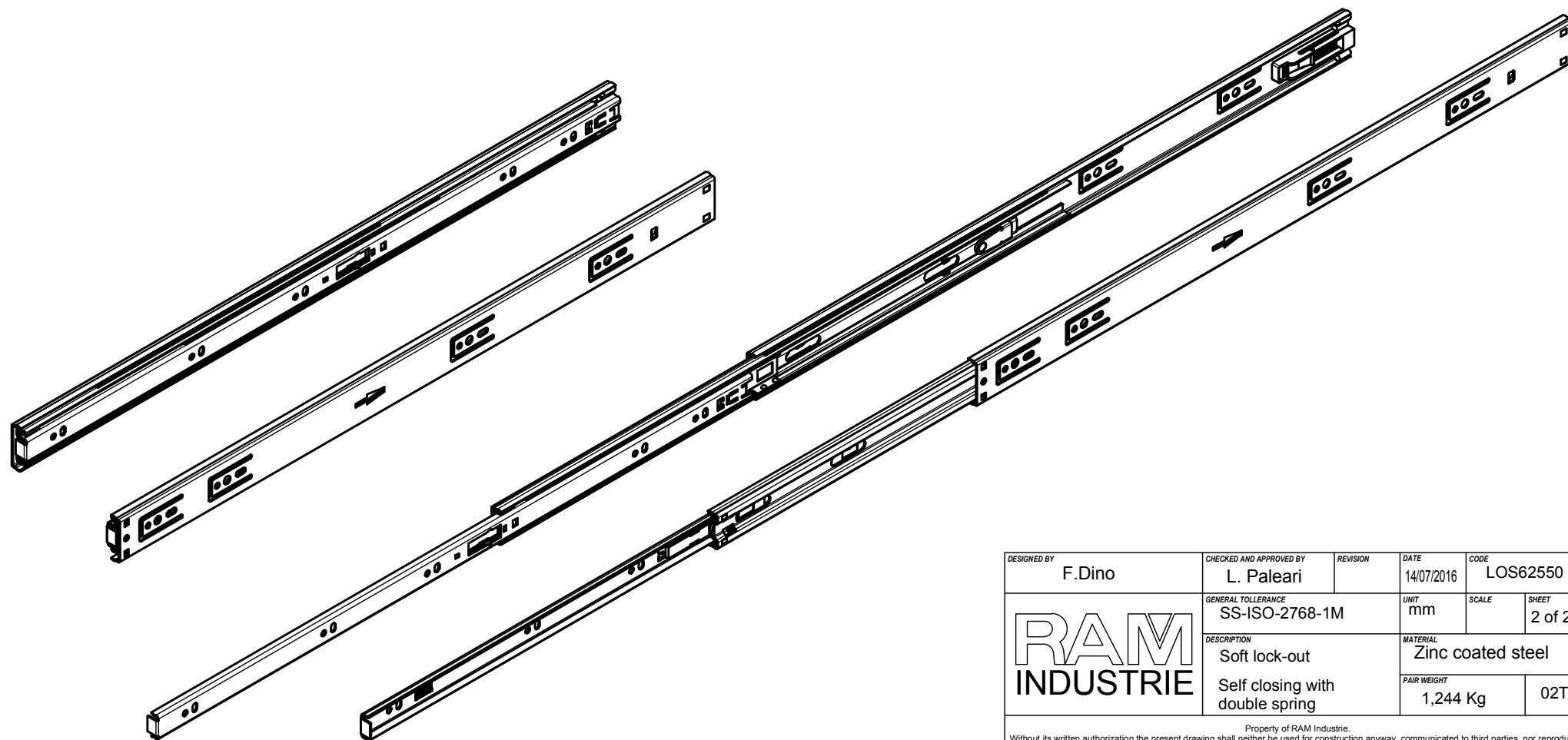
Property of RAM Industrie.  
Without its written authorization the present drawing shall neither be used for construction anyway, communicated to third parties, nor reproduced.




1110,0



560,0



DESIGNED BY F.Dino	CHECKED AND APPROVED BY L. Paleari	REVISION	DATE 14/07/2016	CODE LOS62550
		GENERAL TOLLERANCE SS-ISO-2768-1M	UNIT mm	SCALE SHEET 2 of 2
		DESCRIPTION Soft lock-out Self closing with double spring	MATERIAL Zinc coated steel	PAIR WEIGHT 1,244 Kg

Property of RAM Industrie.  
Without its written authorization the present drawing shall neither be used for construction anyway, communicated to third parties, nor reproduced.