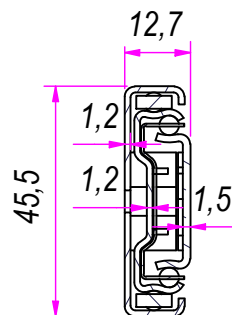
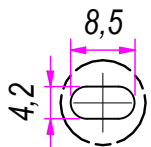


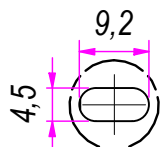
SEZ. A-A




B (1:1)

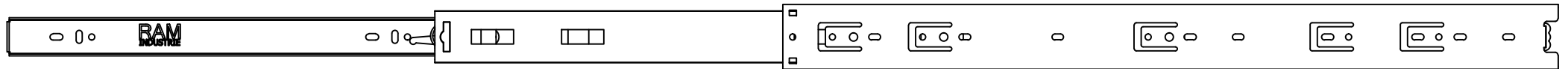


C (1:1)

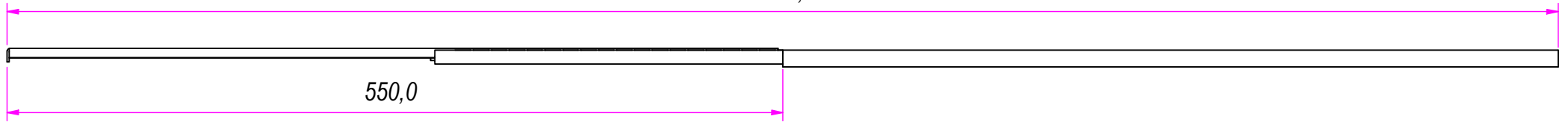


REVISION HISTORY		
REV	DESCRIPTION	DATE
1	Added 2 slotted holes (17-28)	01/02/2018
2	Eliminated slotted hole (17-32)	01/06/2018
3	Added slotted hole (18-15)	11/01/2019
4	Eliminated REV 3 (20-186)	06/07/2021

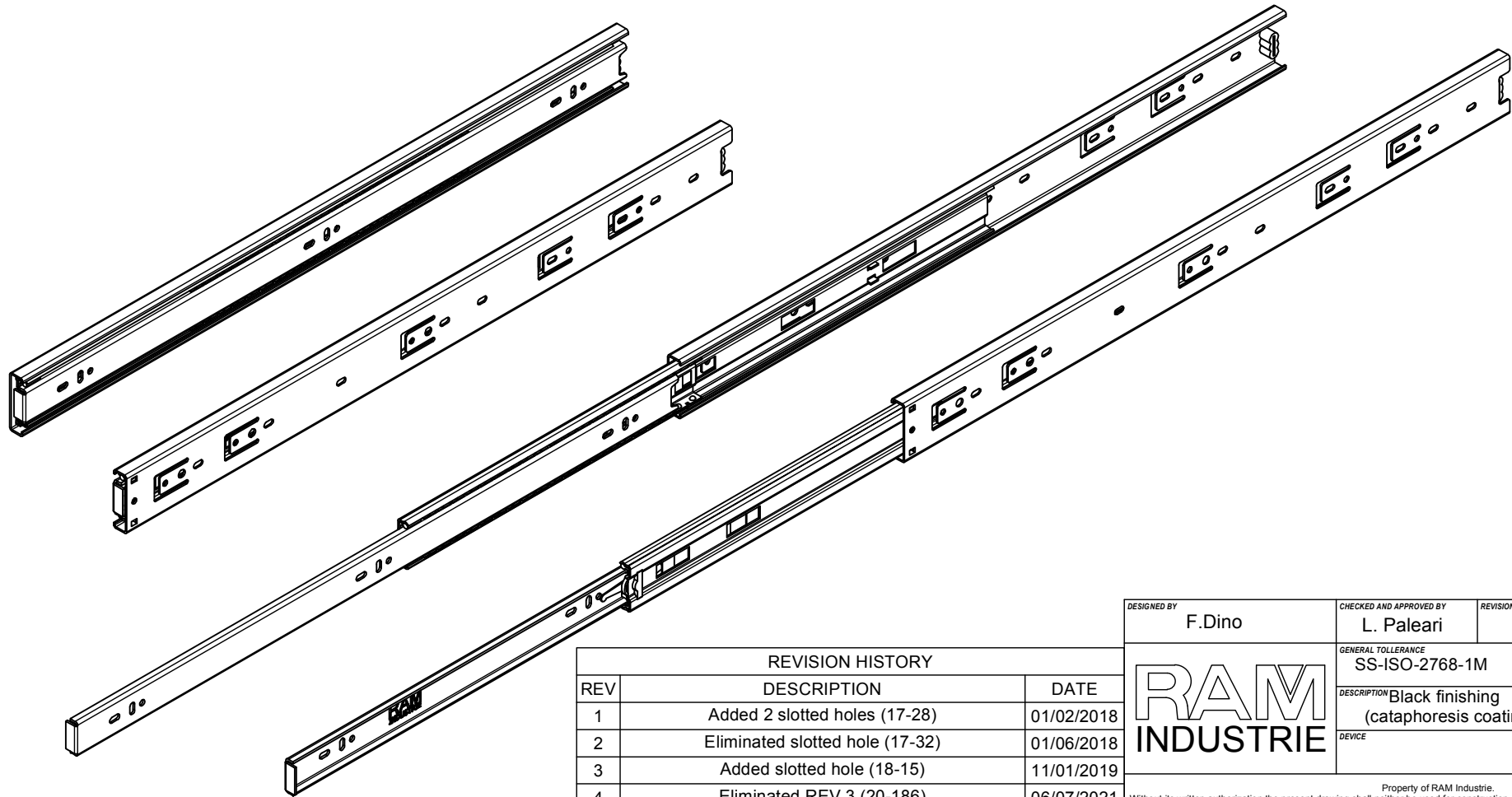
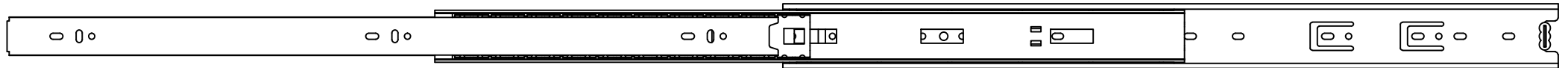
DESIGNED BY F.Dino	CHECKED AND APPROVED BY L. Paleari	REVISION	DATE 15/06/2016	CODE NE48550
		GENERAL TOLERANCE SS-ISO-2768-1M	UNIT mm	SCALE 1 of 2
		DESCRIPTION Black finishing (cataphoresis coating)	MATERIAL Cold rolled steel	
			PAIR WEIGHT 1,686 Kg	02C
<small>Property of RAM Industrie. Without its written authorization the present drawing shall neither be used for construction anyway, communicated to third parties, nor reproduced.</small>				




1100,0



550,0



REVISION HISTORY		
REV	DESCRIPTION	DATE
1	Added 2 slotted holes (17-28)	01/02/2018
2	Eliminated slotted hole (17-32)	01/06/2018
3	Added slotted hole (18-15)	11/01/2019
4	Eliminated REV 3 (20-186)	06/07/2021

DESIGNED BY F.Dino	CHECKED AND APPROVED BY L. Paleari	REVISION	DATE 15/06/2016	CODE NE48550
		GENERAL TOLERANCE SS-ISO-2768-1M	UNIT mm	SCALE SHEET 2 of 2
		DESCRIPTION Black finishing (cataphoresis coating)	MATERIAL Cold rolled steel	PAIR WEIGHT 1,686 Kg
<small>Property of RAM Industrie. Without its written authorization the present drawing shall neither be used for construction anyway, communicated to third parties, nor reproduced.</small>				