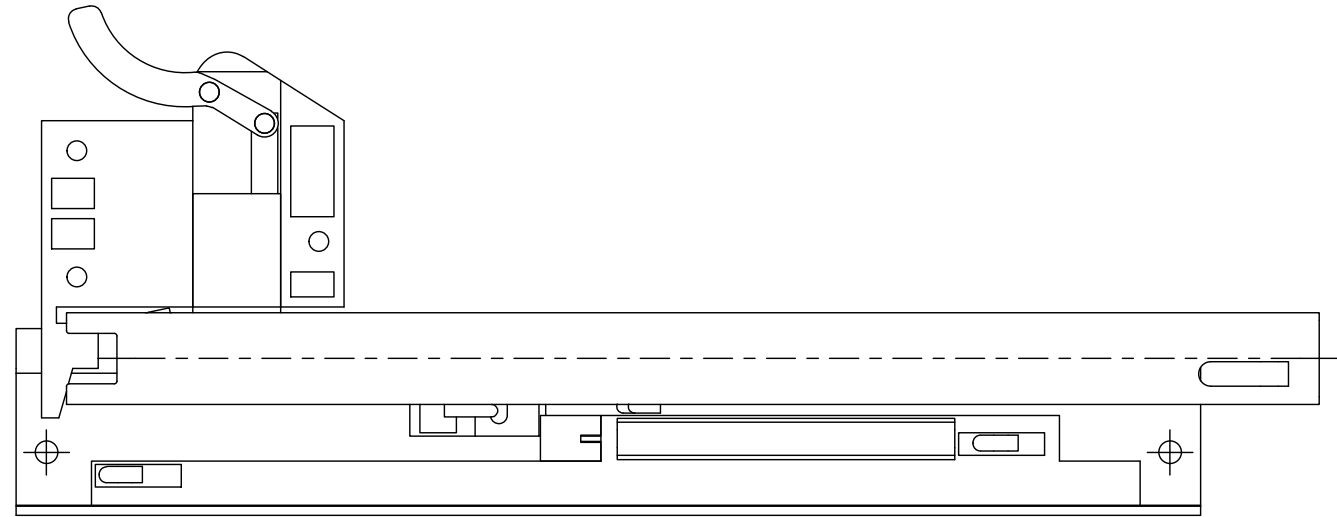
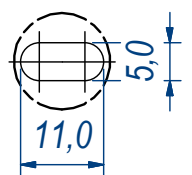
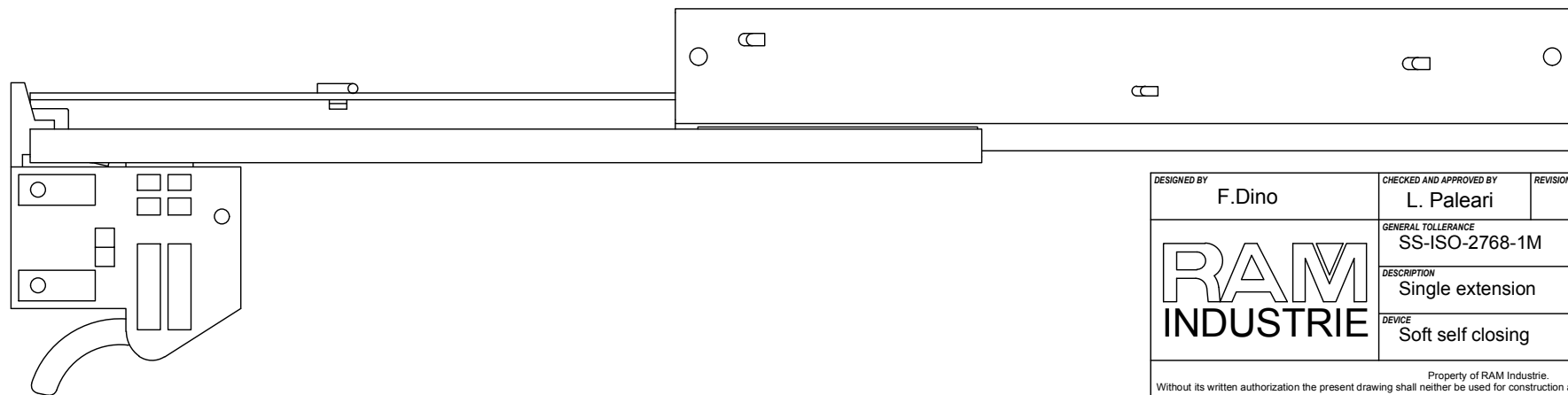
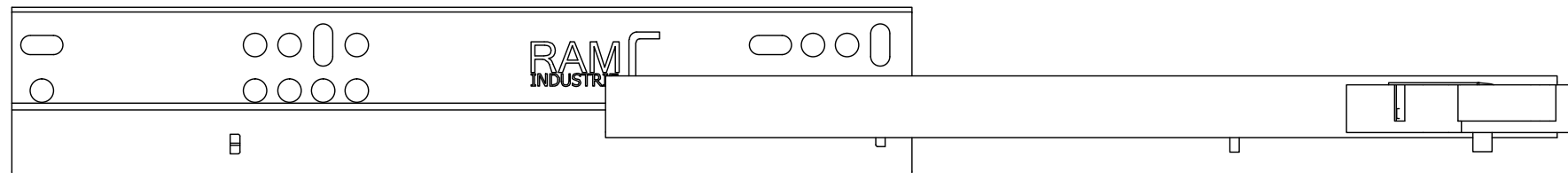
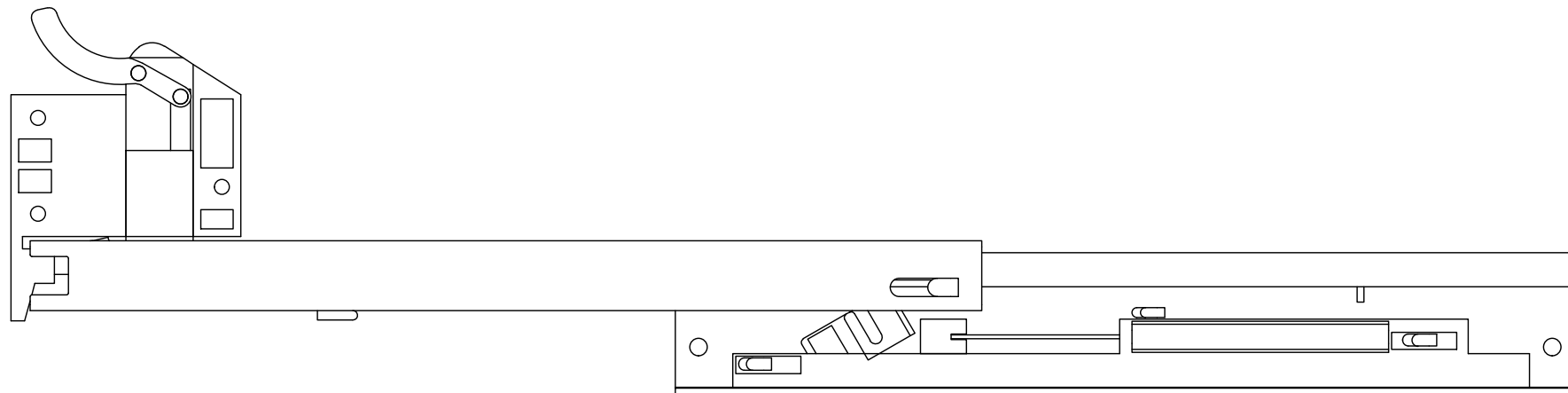
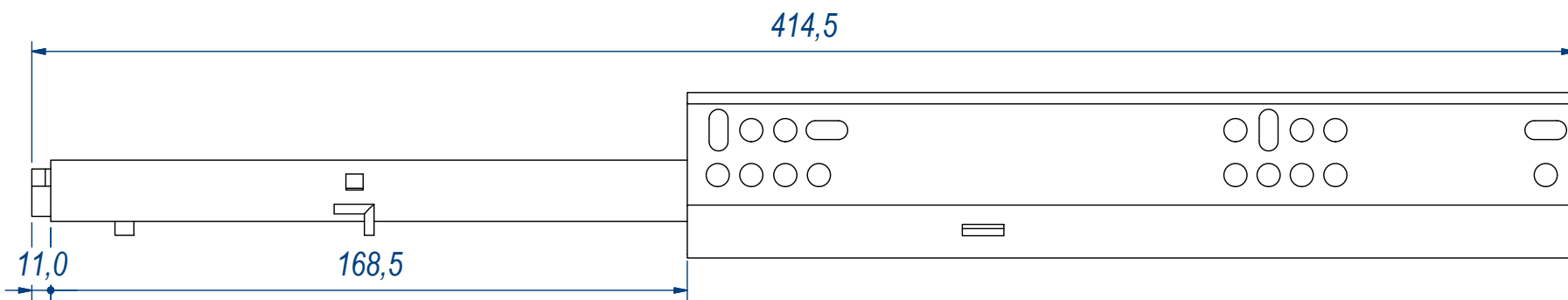


B (1:1)

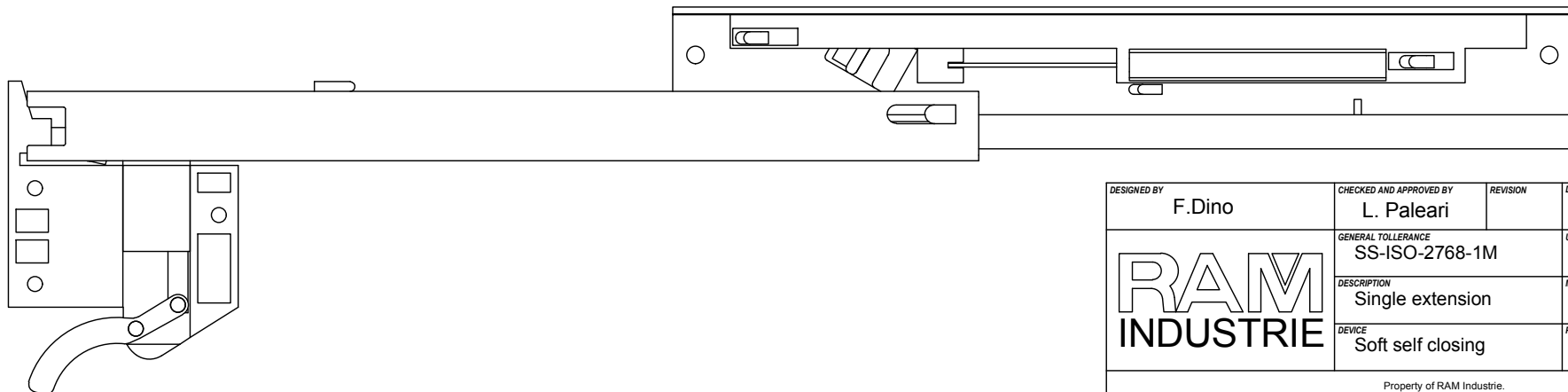
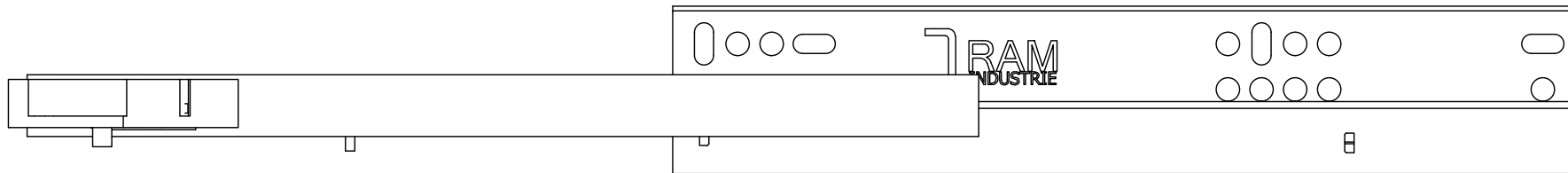
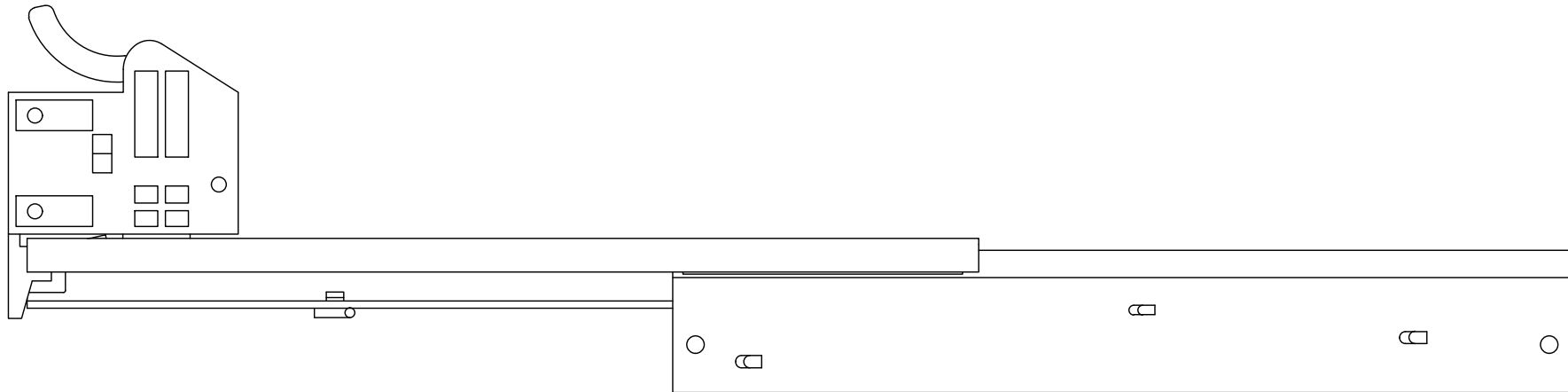
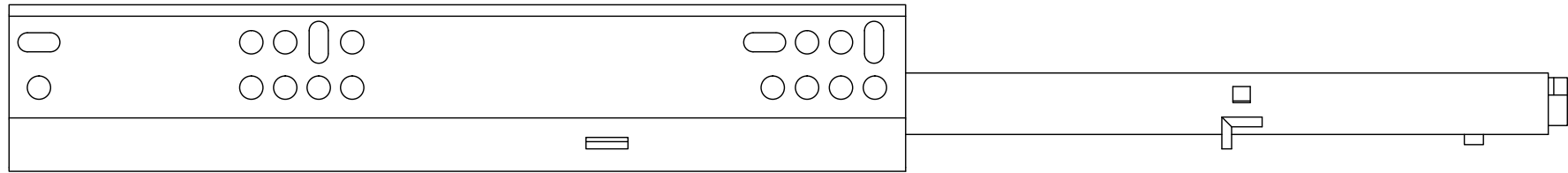


DESIGNED BY F.Dino	CHECKED AND APPROVED BY L. Paleari	REVISION	DATE 12/02/2016	CODE Q16250
		GENERAL TOLLERANCE SS-ISO-2768-1M	UNIT mm	SCALE SHEET 1 of 3
		DESCRIPTION Single extension	MATERIAL Cold rolled steel	
DEVICE Soft self closing		PAIR WEIGHT 0,435 Kg	04C	
<small>Property of RAM Industrie. Without its written authorization the present drawing shall neither be used for construction anyway, communicated to third parties, nor reproduced.</small>				



DESIGNED BY F.Dino	CHECKED AND APPROVED BY L. Paleari	REVISION	DATE 12/02/2016	CODE Q16250
GENERAL TOLLERANCE SS-ISO-2768-1M			UNIT mm	SCALE SHEET 2 of 3
DESCRIPTION Single extension			MATERIAL Cold rolled steel	
DEVICE Soft self closing			PAIR WEIGHT 0,435 kg	04C

Property of RAM Industrie.
Without its written authorization the present drawing shall neither be used for construction anyway, communicated to third parties, nor reproduced.



DESIGNED BY F.Dino	CHECKED AND APPROVED BY L. Paleari	REVISION	DATE 12/02/2016	CODE Q16250
GENERAL TOLLERANCE SS-ISO-2768-1M			UNIT mm	SCALE 3 of 3
DESCRIPTION Single extension			MATERIAL Cold rolled steel	
DEVICE Soft self closing			PAIR WEIGHT 0,435 Kg	04C

RAM
INDUSTRIE

Property of RAM Industrie.
Without its written authorization the present drawing shall neither be used for construction anyway, communicated to third parties, nor reproduced.