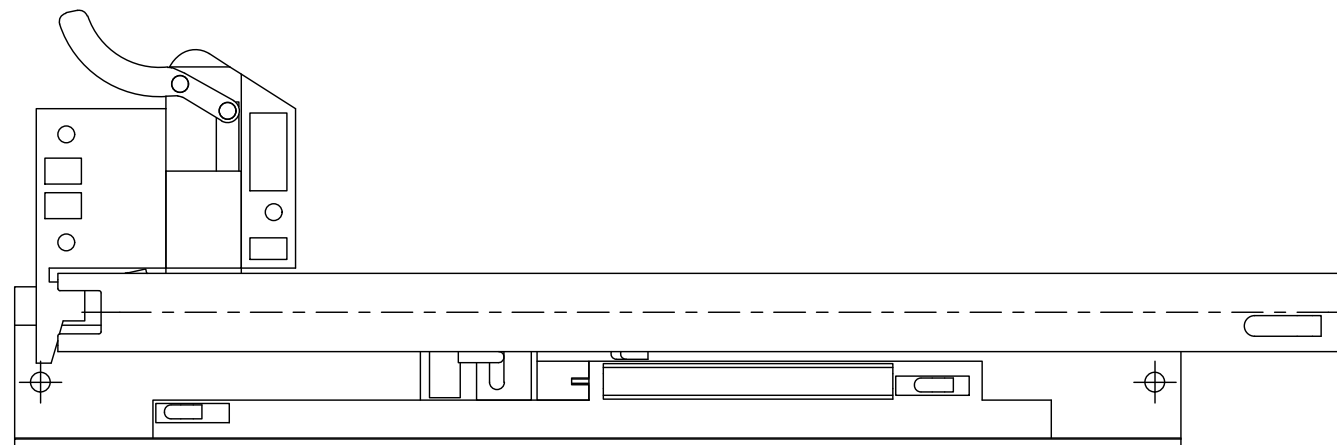
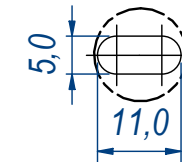
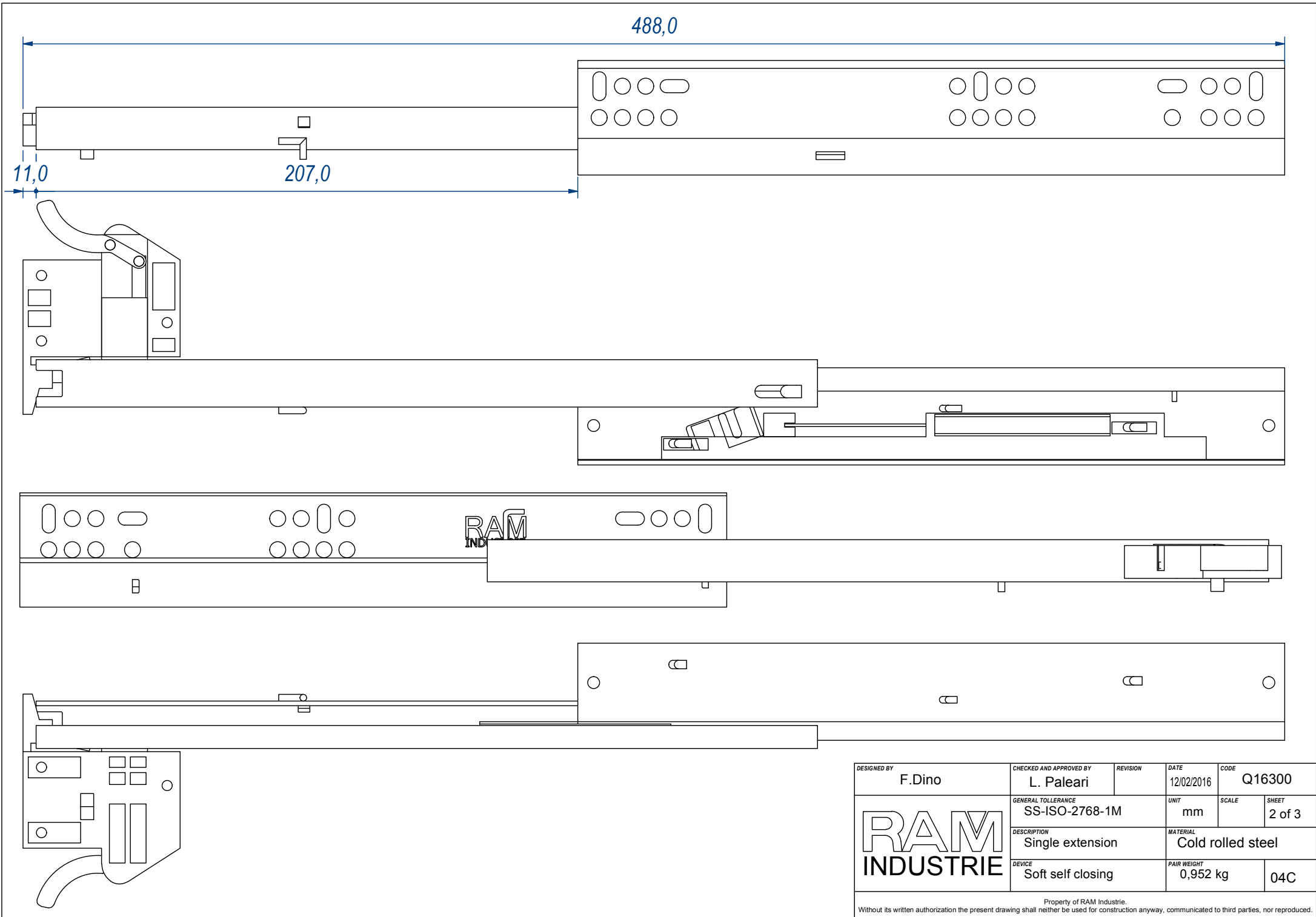


B (1 : 1)

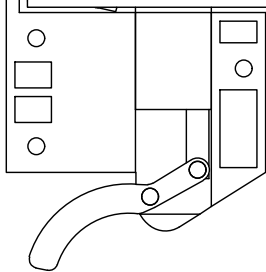
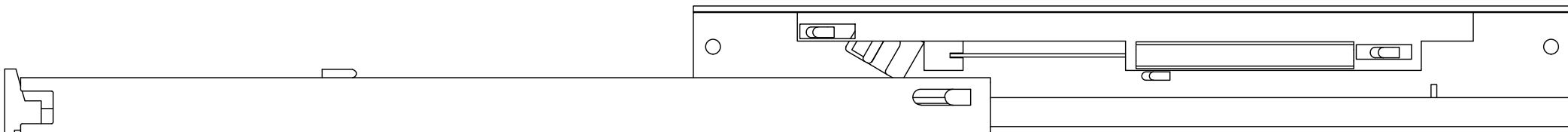
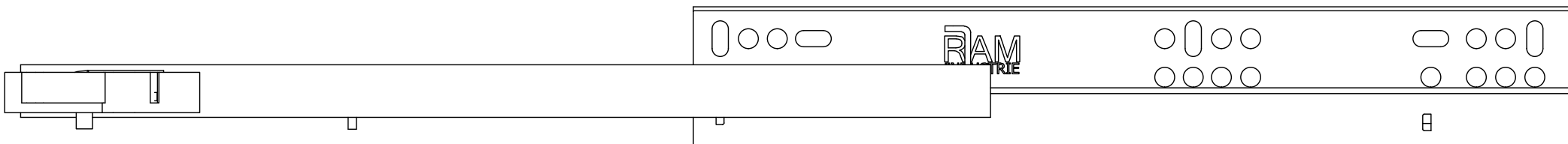
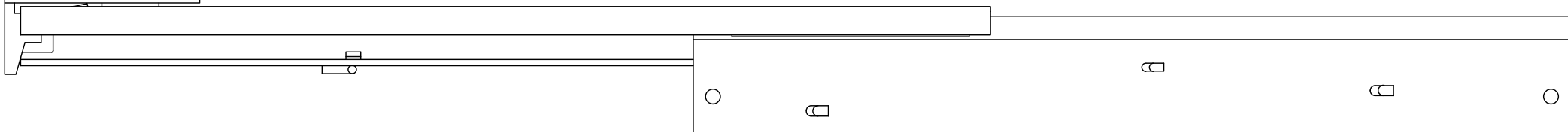
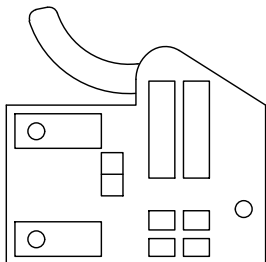
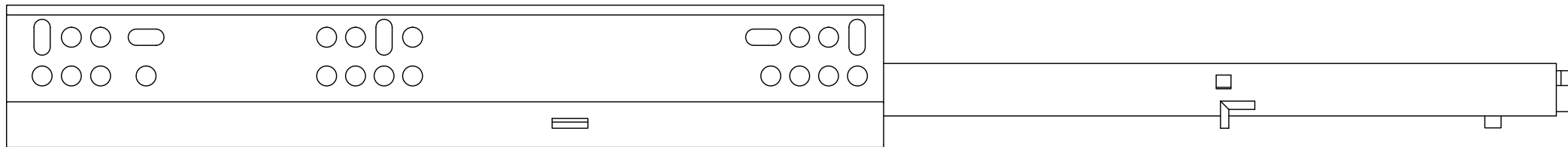


DESIGNED BY F.Dino	CHECKED AND APPROVED BY L. Paleari	REVISION	DATE 12/02/2016	CODE Q16300
RAM INDUSTRIE		GENERAL TOLLERANCE SS-ISO-2768-1M	UNIT mm	SCALE SHEET 1 of 3
		DESCRIPTION Single extension	MATERIAL Cold rolled steel	
		DEVICE Soft self closing	PAIR WEIGHT 0,952 Kg	04C

Property of RAM Industrie.
Without its written authorization the present drawing shall neither be used for construction anyway, communicated to third parties, nor reproduced.



DESIGNED BY F.Dino	CHECKED AND APPROVED BY L. Paleari	REVISION	DATE 12/02/2016	CODE Q16300
RAM INDUSTRIE		GENERAL TOLLERANCE SS-ISO-2768-1M	UNIT mm	SCALE SHEET 2 of 3
		DESCRIPTION Single extension	MATERIAL Cold rolled steel	
		DEVICE Soft self closing	PAIR WEIGHT 0,952 kg	04C
Property of RAM Industrie. Without its written authorization the present drawing shall neither be used for construction anyway, communicated to third parties, nor reproduced.				



DESIGNED BY F.Dino	CHECKED AND APPROVED BY L. Paleari	REVISION	DATE 12/02/2016	CODE Q16300
RAM INDUSTRIE		GENERAL TOLLERANCE SS-ISO-2768-1M	UNIT mm	SCALE 3 of 3
		DESCRIPTION Single extension	MATERIAL Cold rolled steel	
		DEVICE Soft self closing	PAIR WEIGHT 0,952 Kg	04C

Property of RAM Industrie.
Without its written authorization the present drawing shall neither be used for construction anyway, communicated to third parties, nor reproduced.