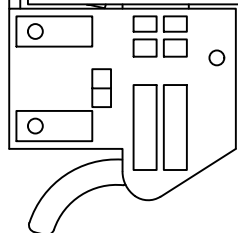
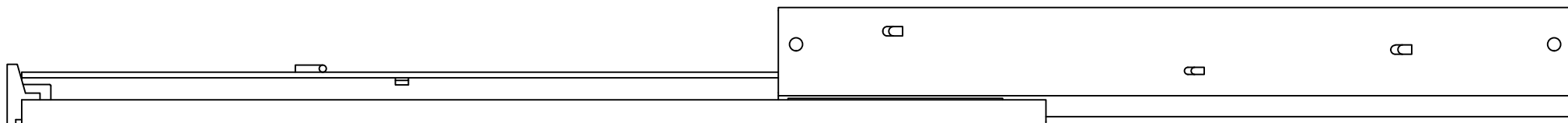
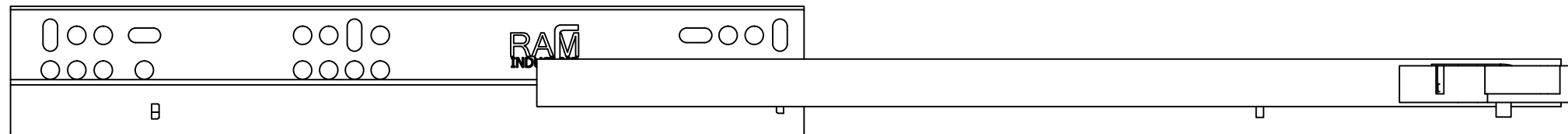
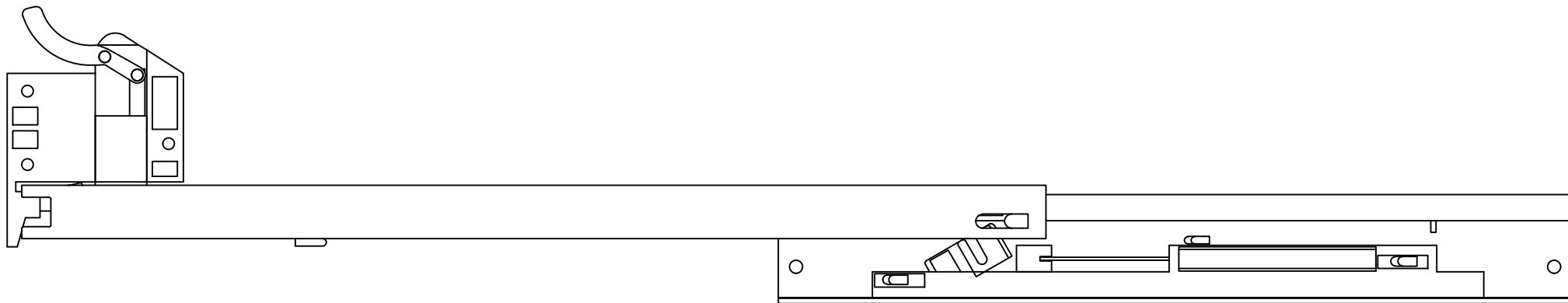
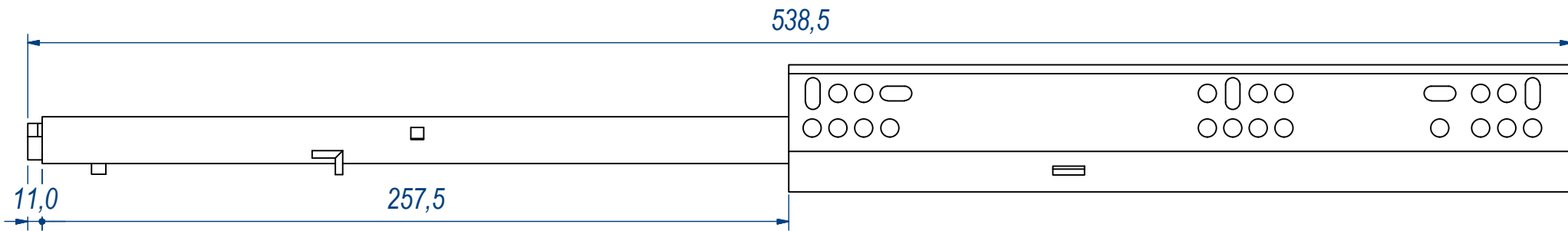


|                                      |                                       |                               |                    |                 |
|--------------------------------------|---------------------------------------|-------------------------------|--------------------|-----------------|
| DESIGNED BY<br>F.Dino                | CHECKED AND APPROVED BY<br>L. Paleari | REVISION                      | DATE<br>12/02/2016 | CODE<br>Q16350  |
| GENERAL TOLLERANCE<br>SS-ISO-2768-1M |                                       | UNIT<br>mm                    | SCALE              | SHEET<br>1 of 3 |
| DESCRIPTION<br>Single extension      |                                       | MATERIAL<br>Cold rolled steel |                    |                 |
| DEVICE<br>Soft self closing          |                                       | PAIR WEIGHT<br>0,53 Kg        | 04C                |                 |

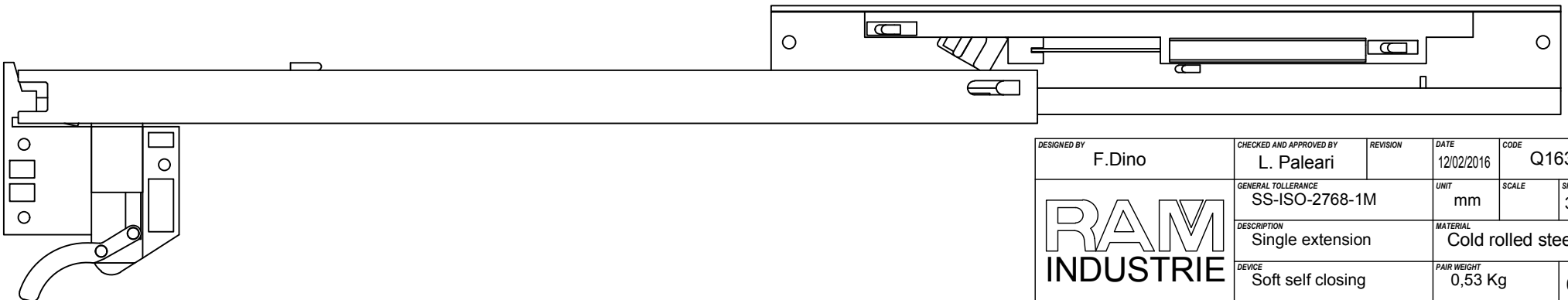
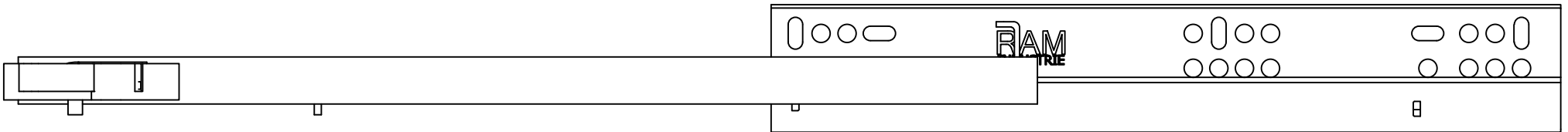
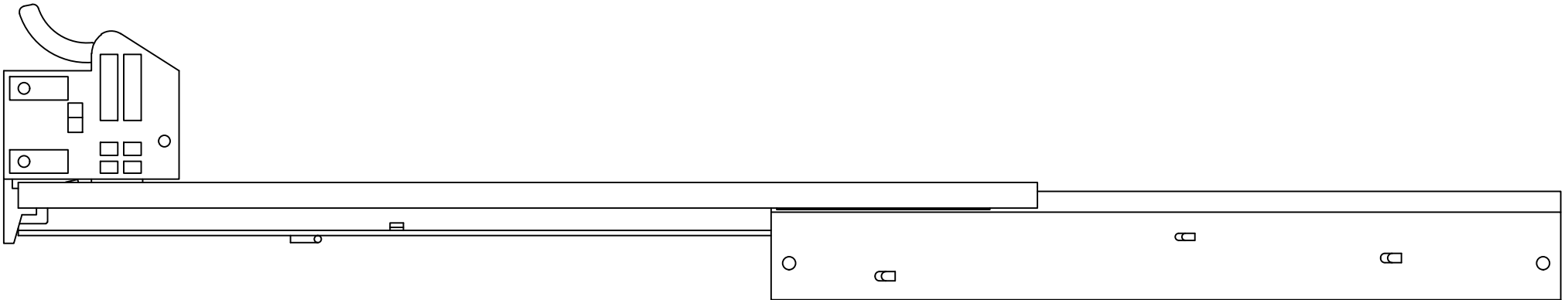
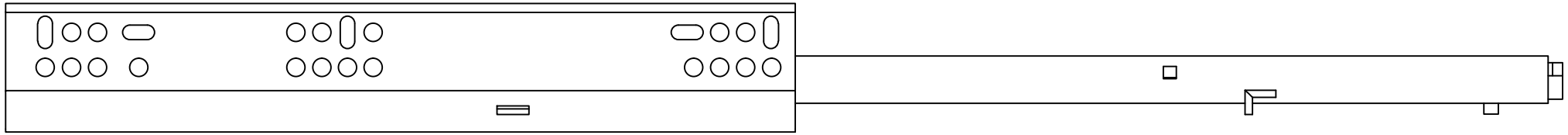
**RAM**  
INDUSTRIE



|                                      |                                       |          |                               |                          |
|--------------------------------------|---------------------------------------|----------|-------------------------------|--------------------------|
| DESIGNED BY<br>F.Dino                | CHECKED AND APPROVED BY<br>L. Paleari | REVISION | DATE<br>12/02/2016            | CODE<br>Q16350           |
| GENERAL TOLLERANCE<br>SS-ISO-2768-1M |                                       |          | UNIT<br>mm                    | SCALE<br>SHEET<br>2 of 3 |
| DESCRIPTION<br>Single extension      |                                       |          | MATERIAL<br>Cold rolled steel |                          |
| DEVICE<br>Soft self closing          |                                       |          | PAIR WEIGHT<br>0,53 Kg        | 04C                      |

**RAM**  
**INDUSTRIE**

Property of RAM Industrie.  
Without its written authorization the present drawing shall neither be used for construction anyway, communicated to third parties, nor reproduced.



|                                      |                                       |          |                               |                          |
|--------------------------------------|---------------------------------------|----------|-------------------------------|--------------------------|
| DESIGNED BY<br>F.Dino                | CHECKED AND APPROVED BY<br>L. Paleari | REVISION | DATE<br>12/02/2016            | CODE<br>Q16350           |
| GENERAL TOLLERANCE<br>SS-ISO-2768-1M |                                       |          | UNIT<br>mm                    | SCALE<br>SHEET<br>3 of 3 |
| DESCRIPTION<br>Single extension      |                                       |          | MATERIAL<br>Cold rolled steel |                          |
| DEVICE<br>Soft self closing          |                                       |          | PAIR WEIGHT<br>0,53 Kg        | 04C                      |

Property of RAM Industrie.  
Without its written authorization the present drawing shall neither be used for construction anyway, communicated to third parties, nor reproduced.