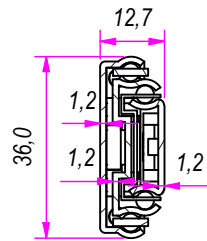
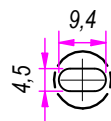


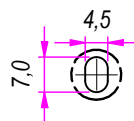
SEZ. A-A



B (1:1.5)



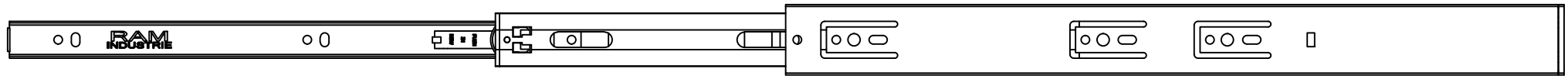
C (1:1.5)



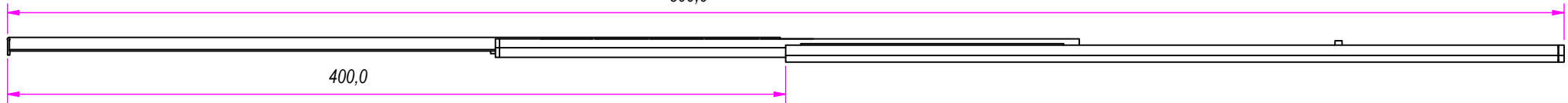
DESIGNED BY F. Dino	CHECKED AND APPROVED BY L. Paleari	GENERAL TOLLERANCE SS-ISO-2768-1M	DATE 01/08/2019	CODE S62400
		PACKAGING Carton 20 sets/Packed R+R	UNIT mm	SHEET 1 of 2
		DESCRIPTION Soft self closing	MATERIAL Cold rolled steel	T02
		PAIR WEIGHT 0,858 Kg		

REVISION HISTORY		
REV	DESCRIPTION	DATE
1a		01/08/2019

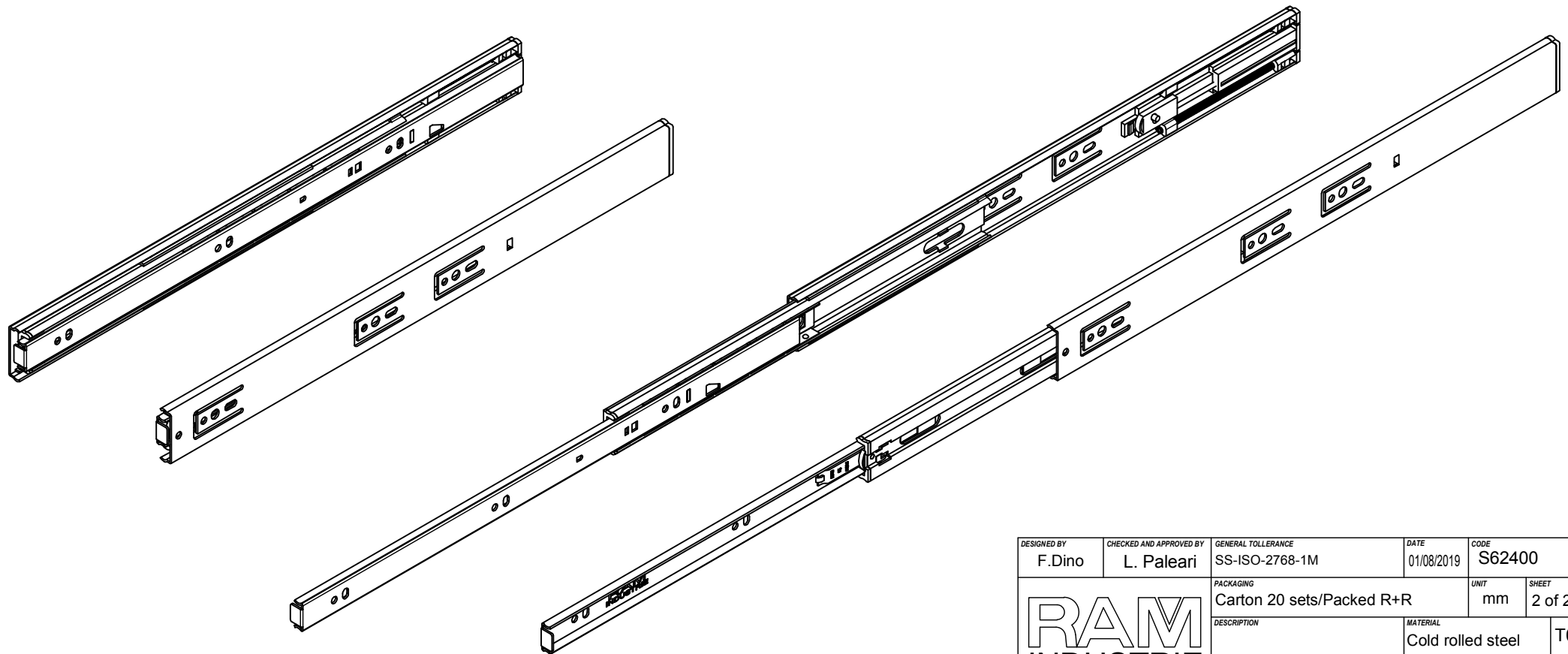
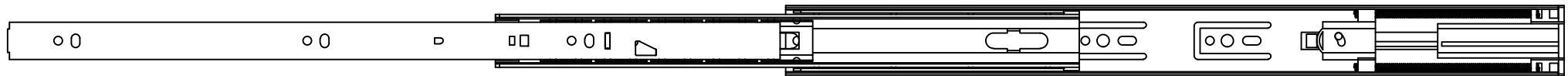
Property of RAM Industrie.
Without its written authorization the present drawing shall neither be used for construction anyway, communicated to third parties, nor reproduced.



800,0



400,0



DESIGNED BY F. Dino	CHECKED AND APPROVED BY L. Paleari	GENERAL TOLLERANCE SS-ISO-2768-1M	DATE 01/08/2019	CODE S62400
PACKAGING Carton 20 sets/Packed R+R			UNIT mm	SHEET 2 of 2
DESCRIPTION Soft self closing			MATERIAL Cold rolled steel	T02
PAIR WEIGHT 0,858 Kg				

RAM
INDUSTRIE

REVISION HISTORY		REV	DESCRIPTION	DATE
Guide per cassetti; guide telescopica	Coulisses à billes; coulisse télescopique	1a		01/08/2019
Drawer slide; telescopic ball bearing slide	Guías para cajones; guía teleópica			
Kugelführung; Teleskopschienen				

Property of RAM Industrie.
Without its written authorization the present drawing shall neither be used for construction anyway, communicated to third parties, nor reproduced.