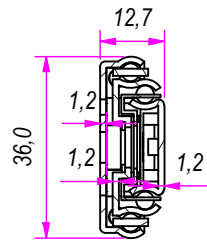
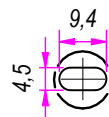


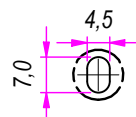
SEZ. A-A



B (1:1.5)

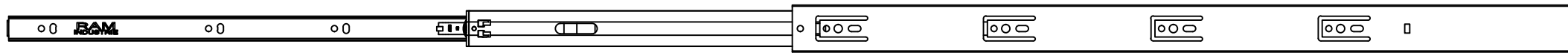


C (1:1.5)

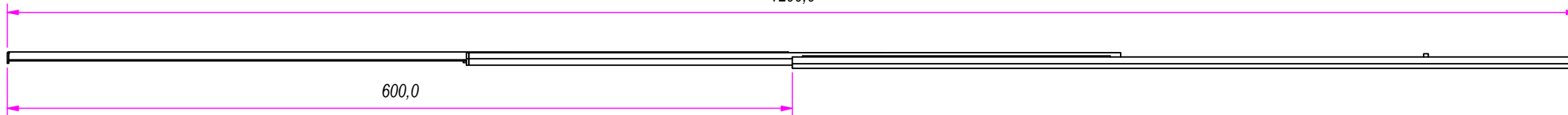


|  |                                       |   |                               |                 |
|--|---------------------------------------|---|-------------------------------|-----------------|
| DESIGNED BY<br>F. Dino   | CHECKED AND APPROVED BY<br>L. Paleari | GENERAL TOLERANCE<br>SS-ISO-2768-1M                         | DATE<br>01/08/2019            | CODE<br>S62600  |
|  |                                       | PACKAGING<br>Carton 20 sets/Packed R+R                      | UNIT<br>mm                    | SHEET<br>1 of 2 |
|  |                                       | DESCRIPTION<br>Soft self closing                            | MATERIAL<br>Cold rolled steel | T02             |
| Guide per cassetti; guide telescopiche<br>Coulisses à billes; coulisse télescopique<br>Drawer slide; telescopic ball bearing slide<br>Guías para cajones; guía teleópica<br>Kugelführung; Teleskopschienen |                                       | REVISION HISTORY<br>DESCRIPTION<br>DATE<br>1a<br>01/08/2019 |                               |                 |
|  |                                       | PAIR WEIGHT<br>1,336 Kg                                     |                               |                 |

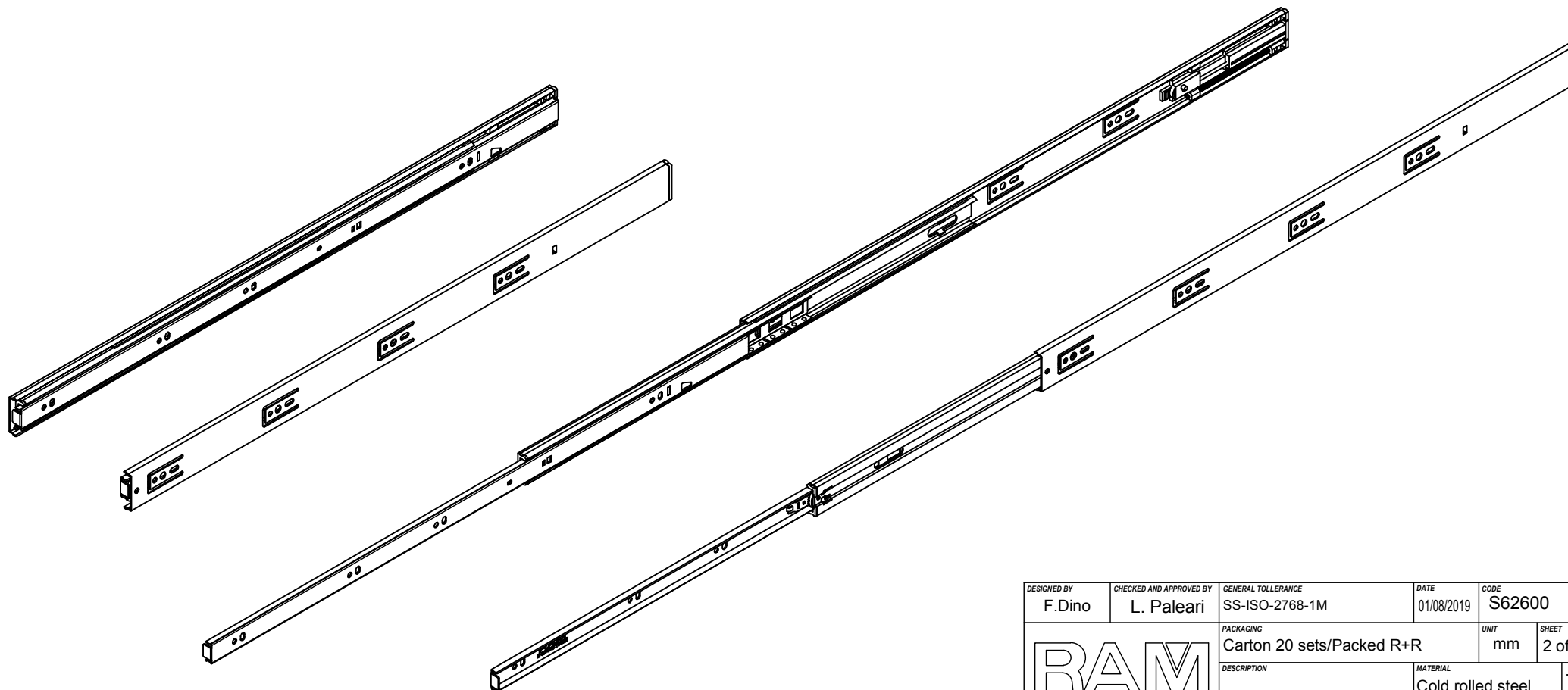
Property of RAM Industrie.  
Without its written authorization the present drawing shall neither be used for construction anyway, communicated to third parties, nor reproduced.



1200,0



600,0



|  |                                       |                                     |                               |                 |
|--|---------------------------------------|-------------------------------------|-------------------------------|-----------------|
| DESIGNED BY<br>F. Dino                 | CHECKED AND APPROVED BY<br>L. Paleari | GENERAL TOLERANCE<br>SS-ISO-2768-1M | DATE<br>01/08/2019            | CODE<br>S62600  |
| PACKAGING<br>Carton 20 sets/Packed R+R |                                       |                                     | UNIT<br>mm                    | SHEET<br>2 of 2 |
| DESCRIPTION<br>Soft self closing       |                                       |                                     | MATERIAL<br>Cold rolled steel | T02             |
| PAIR WEIGHT<br>1,336 Kg                |                                       |                                     |                               |                 |

**RAM**  
INDUSTRIE

| REVISION HISTORY                            |   | REV | DESCRIPTION | DATE       |
|---|---|-----|-------------|------------|
| Guide per cassetti; guide telescopiche      | Coulisses à billes; coulisse télescopique | 1a  |             | 01/08/2019 |
| Drawer slide; telescopic ball bearing slide | Guías para cajones; guía teleópica        |     |             |            |
| Kugelführung; Teleskopschienen              |   |     |             |            |

Property of RAM Industrie.  
Without its written authorization the present drawing shall neither be used for construction anyway, communicated to third parties, nor reproduced.