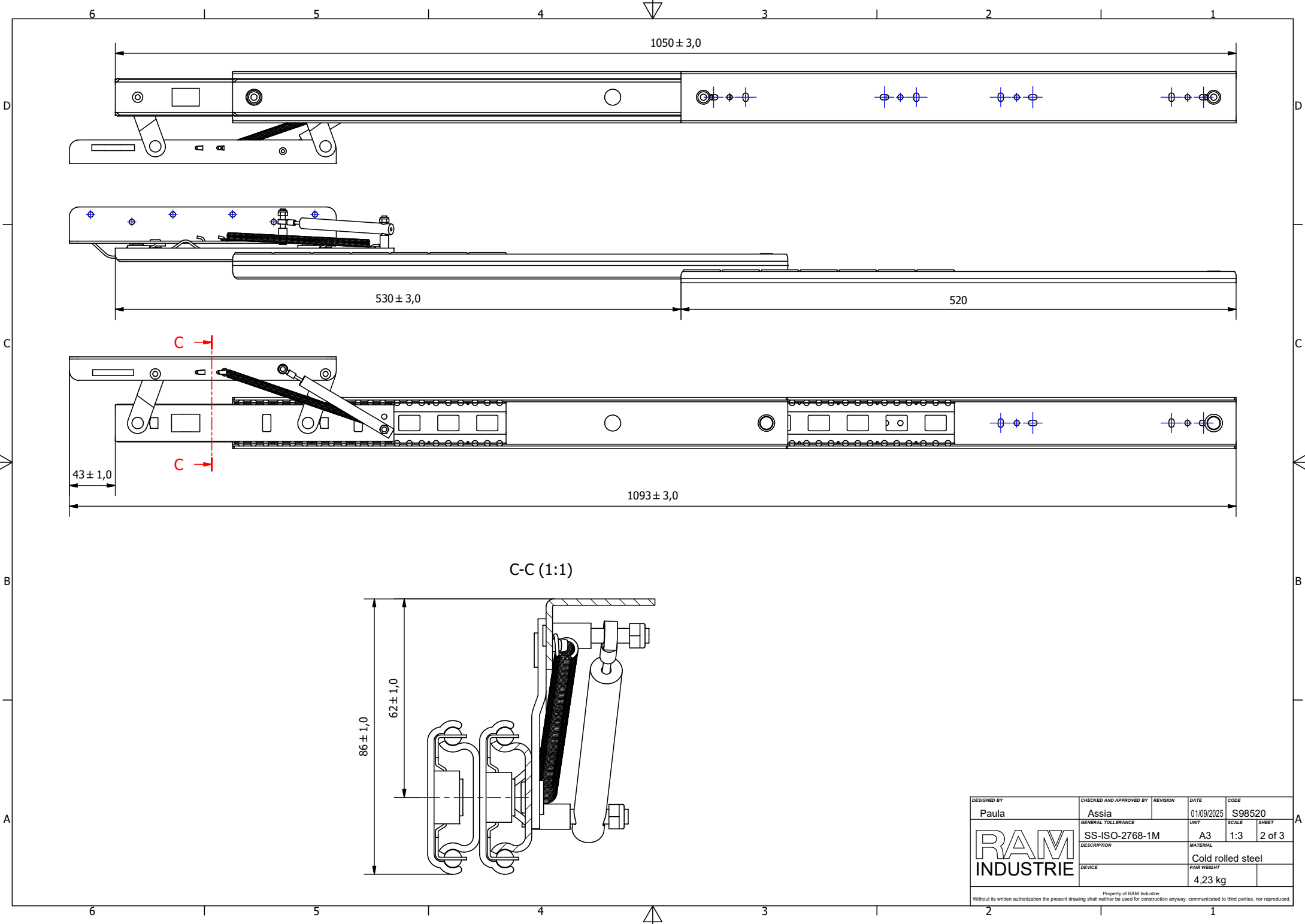


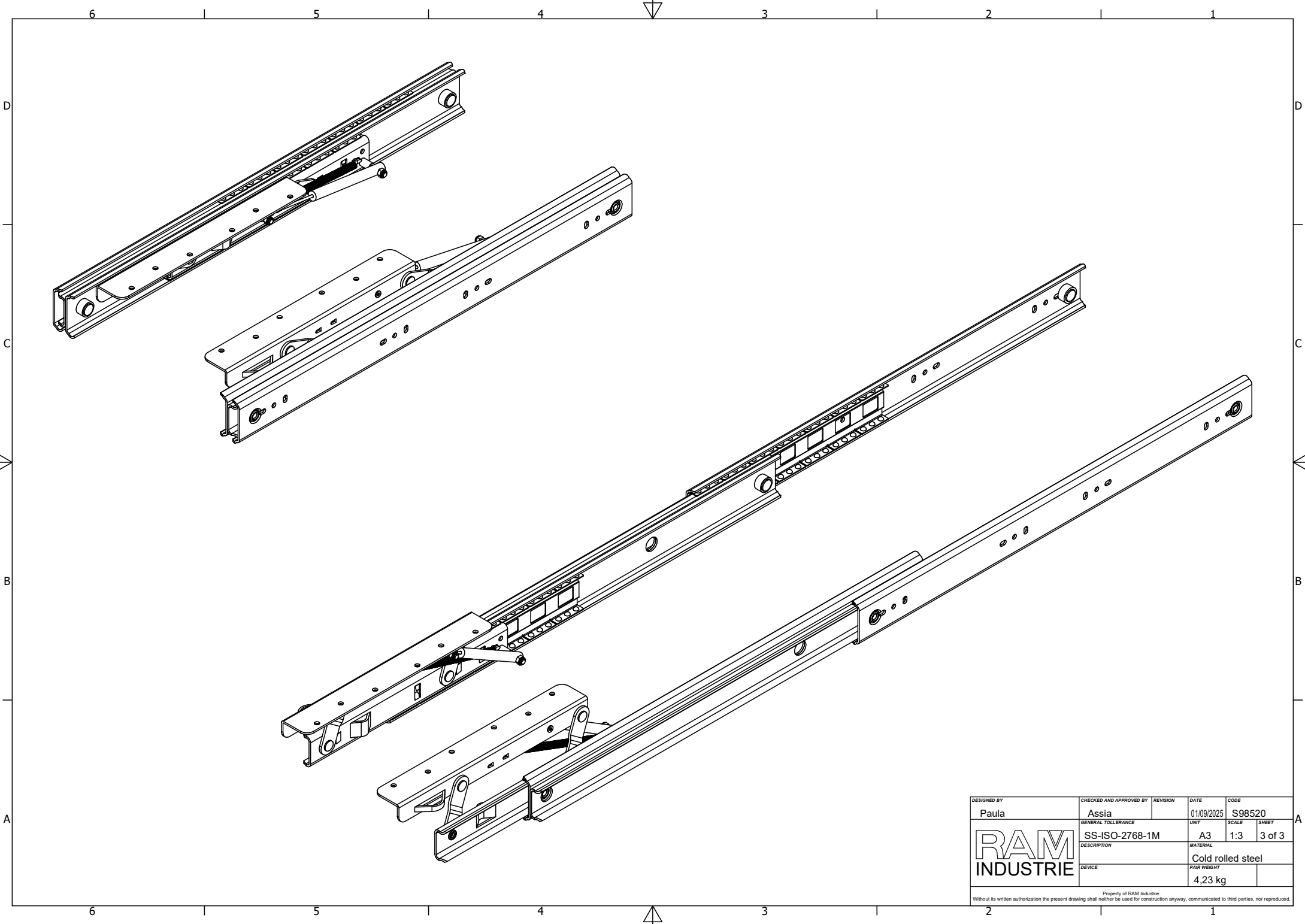
| | | | | |
|--------------------|-------------------------|-------------|------------|--------|
| DESIGNED BY | CHECKED AND APPROVED BY | REVISION | DATE | CODE |
| Paula | Assia | | 01/09/2025 | S98520 |
| GENERAL TOLLERANCE | UNIT | SCALE | SHEET | |
| SS-ISO-2768-1M | A3 | 1:2 | 1 of 3 | |
| DESCRIPTION | MATERIAL | PAIR WEIGHT | | |
| | Cold rolled steel | 4,23 kg | | |
| DE VICE | | | | |

Without its written authorization the present drawing shall neither be used for construction anyway, communicated to third parties, nor reproduced.



| | | | | |
|--------------------|-------------------------|-------------------|------------|--------|
| DESIGNED BY | CHECKED AND APPROVED BY | REVISION | DATE | CODE |
| Paula | Assia | | 01/09/2025 | S98520 |
| GENERAL TOLLERENCE | | UNIT | SCALE | SHEET |
| SS-ISO-2768-1M | | A3 | 1:3 | 2 of 3 |
| DESCRIPTION | | MATERIAL | | |
| | | Cold rolled steel | | |
| DE VICE | | PAIR WEIGHT | | |
| | | 4,23 kg | | |

Property of RAM Industrie.
Without its written authorization the present drawing shall neither be used for construction anyway, communicated to third parties, nor reproduced.



| | | | | |
|--------------------|-------------------------|----------|------------|--------|
| DESIGNED BY | CHECKED AND APPROVED BY | REVISION | DATE | CODE |
| Paula | Assia | | 01/09/2025 | S98520 |
| GENERAL TOLLERANCE | UNIT | SCALE | SHEET | |
| SS-ISO-2768-1M | A3 | 1:3 | 3 of 3 | |
| DESCRIPTION | MATERIAL | | | |
| | Cold rolled steel | | | |
| DE VICE | PAIR WEIGHT | | | |
| | 4,23 kg | | | |

Without its written authorization the present drawing shall neither be used for construction anyway, communicated to third parties, nor reproduced.