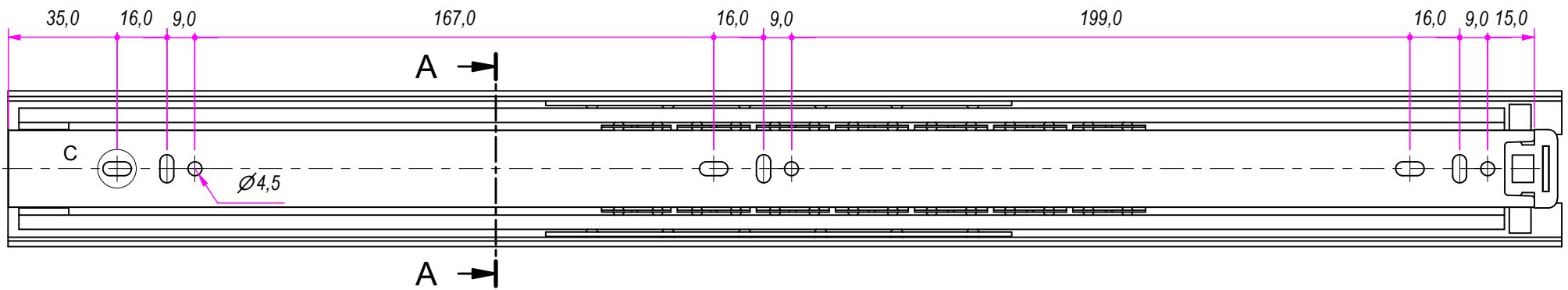


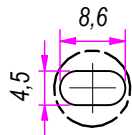
1a

500,0

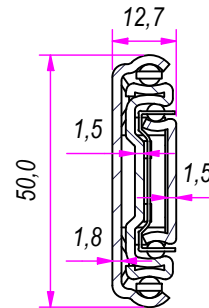
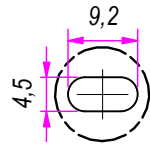


SEZ. A-A

B (1:1)



C (1:1)

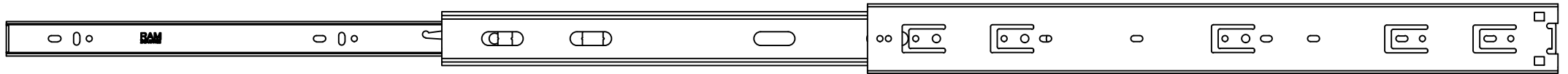


REVISION HISTORY			
REV	DESCRIPTION	APPROVED BY	DATE
1a	Added hole	F.Dino	04/12/2019

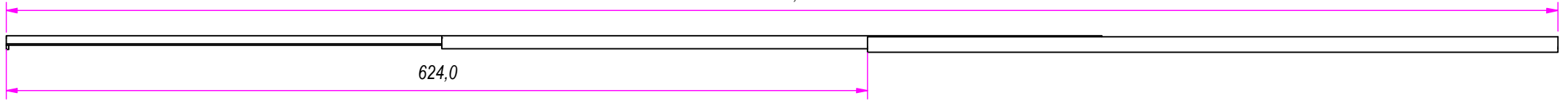
DESIGNED BY F.Dino	CHECKED AND APPROVED BY L. Paleari	GENERAL TOLERANCE SS-ISO-2768-1M	DATE 03/10/2016	SHEET 1 of 2	CODE SE51500
PACKAGING Carton 10 sets/Packed R+R			CYCLES TEST	SALT SPRAY TEST	L/O LABEL ✓
DESCRIPTION Extra travel			MATERIAL Cold rolled steel		
DEVICE			PAIR WEIGHT 1,98 Kg	UNIT mm	02C

RAM
INDUSTRIE

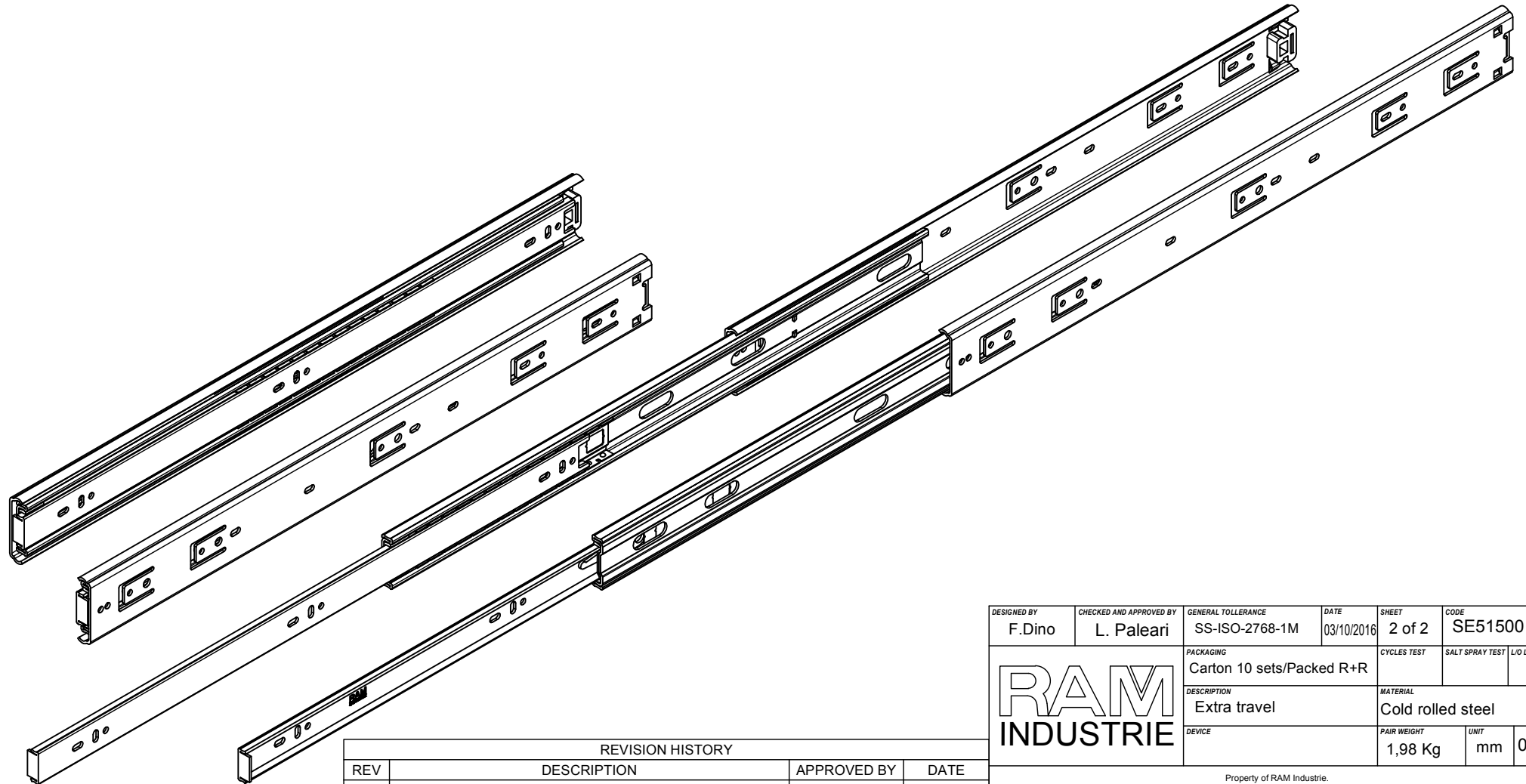
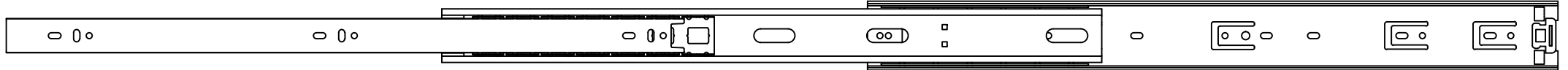
Property of RAM Industrie.
Without its written authorization the present drawing shall neither be used for construction anyway, communicated to third parties, nor reproduced.



1124,0



624,0



REVISION HISTORY			
REV	DESCRIPTION	APPROVED BY	DATE
1a	Added hole	F.Dino	04/12/2019

DESIGNED BY F.Dino	CHECKED AND APPROVED BY L. Paleari	GENERAL TOLLERANCE SS-ISO-2768-1M	DATE 03/10/2016	SHEET 2 of 2	CODE SE51500
PACKAGING Carton 10 sets/Packed R+R			CYCLES TEST	SALT SPRAY TEST	L/O LABEL ✓
DESCRIPTION Extra travel			MATERIAL Cold rolled steel		
DEVICE			PAIR WEIGHT 1,98 Kg	UNIT mm	02C

RAM
INDUSTRIE

Property of RAM Industrie.
Without its written authorization the present drawing shall neither be used for construction anyway, communicated to third parties, nor reproduced.