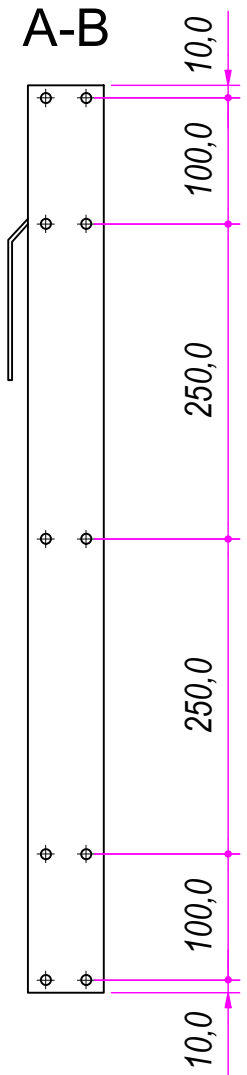
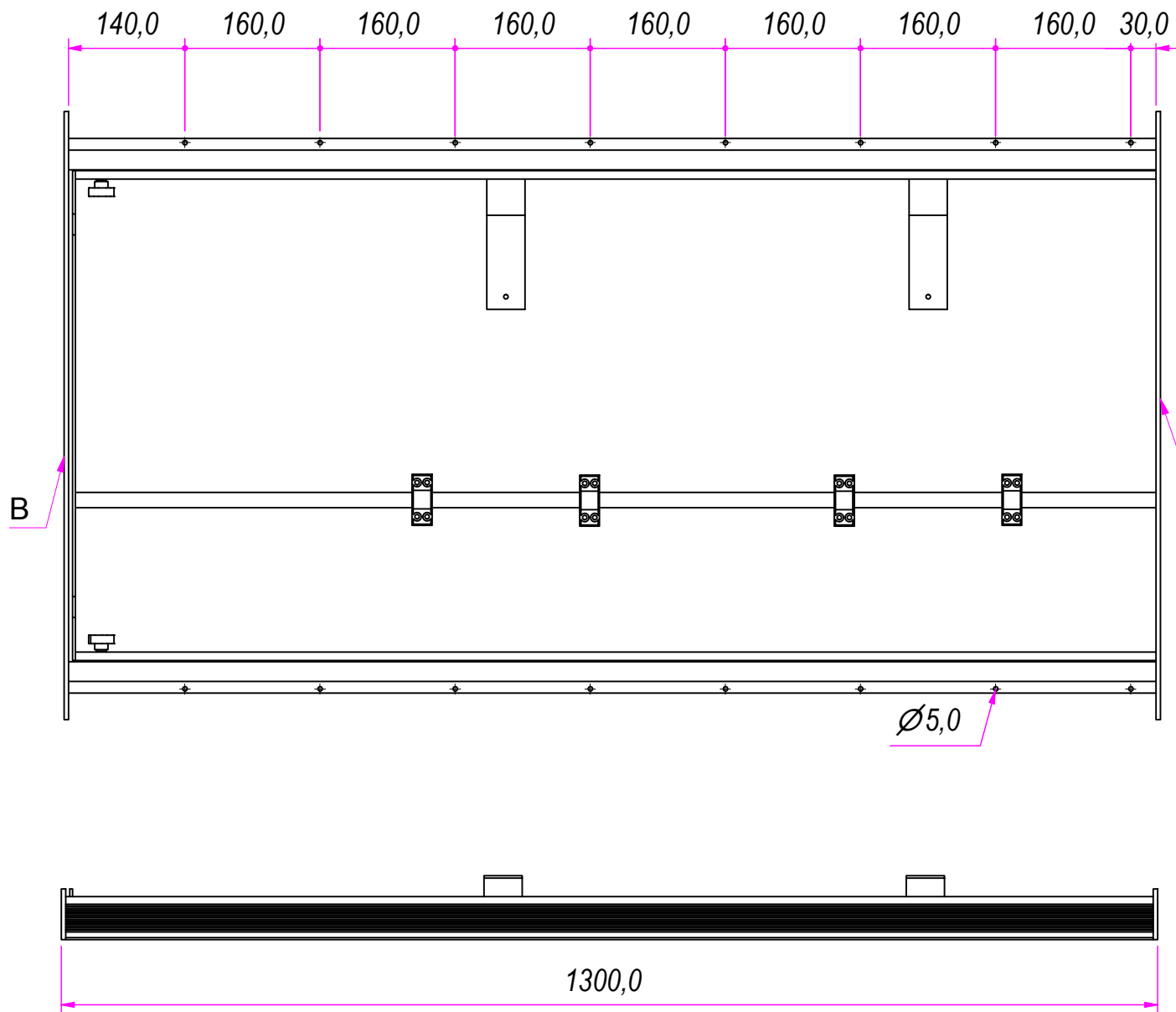


| REVISION HISTORY |             |            |
|------------------|-------------|------------|
| REV              | DESCRIPTION | DATE       |
| 1a               |             | 10/10/2018 |

|                                 |                                       |   |                                    |                  |
|---------------------------------|---------------------------------------|---|------------------------------------|------------------|
| DESIGNED BY<br>F.Dino           | CHECKED AND APPROVED BY<br>L. Paleari | GENERAL TOLLERANCE<br>SS-ISO-2768-1M    | DATE<br>09/10/2018                 | CODE<br>T621300A |
| PACKAGING<br>Carton 1 piece     |                                       |   | UNIT<br>mm                         | SHEET<br>1 of 4  |
| DESCRIPTION<br>Single extension |                                       | MATERIAL<br>Anodise aluminum alloy 6060 |                                    |                  |
| DEVICE                          |                                       |   | PAIR WEIGHT WITH CARTON<br>10,5 Kg | 021              |

**RAM**  
**INDUSTRIE**

Property of RAM Industrie.  
Without its written authorization the present drawing shall neither be used for construction anyway, communicated to third parties, nor reproduced.

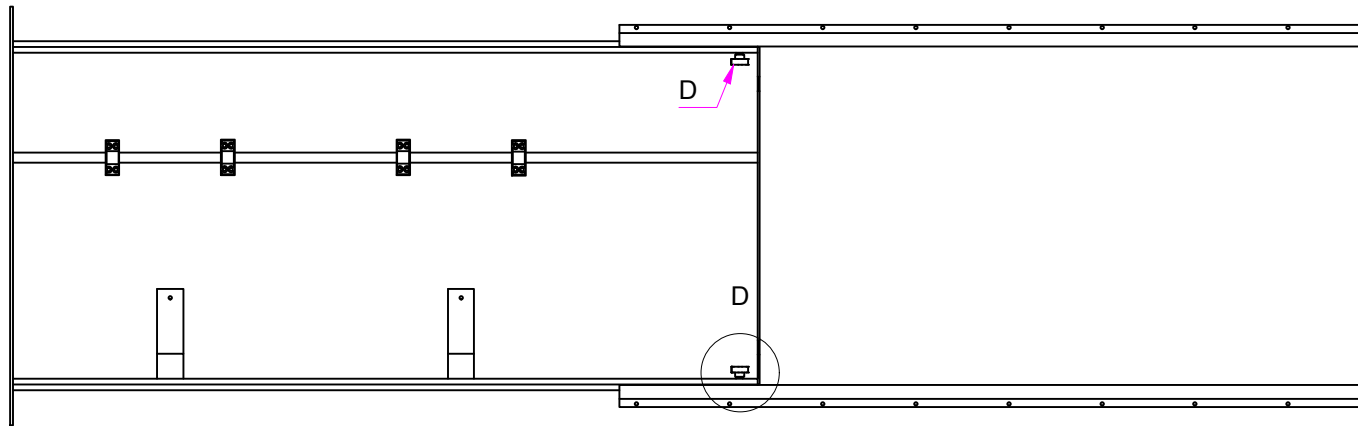


|                                 |                                       |   |                                    |                  |
|---------------------------------|---------------------------------------|---|------------------------------------|------------------|
| DESIGNED BY<br>F.Dino           | CHECKED AND APPROVED BY<br>L. Paleari | GENERAL TOLERANCE<br>SS-ISO-2768-1M     | DATE<br>09/10/2018                 | CODE<br>T621300A |
| PACKAGING<br>Carton 1 piece     |                                       |   | UNIT<br>mm                         | SHEET<br>2 of 4  |
| DESCRIPTION<br>Single extension |                                       | MATERIAL<br>Anodise aluminum alloy 6060 |                                    |                  |
| DEVICE                          |                                       |   | PAIR WEIGHT WITH CARTON<br>10,5 Kg | 021              |

| REVISION HISTORY |             |            |
|------------------|-------------|------------|
| REV              | DESCRIPTION | DATE       |
| 1a               |             | 10/10/2018 |

**RAM**  
**INDUSTRIE**

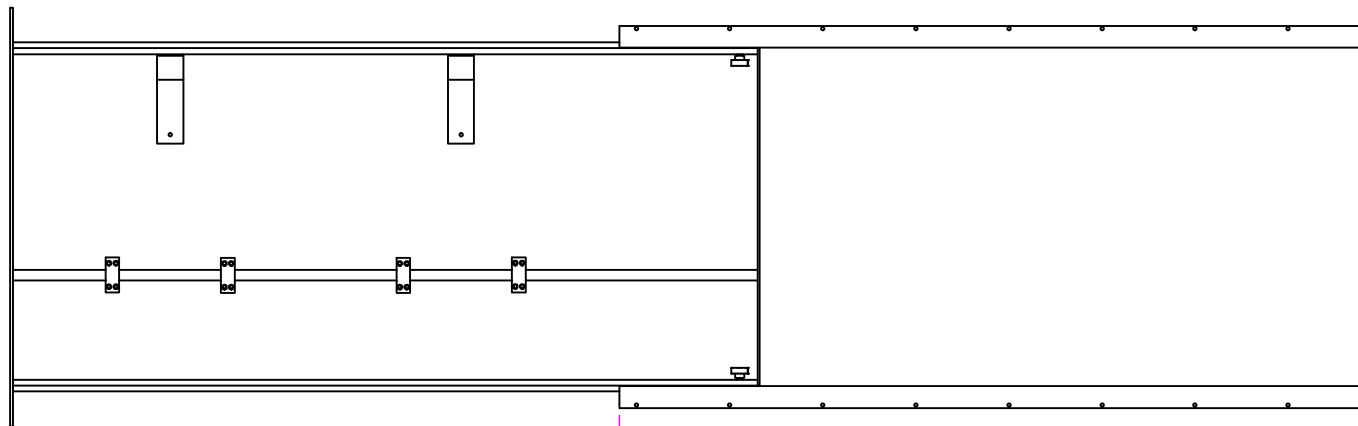
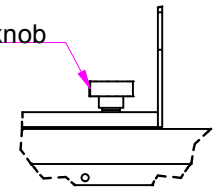
Property of RAM Industrie.  
Without its written authorization the present drawing shall neither be used for construction anyway, communicated to third parties, nor reproduced.



2340,0

D (1 : 5)

Locking screw knob



1045,0

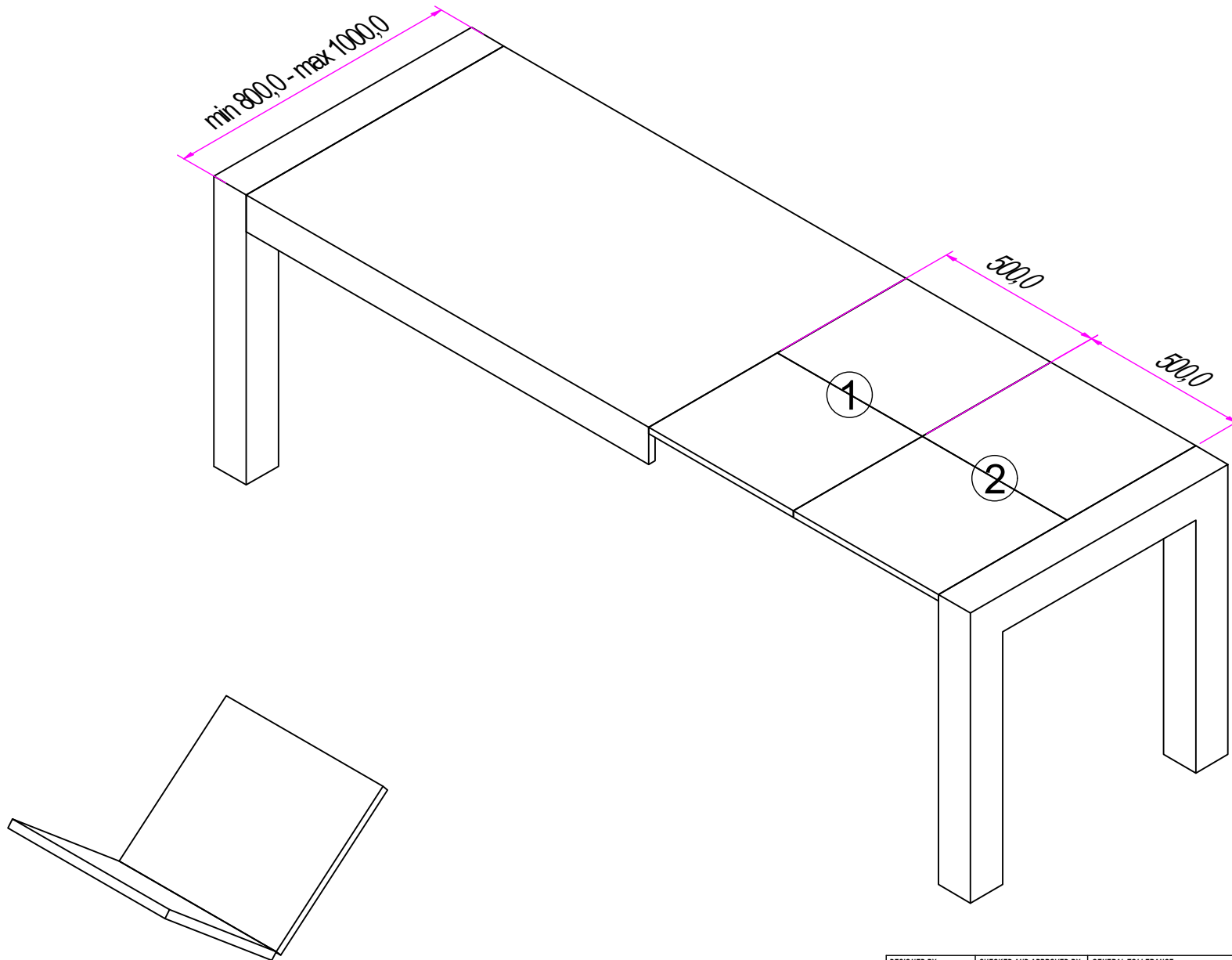
| REVISION HISTORY |             |            |
|------------------|-------------|------------|
| REV              | DESCRIPTION | DATE       |
| 1a               |             | 10/10/2018 |


|                                 |                                       |   |                                    |                  |
|---------------------------------|---------------------------------------|---|------------------------------------|------------------|
| DESIGNED BY<br>F.Dino           | CHECKED AND APPROVED BY<br>L. Paleari | GENERAL TOLLERANCE<br>SS-ISO-2768-1M    | DATE<br>09/10/2018                 | CODE<br>T621300A |
| PACKAGING<br>Carton 1 piece     |                                       |   | UNIT<br>mm                         | SHEET<br>3 of 4  |
| DESCRIPTION<br>Single extension |                                       | MATERIAL<br>Anodise aluminum alloy 6060 |                                    |                  |
| DEVICE                          |                                       |   | PAIR WEIGHT WITH CARTON<br>10,5 Kg | 021              |

**RAM**  
**INDUSTRIE**

Property of RAM Industrie.

Without its written authorization the present drawing shall neither be used for construction anyway, communicated to third parties, nor reproduced.



|   |                                       |   |                    |                  |
|---|---------------------------------------|---|--------------------|------------------|
| DESIGNED BY<br>F.Dino   | CHECKED AND APPROVED BY<br>L. Paleari | GENERAL TOLLERANCE<br>SS-ISO-2768-1M    | DATE<br>09/10/2018 | CODE<br>T621300A |
|  | PACKAGING<br>Carton 1 piece           | UNIT<br>mm                              | SHEET<br>4 of 4    |                  |
|   | DESCRIPTION<br>Single extension       | MATERIAL<br>Anodise aluminum alloy 6060 |                    |                  |
|   | DEVICE                                | PAIR WEIGHT WITH CARTON<br>10,5 Kg      | 021                |                  |

Property of RAM Industrie.  
Without its written authorization the present drawing shall neither be used for construction anyway, communicated to third parties, nor reproduced.